



Local and Affiliate Designation for Members - How it Works!

What is a Local Chapter?

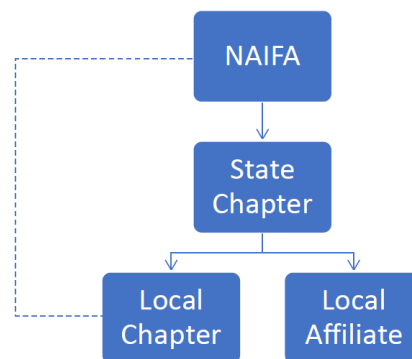
A Local Chapter provides members in population centers large enough to support a formal Chapter structure with access to frequent and structured programming. The minimum size of a Local Chapter is 100 members. The Local Chapter is separately incorporated, maintains association management and governance, holds meetings for professional development and education, social/networking, and grassroots political advocacy at least four times per year. A Local Chapter is accountable to both its State Chapter and NAIFA.

What is an Affiliate?

To deliver a consistent and quality member experience throughout the state, members in local Affiliate areas could be organized under one of the following models, which are based on the size of the community, or alternative models can be developed, based on local needs and preferences. Affiliates do not have formal boards and formal leadership positions like a Treasurer and President. Affiliates are also not separately incorporated and are considered an operating arm of the State Chapter.

Smaller Local Affiliate: Allows members in smaller population centers to organize under the NAIFA banner as an Affiliate group to network and share ideas and offer programming. A smaller Affiliate group should have a minimum of three volunteer leaders willing to serve on the State Chapter's Membership, Advocacy and Programs teams.

Larger Local Affiliate: Provides members in larger population centers with access to more frequent and structured programming. Recommended size of a larger Affiliate group is 50+ members. A larger Affiliate group should have a minimum of five volunteer leaders. Four of the leaders would serve on statewide Membership, Advocacy (both PIC & PAC) and Programs teams, with the fifth volunteer serving as the Affiliate leader.



How do members become a part of a Local Chapter or Affiliate?

When a member joins NAIFA, there will not be an option to join a Local Chapter or Affiliate. Once a member joins, a NAIFA staff member will manually look up their zip code from the address they provided. If their zip code is assigned to a Local Chapter or Affiliate, they will be added to the appropriate group.

What if a member wants to choose their Local Chapter or Affiliate?

If a member would like to be a part of a Local Chapter or Affiliate (or a different Local Chapter or Affiliate than what they are assigned to), the member must contact NAIFA and request this change be made. The member may call 877-866-2432 or email info@naifa.org.

Where can I get more information?

The [Chapter Playbook](#) includes additional details on Local Chapters and Affiliates, including position descriptions. If you have any further questions or concerns, please reach out to Zach Levin, Chapter Services Manager, at zlevin@naifa.org.