

Spring 2021:
SVCTE Reopening

The Plan to return SVCTE
students to in person
instruction

● March 9, 2021

Alecia Myers-Kelley
Director of Programs



MetroED

Metropolitan Education District

Topics for Today

- Attendance options
- Schedule with High School
- Transportation
- Regular and accurate student self screening & Illness
- Number of students per day/Number of students per class
- Actions for a positive case
- Certifications

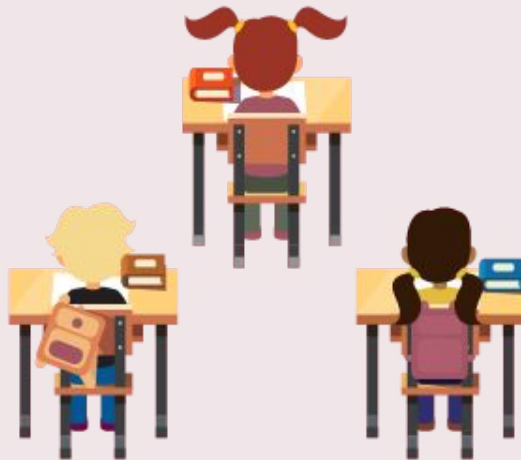
Phased Reopening



Priority for Certain Student Groups

Younger students
Students in transitional years
Students with specific needs

Rotating Schedules



Fewer Students in Classrooms Together

Full-day alternating schedules
or half-day schedules

Voluntary Attendance



Options for Families

Some may choose to send students back to school while others continue distance learning

Attendance Options

State Legislation for Local School Districts

SB 98 provides that distance learning may be offered under either of the following circumstances:



- On an LEA or schoolwide level as a result of an order or guidance from a state public health officer or a local public health officer; or
- For students who are medically fragile or would be put at risk by in-person instruction, or who are self-quarantining because of exposure to COVID -19
- SB 98 (Education Code § 43504) contains a statement that LEAs “shall offer in-person instruction to the greatest extent possible.”

Quality instruction and a commitment to equity for all students continues to be a focus for SVCTE educational programs. We know that the needs of our students and families vary, which is why we have provided a variety of instructional program models for the 2020-21 school year.

Blended Learning Schedule for students In Person and students who remain in Distance Learning



SVCTE Blended Learning Schedule

Time	Monday	Tuesday	Wednesday	Thursday	Friday
7:30am-9:30am	30 Minute Synchronous Lesson Delivery for Students not receiving In Person Instruction				Teacher Preparation/Professional Development
	SCUSD, ESUHSD YELLOW	CUHSD, LGS, Charter, MUSD	ESUHSD WHITE	SJUSD	
12:30pm-3:30pm	30 Minute Synchronous Lesson Delivery for Students not receiving In Person Instruction				Teacher Preparation/Professional Development
	SCUSD, ESUHSD YELLOW	CUHSD, LGS, Charter, MUSD	ESUHSD WHITE	SJUSD	

Schedule with High School

All High Schools have been aware of our blended schedule for the reopening since July 2020. We will continue to work with schools as we always have to provide the best possible access to both programs.



San José
Unified
School District



Silicon Valley
Career Technical Education

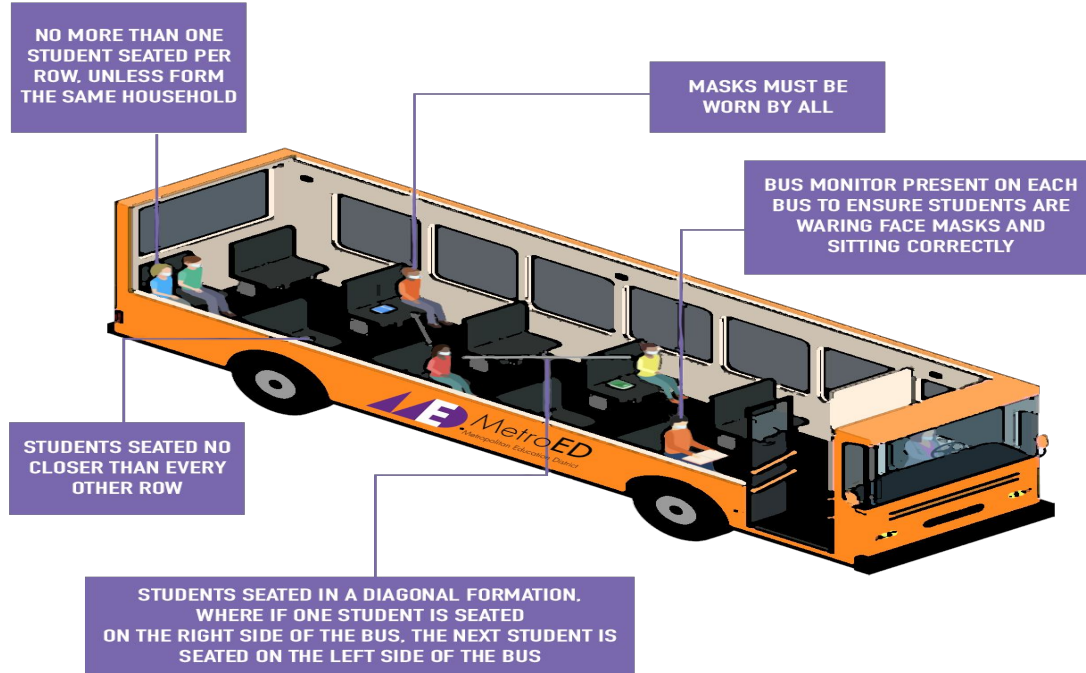
Transportation

- Students may drive themselves



Transportation

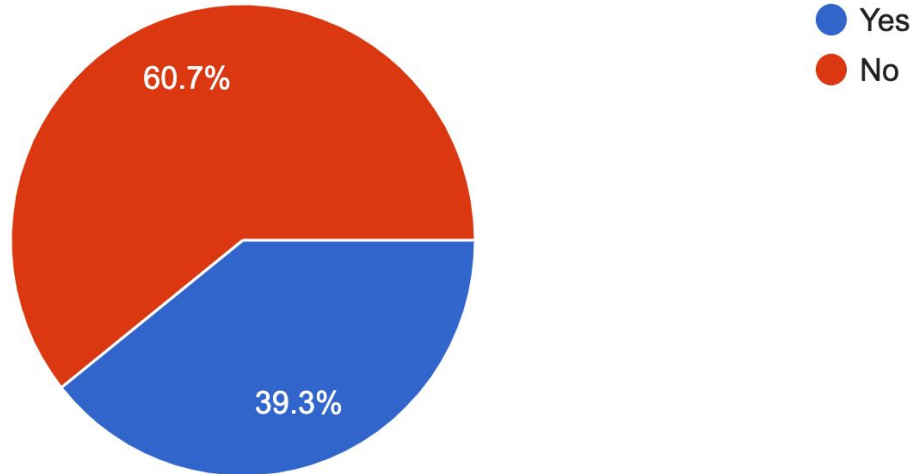
- Students may ride the bus provided Student pick up and drop off at home high school



Survey Results to Date of Students Planning to Ride the bus

Will your student ride the SVCTE bus?

336 responses



Dropping Off Students

In between the 100 and 200 Buildings On the Left side

- Look for “Student Drop Off” signs
- Drive 5 MPH or less
- Stop only in designated areas briefly
- Be mindful of traffic moving on the right
- Do not exit the car for any reason



Plan for SVCTE in person instruction:

All school staff and students K thru Adult are required to wear face coverings.



- Physical distancing 6 feet and other adaptations in lab and classroom settings
- Hand hygiene
- Regular COVID-19 testing and dedicated contact tracing
- Stay home if feeling ill
- Students and guardians ensure self screening to attend each day

Plan for Students attending SVCTE in person instruction: Signs Posted



FACE COVERING REQUIRED AT ALL TIMES.

STAY SAFE

-  Maintain social distancing
of at least 6 feet apart
-  Cover your mouth and nose
with a face covering
-  Wash your hands frequently
-  Cough or sneeze into a tissue
or your elbow

PLEASE PRACTICE SOCIAL DISTANCING



6 ft

Pre-Arrival Daily Health Screening

Complete before boarding a bus and arriving on campus

SCHOOL Info
Your school. Your connection.
Covid-19 Screener
APP



MetroED Health Screening

Daily Health Screening Questions

Ask These Questions

A person who answers "Yes" to any one of these questions must not be allowed to enter campus.

1. Within the last 10 days have you been diagnosed with COVID-19 or had a test confirming you have the virus?

✓ Yes – STAY HOME and seek medical care.

2. Within the past 14 days, have you had close contact with someone who has been in isolation for COVID-19 or had a test confirming they have the virus? Close contact is less than 6 feet for 15 minutes or more.

✓ Yes – STAY HOME and seek medical care and testing.

3. Have you had any one or more of these symptoms today or within the past 3 days?

Fever or chills

Loss of taste or smell

Cough

Shortness of breath or difficulty breathing

✓ Yes – STAY HOME and seek medical care and testing.

4. Have you had any one or more of these symptoms today or within the past 3 days and that are new or not explained by another reason?

Fatigue

Sore throat

Muscle or body aches

Nausea, vomiting, or diarrhea

Headache

✓ Yes – STAY HOME and seek medical care and testing.

Regular and Accurate Self Screening

Teachers will check the students' cell phone before they enter class to ensure self screening is completed each day

Receive a daily-stamped, digital pass after answering no to three-short questions.



Or, a stop message if answering yes to any current symptoms, positive test or COVID-19 exposures within the past 10-days.

Regular and Accurate Self Screening

Students who do not have a picture of the date and time submitted and a Check Mark surrounded by green will not be permitted to class or on the bus.



Submitted at

Mar 6, 2021

2:12 PM

Thank You. You may proceed to campus.



Submitted at

Mar 8, 2021

1:58 PM

Do Not Come to Campus. Please contact your healthcare provider and someone from our team will be in touch.

For COVID-19 questions or concerns, please email covidliasion@metroed.net or call (408) 723-4245.

For COVID-19 questions or concerns, please email covidliasion@metroed.net or call (408) 723-4245.

Student Sickness

- Students feeling ill while on campus can wait in the Care Room until pick up
- Parents/Guardians will be informed of ill student
- Student must be picked up within 30 minutes of parent/guardian notification



Student Absences

Please report your student's absence, illness, positive case, or if they have been a close contact of a COVID-19 positive person immediately to the school at 408-723-4260

One or more symptom not related to another issue (for example, allergies)

- Fever or chills
- Cough
- Shortness of breath or difficulty breathing
- Fatigue
- Muscle or body aches
- Headache
- New loss of taste or smell
- Sore throat
- Congestion or runny nose
- Nausea or vomiting
- Diarrhea



A close contact is anyone who was within 6 feet of an infected person for a total of at least 15 minutes over a 24 hour period.

COVID-19 Testing

Students displaying one or more symptom of COVID-19 will be asked to stay home, get tested and share the test results with the school

COVID-19 TESTING

for Symptomatic Students

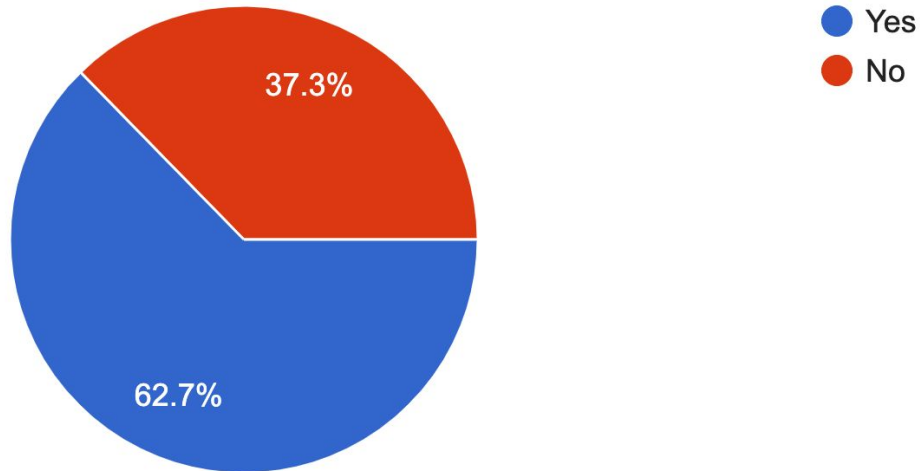


List of free COVID testing sites: www.metroed.net/covid19-parents
(look for a site that accepts individuals with symptoms)

Survey Results to Date of Students Planning to Return to In Person

Will your student attend in-person classes beginning on Monday, March 22nd, 2021?

536 responses



Number of Students Per Day & Class

- Students will attend their course on their assigned one day per week in a stable group
- No more than 14 students will be in a stable group (cohort)
- The average stable group size is 6 students at SVCTE

Possible Number of students per Day and Session if 100% return

AM/PM Session	MONDAY	TUESDAY	WEDNESDAY	THURSDAY
7:30AM-9:30AM	151	131	115	121
12:30PM-3:30PM	109	134	117	97

Closure Decisions in Consultation with Health Officers



- If your student has a close contact exposure you will notified and informed of the local public health recommendations
- Should SVCTE experience a closure Parents/Guardians will be notified immediately
- Students will return to Distance Learning should the school experience a closure
- For More information see page 41 at [Consolidated School Management](#)

https://www.cdph.ca.gov/Programs/CID/DCDC/CDPH%20Document%20Library/COVID-19/Consolidated_Schools_Guidance.pdf

Certifications

- Our main priority during reopening is the safety of our students, faculty and staff
- Due to State and County COVID restrictions some of our courses may be unable to provide industry recognized certifications
- Certain certifications require hands on training that is currently unavailable to the students due to industry temporary shutdowns and/or non essential staff restrictions
 - Your student's teacher may provide more information regarding the requirements for each certification offered

Parent COVID-19 Resources



TESTIMONIALS FOUNDATION ALUMNI SUPPORT REQUEST CAMPUS ENTRY APP



IN HIGH SCHOOL - ADULT EDUCATION - DISTRICT INFORMATION - ABOUT US -

COVID-19 INFORMATION

COVID-19 Parent Resources

COVID-19 Updates & FAQs

Campus Entry App



www.metroed.net/covid19-parents

COVID-19 Parent Resources

CA Safe Schools for All

State of California Safe Schools For All Hub

California Safe Schools for All is the statewide regional hub for providing a consistent and unified information and resources for parents, school administrators, and school staff. This website is a central resource and the starting point for all parents, school administrators, and school staff.

The Safe Schools for All Hub provides information on COVID-19 and how to keep your child safe at school.

School Administrators
Helps school administrators understand the requirements for Safe Schools for All Hub.

School Staff & Parents
Helps school staff and parents understand the requirements for Safe Schools for All Hub.

Start Your Request

California's Safe Schools for All Plan

Learn how we will ensure all students are safe and healthy, and how we will ensure all students are safe and healthy, and how we will ensure all students are safe and healthy.

The Summary The Rationale The Science

State of California Safe Schools for All Hub

Santa Clara County PUBLIC HEALTH

A Parent's Guide

To the Reopening of Santa Clara County K-12 Schools

for the 2020-2021 School Year

Survey due by tomorrow March 10, 2021



[Reopening Survey](#)

<https://forms.gle/W8LEhUzqnU4HSeKa6>



Section 1 of 2

SVCTE Reopening Family Survey for 3/22/21



Si necesita ayuda con la traducción para completar esta encuesta, llame al 408-723-6401.

Email Questions to

Alecia Myers-Kelley, Director

amkelley@metroed.net

Nick Laskowski, Assistant Principal

nlaskowski@metroed.net

Marleen Dinis, Academic Coordinator

mdinis@metroed.net

Lora Hunter, Counseling Coordinator

lhunter@metroed.net