



TOWN & COUNTRY PLASTICS

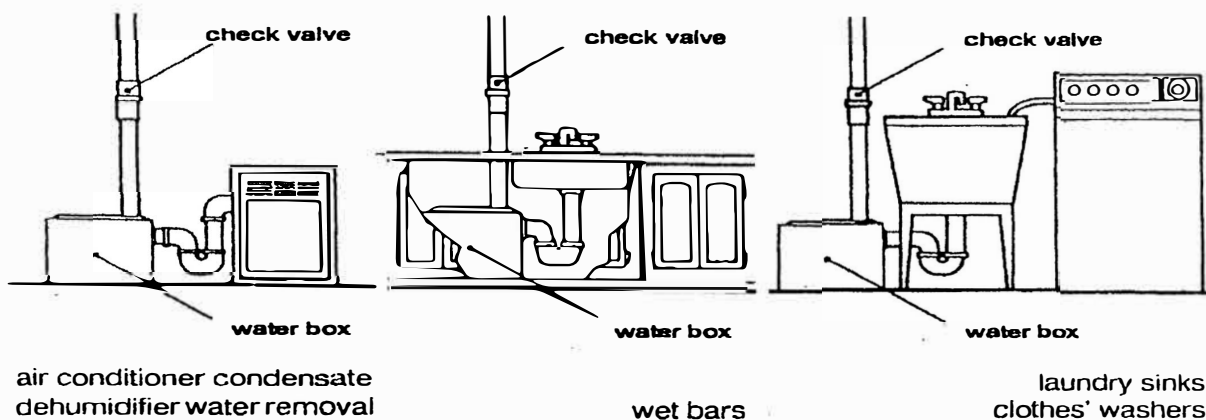
Customized For Precision

10-B Timber Lane, Marlboro NJ 07746

732-780-5300

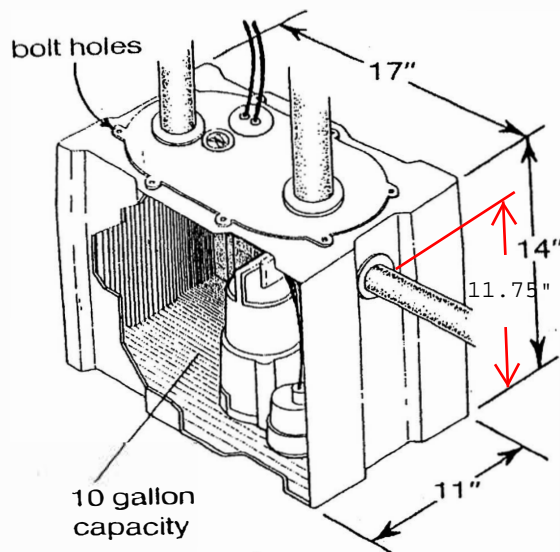
TC Model TCCA-427 Application,

Installation & Dimensions



For best results install with a check valve.

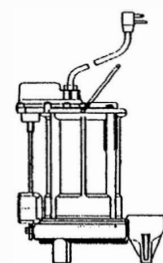
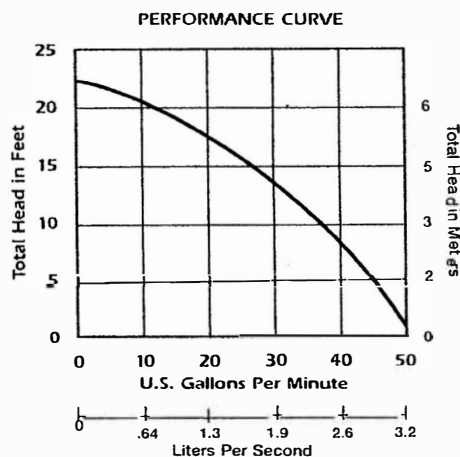
Dimensions



Installation Instructions

1. Place pump within water box.
2. Connect 1.5" inlet pipe.
3. Connect discharge pipe.
4. Bolt lid down.
5. If necessary install vent pipe.

PERFORMANCE CURVE



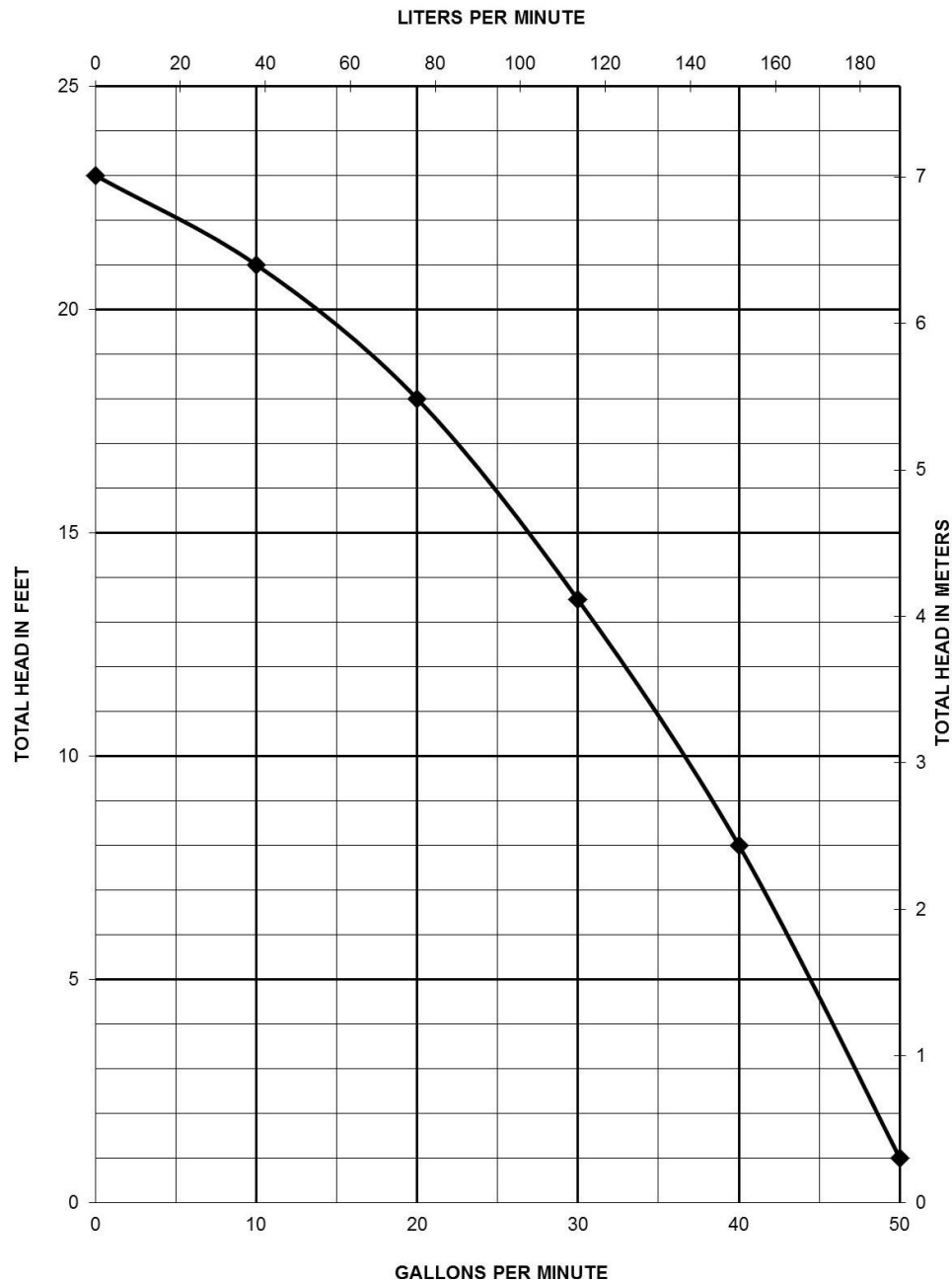
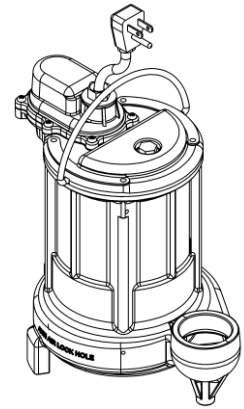
Model 257 VMF

(U.S. Patent #5324171)
VMF switch, magnetically operated vertical float – operates in a 10" diameter sump.

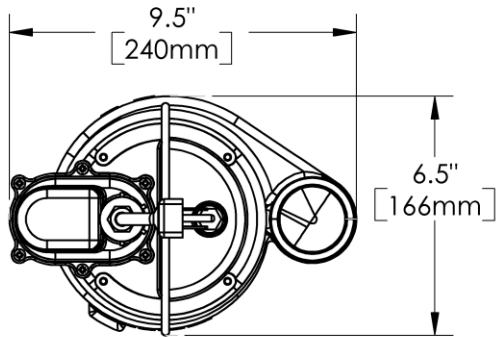
1/3 HP, 1/60/115 volt

Pump Specifications

250 Series Submersible Sump / Effluent Pump

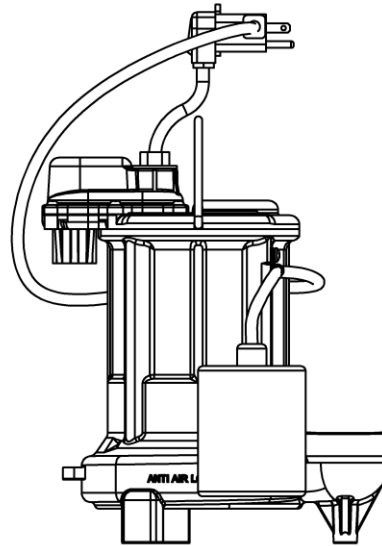
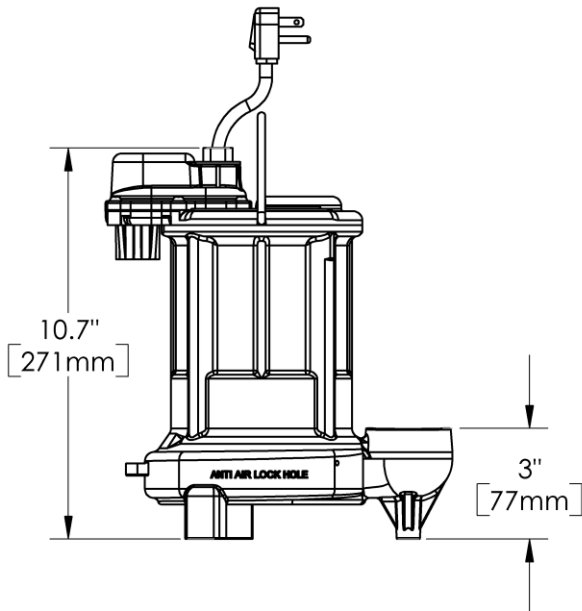


250-Series Dimensional Data



MANUAL VERSION
115V CORD

PIGGY BACK - AUTOMATIC VERSION



PROPRIETARY AND CONFIDENTIAL
THE INFORMATION CONTAINED IN THIS
DRAWING IS THE SOLE PROPERTY OF
<INSERT COMPANY NAME HERE>. ANY
REPRODUCTION IN PART OR AS A WHOLE
WITHOUT THE WRITTEN PERMISSION OF
<INSERT COMPANY NAME HERE> IS
PROHIBITED.

APPLICATION

DO NOT SCALE DRAWING

DWG. NO.

250 SERIES DIMENSIONAL

SIZE
A

JAN / 2007

REV.
A

SCALE:1:4

WEIGHT: 23 LBS

SHEET 1 OF 1

250-Series Electrical Data

MODEL	HP	VOLTAGE	PHASE	FULL LOAD AMPS	LOCKED ROTOR AMPS	THERMAL OVERLOAD TEMP	STATOR WINDING CLASS	CORD LENGTH FT	DISCHARGE	AUTOMATIC
250	1/3	115	1	5.2	8	105°C / 221°F	B	10	1 1/2	NO MANUAL
251	1/3	115	1	5.2	8	105°C / 221°F	B	10	1 1/2	YES INTEGRAL FLOAT
253	1/3	115	1	5.2	8	105°C / 221°F	B	10	1 1/2	YES PIGGY BACK FLOAT
257	1/3	115	1	5.2	8	105°C / 221°F	B	10	1 1/2	YES INTEGRAL VERTICLE FLOAT

250-Series Cord Length Options*

Model	10'	25'(-2)	35'(-3)	50'(-5)
250	Standard	Optional	Optional	Optional
251	Standard	Optional	Optional	Optional
253	Standard	Optional	Optional	N/A
257	Standard	Optional	N/A	N/A
10' cord length standard on all models. For optional lengths, add "-2, -3 or -5" suffix to model number. Example: for model 250 with 35' cord. Order 250-3				

WARNING: *Always use a replacement power cord assembly of the same length and type as originally installed on the product. Using a cord of improper gauge or length may lead to exceeding the electrical rating of the cord and could result in death, injury, fire or other significant failure.

THE STANDARD FEATURES

- ❖ ALL COMPONENTS CONSTRUCTED OF DURABLE, CORROSION-RESISTANT POLYETHYLENE RESIN
- ❖ UNIQUE DESIGN MAKES FOR EASY INSTALLATION
- ❖ LARGE 11 GALLON CAPACITY
- ❖ GROMMETS FOR SEALING DISCHARGE, VENT, & ELECTRIC CORD PROVIDED
- ❖ DISCHARGE SIZE OPTIONS: 1-1/4" & 1-1/2"
- ❖ 1-1/2" THREADED "SPIN-WELD" INLET
- ❖ INDIVIDUALLY BOXED AND THE SUMP BOX SYSTEM IS EASILY SHIPPED UPS OR COMMON CARRIER
- ❖ TOTAL CUSTOM SERVICE IS AVAILABLE, WE CAN MANUFACTURE YOUR OWN SPECIAL PRE-PIPED SYSTEM WITH YOUR PUMPS INSTALLED AT OUR PLANT



PART No.: B1000

THE DETAILS

When You are looking for a large capacity, above the floor 'grey water' pump system THE SUMP BOX SYSTEM from TOPP is the answer.

Typical applications include laundry trays, wet bars, dehumidifier, water softeners, and capturing air conditioner condensation. The 11 gallon is perfect for the more demanding needs of commercial applications such as restaurants, cocktail lounges, and other related areas that require handling an increased volume of grey water.

THE SPECIFICATIONS

Basin:

Capacity: 11 U.S. Gallons
Weight: 7 LBS
Wall Thickness: 3/16"

Cover:

Weight: 1 LBS

High Water Alarm Float Switch Option (if specifying a High Water Alarm)

Mechanically-activated switch designed for direct control of pumps up to 1/2 HP at 120 VAC and 1 HP at 230 VAC.

This mechanically-activated pump switch is designed to operate in non-potable water and sewage applications with limited space. It works well in small sump chambers, effluent applications, and laundry trays, as well as in large tanks.

The SJE VerticalMaster® pump switch is not sensitive to turbulence.

It is available for pump down applications only.



U.S. Patent No. 5,155,311
Canadian Patent No. 2,060,748

FEATURES

- Heavy-duty contacts.
- Controls pumps up to 1/2 HP at 120 VAC and 1 HP at 230 VAC.
- Adjustable pumping range of .75 to 6.5 inches (2 to 17 cm).
- Includes standard boxed packaging.
- UL Recognized for use in non-potable water and sewage.
- CSA Certified.
- Three-year limited warranty.



SPECIFICATIONS

CABLE: flexible 16 gauge, 2 conductor (UL, CSA) SJOW or SJTOW, water-resistant (CPE)

MOUNTING BRACKET & HOSE CLAMP: stainless steel

LIFT ROD: injection molded acetal plastic

FLOAT STOP: neoprene

SWITCH AND FLOAT HOUSING: high impact, corrosion resistant, PVC housing for use in sewage and non-potable water up to 125°F (52°C)

overall dimensions: 12 inch high x 5 inch x 3 inch wide (30.5 cm high x 12.7 cm x 7.6 cm wide)

switch housing dimensions (excluding cable entrance): 2 inch high x 2.8 inch wide (5 cm high x 7.1 cm wide)

float housing dimensions: 2.3 inch high x 2.7 inch wide (5.8 cm high x 6.9 cm wide)

ELECTRICAL:

120 VAC 50/60Hz Single Phase:

Maximum Pump Running Current:

13 amps

Maximum Pump Starting Current:

60 amps

Recommended Pump HP:

1/2 HP or less

230 VAC 50/60Hz Single Phase:

Maximum Pump Running Current:

12 amps

Maximum Pump Starting Current:

60 amps

Recommended Pump HP:

1 HP or less

OPTIONS

This switch is available:

- with a 120 VAC or 230 VAC piggy-back plug.
- without a plug for direct wiring in 120 VAC or 230 VAC applications.
- in standard cable lengths of 10, 15, 20, or 30 feet and 3, 5, 6, or 10 meters (longer lengths available).



PO Box 1708, Detroit Lakes, MN 56502
1-888-DIAL-SJE • 1-218-847-1317
1-218-847-4617 Fax
email: sje@sjerhombus.com
www.sjerhombus.com



Series 1000-1 & 1000-4
2000-1 & 2000-4
Form 1000-C

