

Location: _____



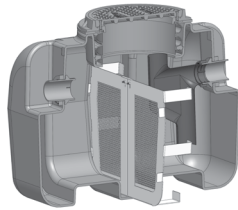
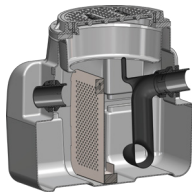
TOWN & COUNTRY PLASTICS
Customized For Precision

XL Series

T&C – HDPE Lint Interceptors

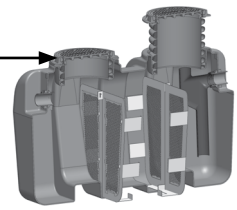
Specification: T&C Plastics Series ____ HDPE rotational molded lint interceptor with liquid holding capacity of ____ (indicate) gallons. Unit shall include: dual strainer baffles with 1/4" perforations, deep seal trap covered by lid, adjustable lid system, sample port access and 4" no hub inlet and outlet connections. Steel encased composite lid provides a water / gas tight seal and has a minimum of 20,000 lbs. load capacity. The lid is designed in accordance with the loading requirements of AASHTO H20.

Function: Used in laundries and maintenance facilities to receive waste water that contains lint. The lint interceptor will filter out lint and sediment from the fixture waste line before entering the pipe system to reduce clogging and improve performance. Typically installed either on or into the floor. Narrow width permits access through doorways and down stairwells. High Density Polyethylene construction ensures a lightweight installation process (two people can move and install it). Regular maintenance is required to keep the interceptor functioning. All XL interceptors can withstand a temperature of up to and including 180 degrees Fahrenheit.

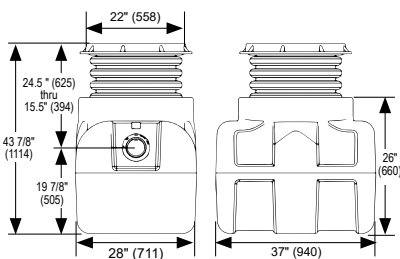


U.S. Patent
9,551,142

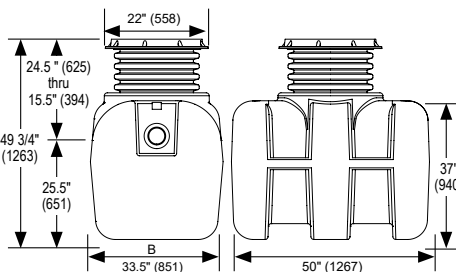
Illustrated
with Direct
Connect lid
(Standard)



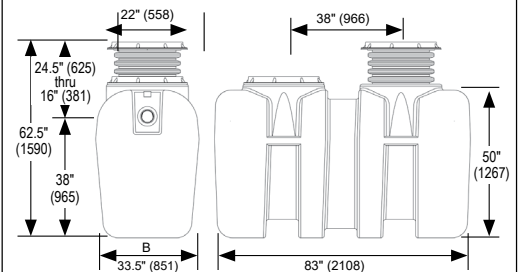
LINT-XL-50



LINT-XL-75



LINT-XL-100



	Model No.	LIQUID CAP. (Gallons / Cu. Ft.)	SOLIDS CAP. (Gallons / Cu. Ft.)	B Width	Shipping Weight (Lbs.)
	LINT-XL-50	55 / 7.19	28 / 4	28.00"	92
	LINT-XL-75	140 / 18.30	70 / 9	33.50"	165
	LINT-XL-100	300 / 39.21	150 / 20	33.50"	290

OPTIONAL VARIATIONS

Anchor kit for XL Series
Lid Extension - up to 44" high - for XL Series
Lid Extension - up to 72" high - for XL Series
6" no hub inlet and outlet - for each piece (Two pieces required)
High level alarm and float switch (to be installed on site)
Remote pump out kit (also includes Remote Pump Out (-RPO)
3" Remote pump outlet connections on top of interceptor - specify location and number required
External sampling port - inline, high connections
External sampling port - inline, low connections
External sampling port - offset

PART NO.

XL-AK
XL-EXT-44
XL-EXT-72
XL-F6
XL-RPOK
XL-RPO
XL-HLA
XL-SP-H
XL-SP-L
XL-SP-OF

CALIFORNIA PROPOSITION 65 WARNING. This product contains chemicals known to the State of California to cause cancer and birth defects or other reproductive harm.

Job Name: _____

Page No: _____

Section No: _____

Contractor: _____

Schedule No: _____

Purchase Order No: _____