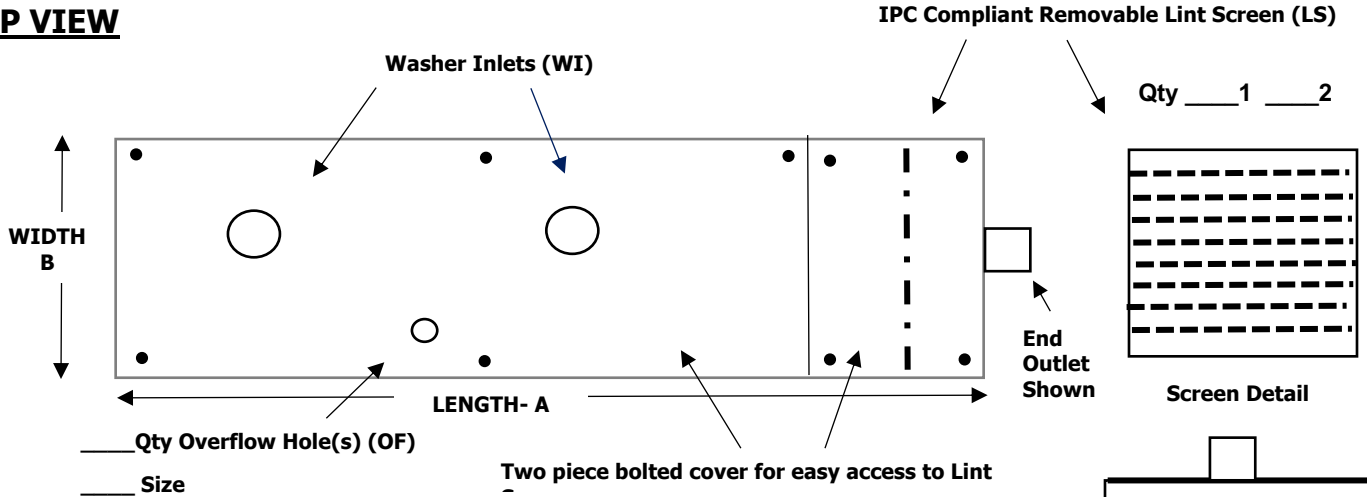


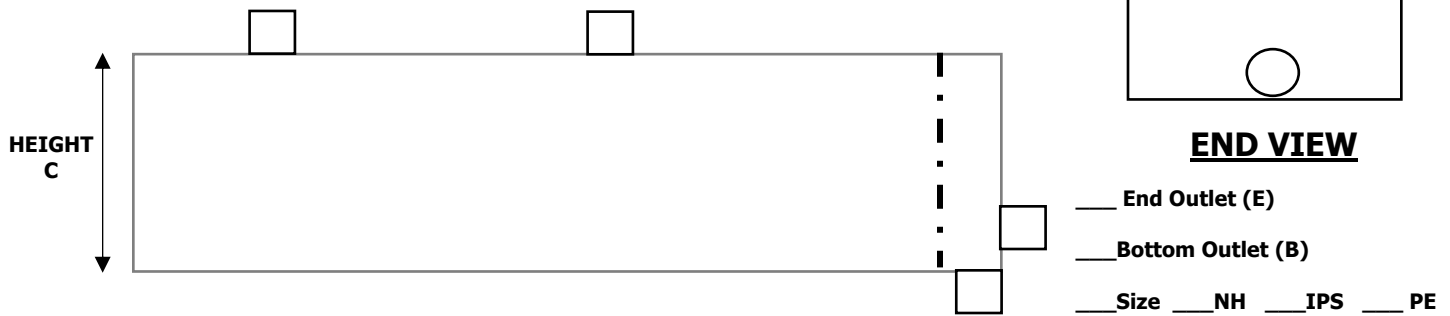


### LINT INTERCEPTORS- LIR Series Chemical Resistant

#### TOP VIEW



#### SIDE VIEW



#### Model #

Length A	Width B	Height C	Outlet Size	Outlet Type	Location E or B	Inlet size & #	Size & #overflows	# of lint screens	Installation Style fully recessed, semi-recessed, on floor
LIR- _____	- _____	- _____	- _____	- _____	- _____	- _____	WI- _____	OF _____	LS - _____

#### Notes

- Install with access to lint screens for easy cleaning
- Maximum height 24" without external steel supports, at additional cost.
- Maximum width
- Maximum Length
- Advise inlet and overflow locations on this sheet.
- Up to 8' body length to be fabricated from 1/4" thick, polypropylene (PE)
- 8'1" to 10' to be fabricated from 1/2" thick, polypropylene (PE)
- Units can be installed in series for added capacity, Lint screens only installed in last unit with drain to sanitary

#### Specification

Provide Town & Country LIR series Lint Interceptor, model and size as noted, to be fabricated from chemical resistant polypropylene, rated for 212 degrees continuous and 220 degrees intermittingly with removable lint screen(s), complying with International Plumbing Code (IPC). Two-piece cover to be fabricated from 1/2" thick PP with no-hub washer inlet(s) and overflow hole(s), sizes and quantities as noted. Installation below grade, semi-recessed or on floor as noted, with clear access to lint screen cover section for easy cleaning. Provide ThermaOmegaTech drain tempering valve, model DTV, if washer temperature is greater than 140 degrees.