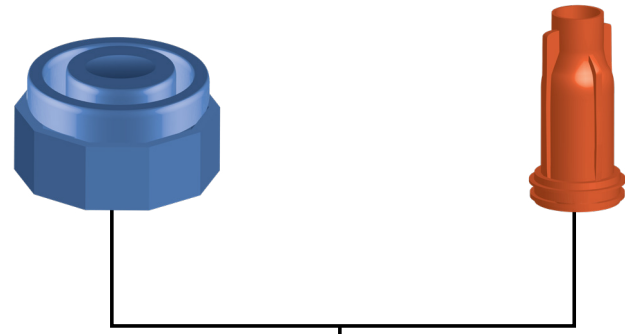
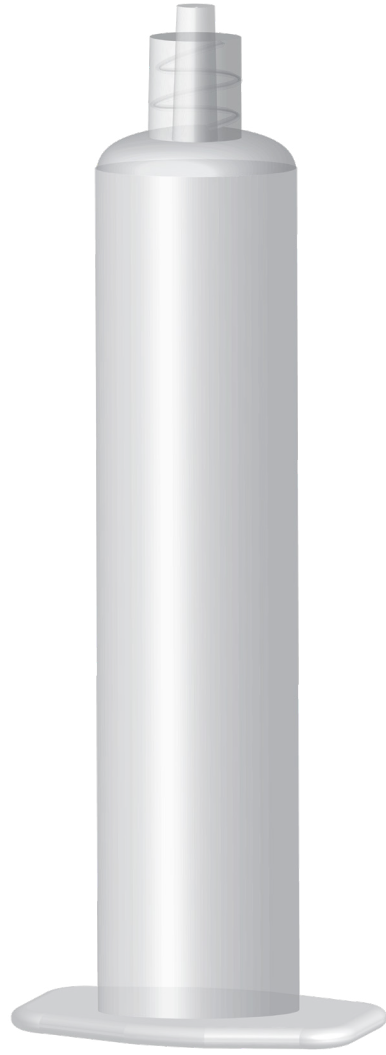


TIP CAPS



SYRINGES

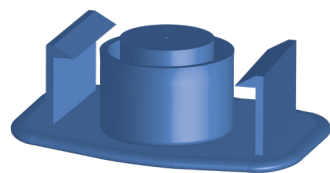


1 oz, 30 cc
1.86 oz, 55 cc



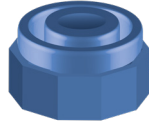

30 cc
50 cc

PLUNGERS


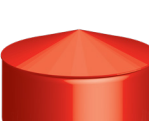
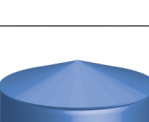



30 cc
55 cc

END CAPS

| TIP CAPS | | | | | | | |
|---|-----------------------------|-------------------------------|-------------------------------|---------------|-----------|-----------------------------------|-------------------------|
| Product | Size US (oz.) | Size Metric (ml) | Material | Color | SEMCO p/n | TECHCON p/n | |
| The TECHCON Part Numbers listed in the table are the direct replacement for the corresponding SEMCO part numbers. | | | | | | | |
|  | Stand Up Tip Cap | Fits all syringe barrel sizes | Fits all syringe barrel sizes | Polypropylene | Blue | Similar to 310045 | 7015STC |
|  | Double Helix Thread Tip Cap | Fits all syringe barrel sizes | Fits all syringe barrel sizes | Polypropylene | Orange | Similar to 232991 | 7015LL |

| SYRINGES | | | | | | | |
|---|--------------------------|------------------|----------|---------------|-----------|------------------------|--------------------------|
| Product | Size US (oz.) | Size Metric (ml) | Material | Color | SEMCO p/n | TECHCON p/n | |
| The TECHCON Part Numbers listed in the table are the direct replacement for the corresponding SEMCO part numbers. | | | | | | | |
|  | Luer Lock Syringe Barrel | 1 oz | 30 ml | Polypropylene | Natural | 363016 | 7300LL1N |
|  | Luer Lock Syringe Barrel | 1 oz | 30 ml | Polypropylene | Amber | 363027 | 7300LL1D |
|  | Luer Lock Syringe Barrel | 1 oz | 30 ml | Polypropylene | Black | 363022 | 7300LL1B |
|  | Luer Lock Syringe Barrel | 1.86 oz | 55 ml | Polypropylene | Natural | 365516 | 7550LL1N |
|  | Luer Lock Syringe Barrel | 1.86 oz | 55 ml | Polypropylene | Amber | 365527 | 7550LL1D |
|  | Luer Lock Syringe Barrel | 1.86 oz | 55 ml | Polypropylene | Black | 365522 | 7550LL1B |

| PLUNGER | | | | | | | |
|---|----------------------|---------------------|---------------------|-------------------|-----------|------------------------|---------------------------|
| Product | Size US (oz.) | Size Metric (ml) | Material | Color | SEMCO p/n | TECHCON p/n | |
| The TECHCON Part Numbers listed in the table are the direct replacement for the corresponding SEMCO part numbers. | | | | | | | |
|  | Wiper Piston | 30 & 55 ml syringes | 30 & 55 ml syringes | Polyethylene (PE) | White | 363035 | 7300009W |
|  | Straight Wall Piston | 30 & 55 ml syringes | 30 & 55 ml syringes | Polyethylene (PE) | Red | 363005 | 7300006R |
|  | Easy Flow Piston | 30 & 55 ml syringes | 30 & 55 ml syringes | Polyethylene (PE) | Blue | 363008 | 7300007BL |

| END CAPS | | | | | | | |
|---|---------------|---------------------|--------------------------|-------------------|-----------|--|--------------------------|
| Product | Size US (oz.) | Size Metric (ml) | Material | Color | SEMCO p/n | TECHCON p/n | |
| The TECHCON Part Numbers listed in the table are the direct replacement for the corresponding SEMCO part numbers. | | | | | | | |
|  | End Cap | 30 & 55 ml syringes | Fits 30 & 55 ml syringes | Polyethylene (PE) | Blue | 313503 , 316003 & 363003 | 730000CB |