

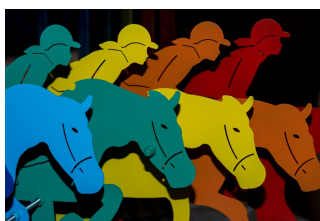


MLPB

ADVANCING HEALTH THROUGH JUSTICE

November 2019

READ ALL ABOUT IT



The 'Cavalry' Isn't Coming:

We All Must Become the Cavalry.

Are you concerned about the health and well-being of families with young children, and the adequacy of the "toolbox" available to accelerate their access to concrete support like food, housing, health coverage and more? Read [Samantha Morton's new long-form blog entry](#) on how we can democratize access to legal problem-solving strategies through new capacity-building partnerships.

On a related topic, check out this 9/27/19 **Children's Health Watch** [blog post](#)! MLPB is honored to partner with [CHW](#), [Project Hope](#), the [Boston Housing Authority](#), and [Nuestra Comunidad](#) to enhance housing stability for families with young children.



SAVE THE DATE!

MLPB Spring Breakfast 2020

Mark your calendars! MLPB's annual breakfast will be held on **May 13, 2020** from **8am-11am** in Boston. More details to follow in the new year!



From 2019: Panelists L-R: Moderator **Tara Murphy** (*Deputy Director, MassHealth DSRIP Statewide Investments*); **Erin Loubier** (*Senior Director for Health and Legal Integration and Payment Innovation, Whitman-Walker Health*); **Baraka Floyd** (*Clinical Assistant Professor, Stanford School of Medicine*); **Dayce Moore** (*Manager - Business & Service Delivery Development, UMass Medical School Disability Evaluation Service*); and **Dannie Ritchie** (*Founder, Community Health Innovations of RI & Clinical Assistant Professor of Family Medicine, Brown University*)

CONNECT WITH US

REGISTER NOW

"Conditions of disrepair: People's Rights to Access and Secure Healthy Housing"



Wednesday, December 4, 2019, 12:00-1:30pm (BYOL)

Nannery Conf. Room (Rm.134, Clemence Hall)

Saint Anne's Hospital, Fall River, MA

Massachusetts has some of the oldest housing stock in the United States. Maintaining residential properties can be costly and challenging. All too frequently, apartments are poorly cared for leading to conditions of disrepair that impact patient's health. MLPB will present a 1-hour overview of the nexus between housing and health, challenges patients experience in remedying conditions of disrepair, and ways health and human service care teams can employ advocacy strategies to support patients with housing problems. MLPB's presentation will include case studies and time to workshop complex problems that arise in your own real-life practices.

Register now by e-mail:

ana.dabruzzo@steward.org

Social Work CEU's will be available



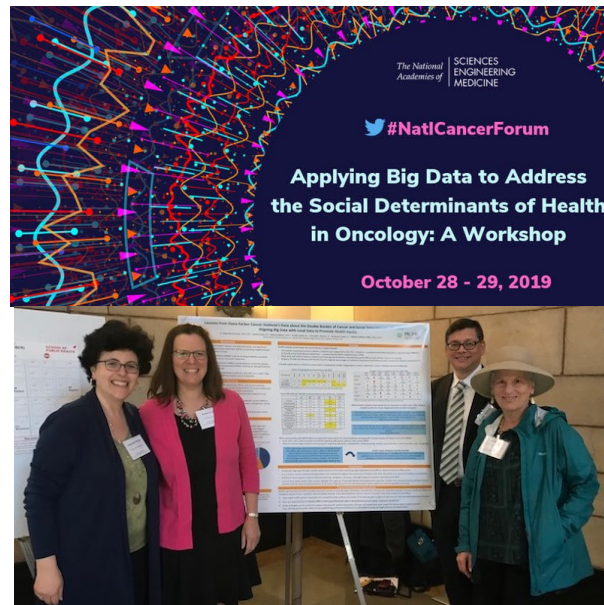
ON THE MOVE



2019 National Cancer Policy Forum

Applying Big Data to Address the Social Determinants of Health in Oncology:

A Workshop



(L-R) **Samantha Morton** (CEO, MLPB); **Rachel Levine** (Senior Program Evaluator, DFCI); **Tim Rebbeck** (Associate Director for Cancer Equity and Engagement, DFCI); **Arlene Ash**, (Professor and Division Chief, Biostatistics and Health Services Research, UMass Medical School)

Alongside [Dana-Farber Cancer Institute](#) colleagues, we were honored to present a joint [poster](#) at the [National Cancer Policy Forum](#) on October 28, convened at the [National Academies of Sciences, Engineering, and Medicine](#). This event spotlighted population-level social, economic and environmental needs as a dimension of oncology research and care, and how big data can be leveraged to improve health equity and reduce disparities.

2019 RI Economic Inclusion Summit

October 23 @ The Rhode Island Foundation, Providence RI



Last month, MLPB Legal Advisor Jeannine Casselman connected the dots between healthy housing solutions and broadened economic inclusion at a regional event hosted by the [FDIC](#).



Do you value a curation of recent scholarship and press relating to social dimensions of health, emerging social science, and how people's legal risks, rights and remedies intersect with health and well-being? We do.

Recent highlights are below. For more, head [here](#).

Access to Justice & Health

- [SJC Chief Justice Ralph Gants endorses right to a lawyer for tenants and landlords in eviction cases](#) (*MassLive*, Oct. 30, 2019)

Care Transformation: Delivery & Financing for SDOH/HRSN

- [Hot-Spotting North Carolina's Medicaid Transformation](#) (*Health Affairs*, Nov. 5, 2019)
- [Frequent Emergency Department Users: Focusing Solely On Medical Utilization Misses The Whole Person](#) (*Health Affairs*, Nov. 2019) (subscription required)
- [When Talking About Social Determinants, Precision Matters](#) (*Health Affairs*, Oct. 29, 2019)
- [Why North Carolina might be the most innovative health care state in America](#) (*Politico*, Oct. 24, 2019)
- [Exploring The Relationship Between Social And Medical Service Spending](#) (*Health Affairs*, Oct. 15, 2019)
- [Are Medicare Advantage Plans Using New Supplemental Benefit Flexibility to Address Enrollees' Health-Related Social Needs?](#) (*The Urban Institute*, Sep. 2019)
- [Prevalence of Screening for Food Insecurity, Housing Instability, Utility Needs, Transportation Needs, and Interpersonal Violence by US Physician Practices and Hospitals](#) (*JAMA Network*, Sep. 18, 2019)
- [Social determinants of health — health care isn't just bugs and bacteria](#) (*The Hill*, Sep. 4, 2019)

- [Does your zip code define your life expectancy?](#) (*Providence Journal*, Sep. 2019)
- [Screening for Social Determinants of Health The Known and Unknown](#) (*JAMA Network*, Aug. 29, 2019) (*subscription required*)
- [Integrating Social Care into the Delivery of Health Care](#) (*National Academies of Sciences, Engineering, and Medicine*, 2019)

Discrimination, Racism & Health Disparities

- [Dissecting racial bias in an algorithm used to manage the health of populations](#) (*Science*, Oct. 25, 3019)
- [Justice Department letter describes how Providence set up English-learning students to fail](#) (*The Boston Globe*, Sep. 16, 2019)
- [Rates of maternal mistreatment in the US are high across the board — especially for women of color](#) (*The Boston Globe*, Sep. 13, 2019)

Early Childhood

- [If ICE Knocks on the Door During a Home Visit](#) (*ParentChild+*, undated)
- [Vital Signs: Estimated Proportion of Adult Health Problems Attributable to Adverse Childhood Experiences and Implications for Prevention — 25 States, 2015–2017](#) (*Centers for Disease Control and Prevention*, Nov. 8, 2019)
- [Identifying and Preventing Adverse Childhood Experiences: Implications for Clinical Practice](#) (*JAMA Network*, Nov. 5, 2019)
- [Some Boston neighborhoods face severe shortage of child care — and it's unaffordable almost everywhere](#) (*The Boston Globe*, Nov. 5, 2019)
- [DCF moves busy offices away from city centers, making it harder for parents to see kids](#) (*The Boston Globe*, Oct. 29, 2019)
- [Ending Gaze Aversion Toward Child Abuse And Neglect](#) (*Health Affairs*, Oct. 2019) (*subscription required*)
- [Preventing Adverse Childhood Experiences \(ACEs\): Leveraging the Best Available Evidence](#) (*National Center for Injury Prevention and Control Division of Violence Prevention* 2019)

Food Insecurity

- [The Effect Of The Supplemental Nutrition Assistance Program On Mortality](#) (*Health Access*, Nov. 2019) (*subscription required*)
- [Detroit Entrepreneurs Fight Food Insecurity With Lessons Of The Past](#) (*NPR*, Oct. 27, 2019)

Housing Instability

- [The Surprising Roles That Landlords \(And Philanthropy\) Can Play In Promoting Children's Health](#) (*Health Affairs*, Oct. 8, 2019)

Immigration Status & Health

- [Correcting The Contradictions: Immigration Policy And HIV](#) (*Health Affairs*, Nov. 8, 2019)
- [Five Victories For Public Health: Courts Enjoin The Public Charge Rule](#) (*Health Affairs*, Oct. 18, 2019)
- [New Evidence Demonstrates That The Public Charge Rule Will Harm Immigrant Families and Others](#) (*Health Affairs*, Oct. 9, 2019)
- [Upshot: A Million Fewer Children on Medicaid. What Happened?](#) (*The New York Times*, Oct. 22, 2019)

Income & Health

- [When Poor People Are Beaten for Seeking Help](#) (*The New York Times*, Oct. 27, 2019)

Utility Needs

- [Providence releases 'climate justice plan'](#) (*Providence Journal*, Oct. 25, 2019)

MLPB believes in the power of justice to advance health. We equip health and human services teams with problem-solving strategies that disrupt the evolution of a person's social, economic, or environmental need into a legal — and health — crisis. Through robust training and technical assistance, we help workforce partners understand their unique capacities to *unlock access* to a range of health-promoting benefits, services, and legal protections — thereby advancing health equity.

MLPB is a fiscally sponsored program of [TSNE MissionWorks](#).

Information contained in this newsletter is for educational purposes only and does not constitute legal advice or establish an attorney-client relationship.

Connect with us



MLPB, 200 Portland Street, 5th Floor, Boston, MA 02114

[Unsubscribe](#) [Manage preferences](#)

