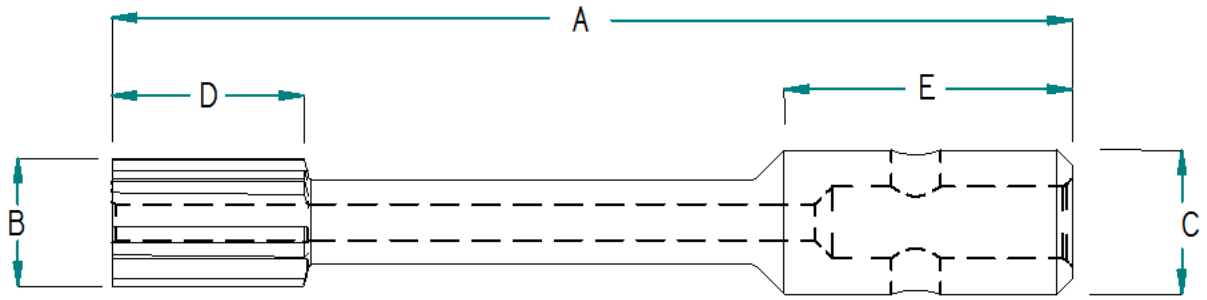
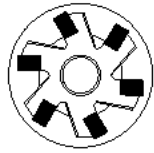


# STANDARD PROTO-CUTTER PIN FLOAT REAMER



TYPE OF MATERIAL CUTTING: \_\_\_\_\_

MICRO FINISH REQUIREMENT \_\_\_\_\_

A \_\_\_\_\_

B \_\_\_\_\_

C \_\_\_\_\_

D \_\_\_\_\_

E \_\_\_\_\_

HELIX ANGLE \_\_\_\_\_

NUMBER OF FLUTES \_\_\_\_\_

COATING \_\_\_\_\_

CHAMFER LENGTH \_\_\_\_\_

CHAMFER ANGLE \_\_\_\_\_



CIRCLE ONE ITEM

COOLANT THROUGH CENTER:  
(FOR BLIND HOLES) YES / NO

COOLANT HOLES BETWEEN FLUTES:  
(FOR THROUGH HOLES) YES / NO

DIRECTION OF CUT: RIGHT / LEFT

DIRECTION OF SPIRAL: RIGHT HAND / LEFT HAND / STRAIGHT

CARBIDE TIPPED TOOL: YES / NO

SOLID CARBIDE TOOL: YES / NO

HSS TOOL: YES / NO

END CUTTING: YES / NO

TOLERANCES ON DIMENSIONS WILL BE TO PROTO-CUTTER  
STANDARDS  
UNLESS OTHERWISE STATED

**Proto-Cutter, Inc.**  
Precision Cutting Tools

	SHARPENING SPECS	TITLE	
		CAD FILE	REV
		Customer	
	FLUTE GRINDING	APPROVED/DATE	MATERIAL
		SCALE	