



# PRODUCT CATALOGUE

# SCREEN WASHING

---

*PK 92-series*



**FLEXO WASH**  
Leading Cleaning Solutions

# EFFECTIVE CLEANING OF ROTARY SCREENS

The Flexo Wash PK 92 Rotary Screen Wash is used for the cleaning of rotary screen cylinders from printing machines using UV-drying screen inks.

## ENSURES THOROUGH CLEANING

The screens are placed on rotating holders and the specially designed jets on both sides of the screen ensure a thorough cleaning.

The holder on the PK 92-1 is equipped with an adjustable plate, making it possible to adjust to different screen sizes.

## TAKE CARE OF YOUR SCREENS

- Clean and dry screens in a short time
- Quick and gentle wash operation
- Timer-controlled washing time - can be adjusted from 1-100 minutes
- Limited labor involved and minimal maintenance.

## BEFORE WASH



## AFTER WASH



Use together with  
Filtration Unit



## PK 92-1

- For cleaning of one screen
- Max diameter:  
270 mm (10.6")
- Max length:  
755 mm (29.7")



## PK 92-2

- For cleaning of two screens
- Max diameter:  
270 mm (10.6")
- Max length:  
600 mm (23.6")

# HOW DOES IT WORK?

---

## ECO-FRIENDLY & HARMLESS CLEANING

The PK 92-series requires only 30L of cleaning solution which is circulated by means of an air powered diaphragm pump. The liquid is filtered and recirculated in a closed-circuit system without any waste to the environment. The cleaning liquid used is our eco-friendly FW86500, which is guaranteed harmless to the screens.

The washing time is controlled by a timer, adjustable from 1 to 100 minutes. Normal washing time is approx. 10 minutes.

## OPTIONS AND ACCESSORIES

- Extra dip rinse tank
- Fixation for small screens

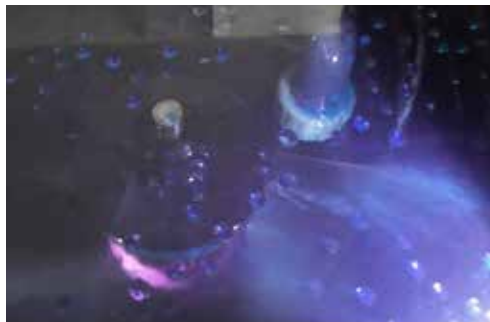
### TIMER

The washing time is easily set with the integrated timer.



### WASHING

The screen is sprayed with liquid from both the inside and outside to ensure safe and thorough cleaning.



### DRYING

After cleaning the screen can be moved to the integrated chamber for drying.

If the screen has to be rinsed with alcohol an external dip tank can be purchased.



# MACHINE DETAILS

---

## CONTROL SYSTEM

The unit has a panel with pneumatic controller.

## PUMPS

Diaphragm pump for washing.

## FILTER

The filter is placed next to the liquid tank under the machine and will collect the major ink particles, for longer lifetime of cleaning liquid.

## NOZZLES

All nozzles are made of PWDF and can easily be changed. The nozzles are spraying from different angles ensuring a fast operation and efficient washing.

## TANK

The tank for cleaning liquid is made of PE.

- The tank is placed under wash unit.
- Liquid can easily be filled into the tank through the filling funnel and has a valve in the bottom which makes it easier to empty it.

## RINSE WATER

Disposal of liquid waste and rinse water must be in accordance with local rules and authorities. It is the customers responsibility to ensure that any disposals are approved by all the required local authorities.

## CLEANING LIQUID

Flexo Wash supplies all types for environmentally friendly cleaning liquids and the specific type depends on the type of ink.

Flexo Wash recommends the following eco-friendly cleaning liquids:

- FW 86500 Screen Washer

# CUSTOMER FEEDBACK

---

One of Belgium's leading label converters, Desmedt, has invested heavily in a package of cleaning technology manufactured by Danish company Flexo Wash.

## THE BEST SOLUTION

Speaking for Desmedt, owner Henri Köhler said: *"In today's highly competitive marketplace you need to have all elements of production under control to run best quality. To ensure our new presses could achieve peak performance we needed to ensure that all working parts were as clean as possible. Flexo Wash technology is well proven and offered us the best solution."*

The package was negotiated by Maarten van Bergeijk of Packtion BV, the Flexo Wash agent for Benelux. Commenting on the installation, he said: *"Desmedt's aim was to standardise quality across all production platforms, and the extensive package of cleaning technology will allow them to do that."*

” *Desmedt's aim was to standardise quality across all production platforms, and the extensive package of cleaning technology will allow them to do that.*



” *Flexo Wash technology is well proven and offered us the best solution.*

## PACKAGE OF 6 FLEXO WASH UNITS

The list of Flexo Wash machines installed at Desmedt includes a PK 200 WR TrolleyLoad Parts Washer, with a small trolley for UV Ink, and a PK ECO Maxi WR Parts Washer for water-based ink.

There is an FW 993 XL Anilox Roll Cleaner that handles up to nine rolls per wash, a PK 92 Screen Washer and PW 82 WR Plate Washer. Flexo Wash also installed a PK Filtration Unit that can be used for both the PK 200 and the PW 82 machines.