

Advanced Workflow Engine

Add complex workflows to EFT™ Event Rules



KEY FEATURES

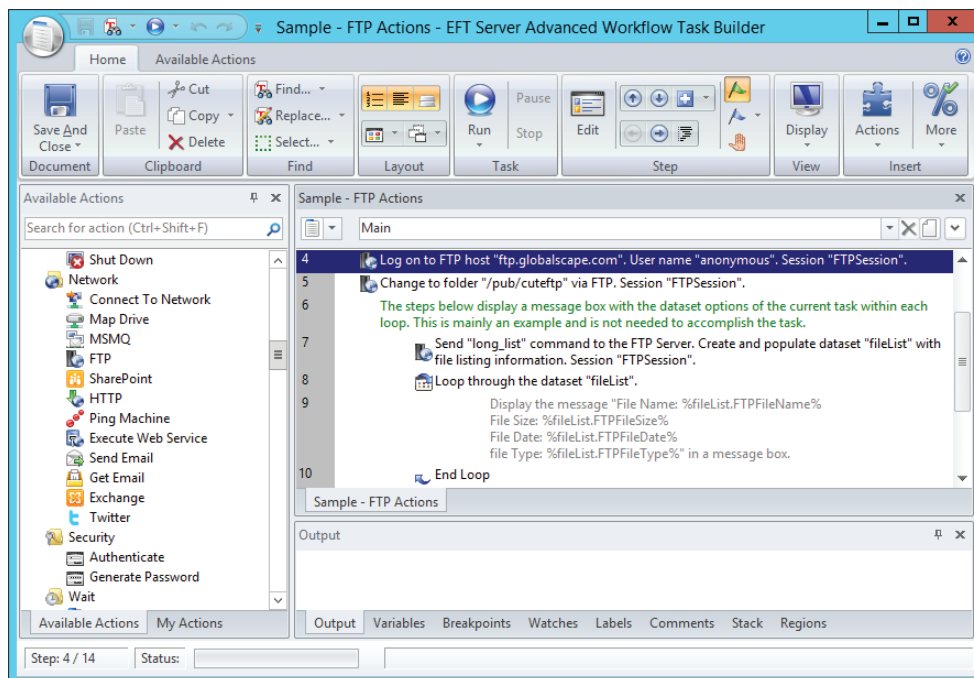
- Create automated workflows without scripting
- Drag-and-drop and fill-in-the-blank workflow design
- XML-based, reusable, and shareable
- Integrate with Active Directory, SharePoint, Microsoft Excel, SQL Server, and others
- Easily define complex processes

AUTOMATE, OPTIMIZE BUSINESS PROCESSES

With file transfer at the center of so many business-critical processes, security is only the first aspect of a much greater IT concern. When information consumers in your organization rely on manual and intermittent batch processes to deliver the data they need, day-to-day productivity becomes dangerously vulnerable to manpower limitations, vacations, turn-over, and simple human error.

Streamline business processes without limitations.

The Advanced Workflow Engine (AWE) supplements Enhanced File Transfer™ Event Rules with additional complex actions, enabling you to streamline business processes without limitations imposed by legacy systems and applications. With AWE's intuitive workflow programming interface, administrators can easily create sophisticated automation and integration workflows without the need for code, scripting, or complicated batch files.

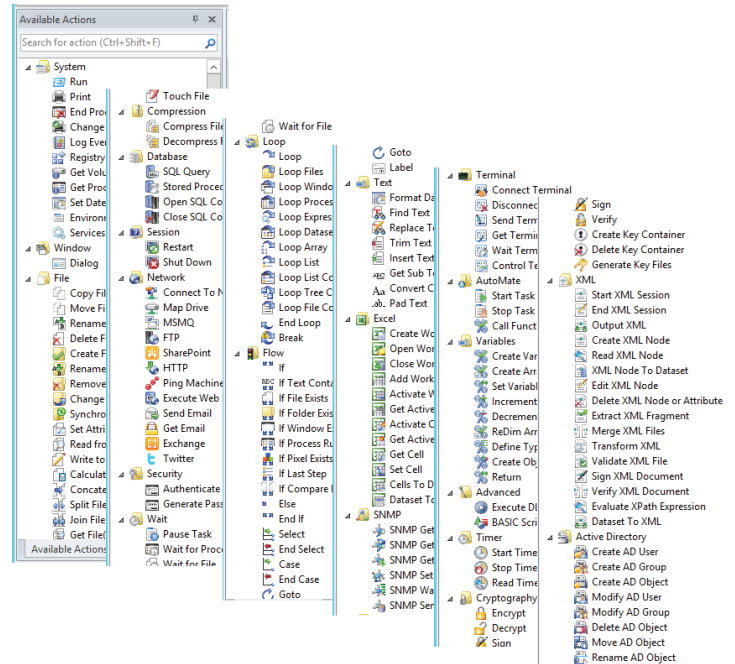


ADVANCED, SOPHISTICATED WORKFLOWS

AWE Workflows are inserted into EFT Event Rules. AWE supplements the EFT Actions with more than 100 additional Actions, as shown below.

AWE ACTIONS

- System actions, such as Run, Print, Log Event, and Set Date and Time
- Active Directory actions, such as Create AD Group and Create AD user
- Compress/decompress files
- Interact with cryptographic keys
- SQL connections and queries
- Create/Open/Close Excel Worksheet
- Join/Write to/Read from File, Calculate File Checksum, Create/Rename/Remove Folder, and many more file/folder actions
- Log on/off FTP, HTTP Get/Put, Connect to Network, Get Exchange Object, Execute Web Service, Get Email, Map Drive, Ping Machine, Upload to SharePoint, and many other networking actions
- Scripting actions such as Loop List, If, Else, and If File Exists
- SNMP actions, such as Get and Set
- Terminal actions, such as Connect, Send Terminal Text, and Disconnect
- Interact with text files: Find, Replace, Insert
- Variable actions, such as Create Variable, Create Array, and Set Variable
- XML Actions, such as Create XML Node, Read XML Node, and Dataset to XML



ABOUT GLOBALSCOPE

Globalscope is an innovative software company that secures mission-critical exchanges of data across multiple platforms - including remote and mobility solutions - for businesses worldwide.

Through superior software, standards compliance and experienced, reliable support, Globalscope secures information exchange for individuals, global enterprises, governments, and small and medium enterprises across a wide range of industries.