

Resource Management & Utilization Dashboard



Resource Management Overview

BigTime's resource management features simplify the way organizations plan the staff hours needed to complete their projects. Using utilization reports that syndicate time, staff members and budgets, project managers get real-time visibility on the staff's availability to take on more or less work. PM's can then directly assign a project and/or task hours within the resource dashboard.

Allocation Detail (Simple)

[← Back to Report Center](#)

[Edit Report Settings](#) Date Input 9/1/21 - 9/30/21

[?](#) [🔍](#) [🔧](#) [Export](#) [Customize](#) [↔](#)

Staff	Job	Task	Period	Allocated	Input	Ratio
Chicago Consultants:BigTime Training (3)						
Holtrop, Mary Pat	Chicago Consultants:BigTime Training	Design	8/1/21	--	9.00	--
Poetker, Bridget	Chicago Consultants:BigTime Training	Design	8/1/21	10.00	9.00	90%
Hill, Hannah	Chicago Consultants:BigTime Training	Development	8/1/21	--	20.00	--
Chicago Consultants:BigTime Training						

Skills Matching

With each project requiring unique skills and roles, it's important to easily find the staffer best suited for the job.

- ✓ Configurable categories allow you to group skills however makes the most sense to your firm
- ✓ Keep track and view staffers by unique skill set
- ✓ Rate staffers on a scale of 1-5 for clear view into who is most proficient at each skill (Staffers will not see these ratings unless you want them to)
- ✓ Already keeping track of skills elsewhere? No problem, you can easily import skills via our CSV template

Mary Pat Holtrop

[View Skill Cards](#) Add Multiple Skills

Skill Name	Industry	Category	Type	Rating	Added	Expire Date	File	
Data Analysis	Architectural	Analysis	Skill	★★★★☆	2021-10-28			
Project Management	Architectural	Management	Skill	★★★★☆	2021-10-28			
Survey Operator	Civil	Operations	Skill	★★★★☆	2021-10-28			
Blueprint Creation	Architectural	Technical	Skill	★★★★☆	2021-10-28			
System Design	Civil	Analysis	Skill	★★★☆☆	2021-10-28			
Technical Writing	Civil	Technical	Skill	★★★★★	2021-10-28			
Computer Science		Technical	Skill	★★★☆☆	2021-10-28			
Structural Analysis	Architectural	Analysis	Skill	★★★★☆	2021-10-28			

Close Undo Save Changes

Resource Management Benefits



Reduce the time spent meeting and planning around staff capacity



Consolidate resource data for easier project management



Eliminate the need for manual Excel sheet entry to track resources



Easily find the staff available by role or department

Allocation Dashboard

1

Enter assigned task hours by project

2

View each staffer's allocated hours

Allocation Wizard

View by Task | View by Staff Member

Use the controls to the right to enter in hourly allocation budgets per period. You can sub-total allocations by Task or staffer using the links at the top of the page.

You'll be given the option to update assignments and budgets at the Task level when you click SAVE.

Getting Help
Take a look at the BigTime Knowledgebase for help on this specific page.

Back to Current Period

Task	2021					2022						
	Aug.	Sep.	Oct.	Nov.	Dec.	Jan.	Feb.	Mar.	Apr.	May	Jun.	Jul.
Alexie Wells 160 Hrs. Allocated: 16												
Deploy		8.00		8.00								
Totals: 0 8 0 8 0 0 0 0 0 0 0 0												
Other Projects 0 0 0 0 0 0 0 0 0 0 0 0												
Overall Total 0 8 0 8 0 0 0 0 0 0 0 0												
Ben Mascow (Project Manager) 160 Hrs. Allocated: 24												
Dave Carnie (Senior Engineer) 120 Hrs. Allocated: 16												

Utilization Dashboard Overview

Going a step further than project management, BigTime's utilization dashboard gives a big picture view into operational insights. Broken down by budgeted hours, total input hours, and billable hours, this dashboard allows companies to make adjustments to how efficiently their resources are managed, and create real-time, custom reports on the firm's health.



Gain insights into staff utilization, resource projections, and forecasting



Prevent or decrease bench time by easily spotting areas to improve team productivity



Compare estimated resources with actuals to increase billable time and project ROI

Utilization Dashboard

1

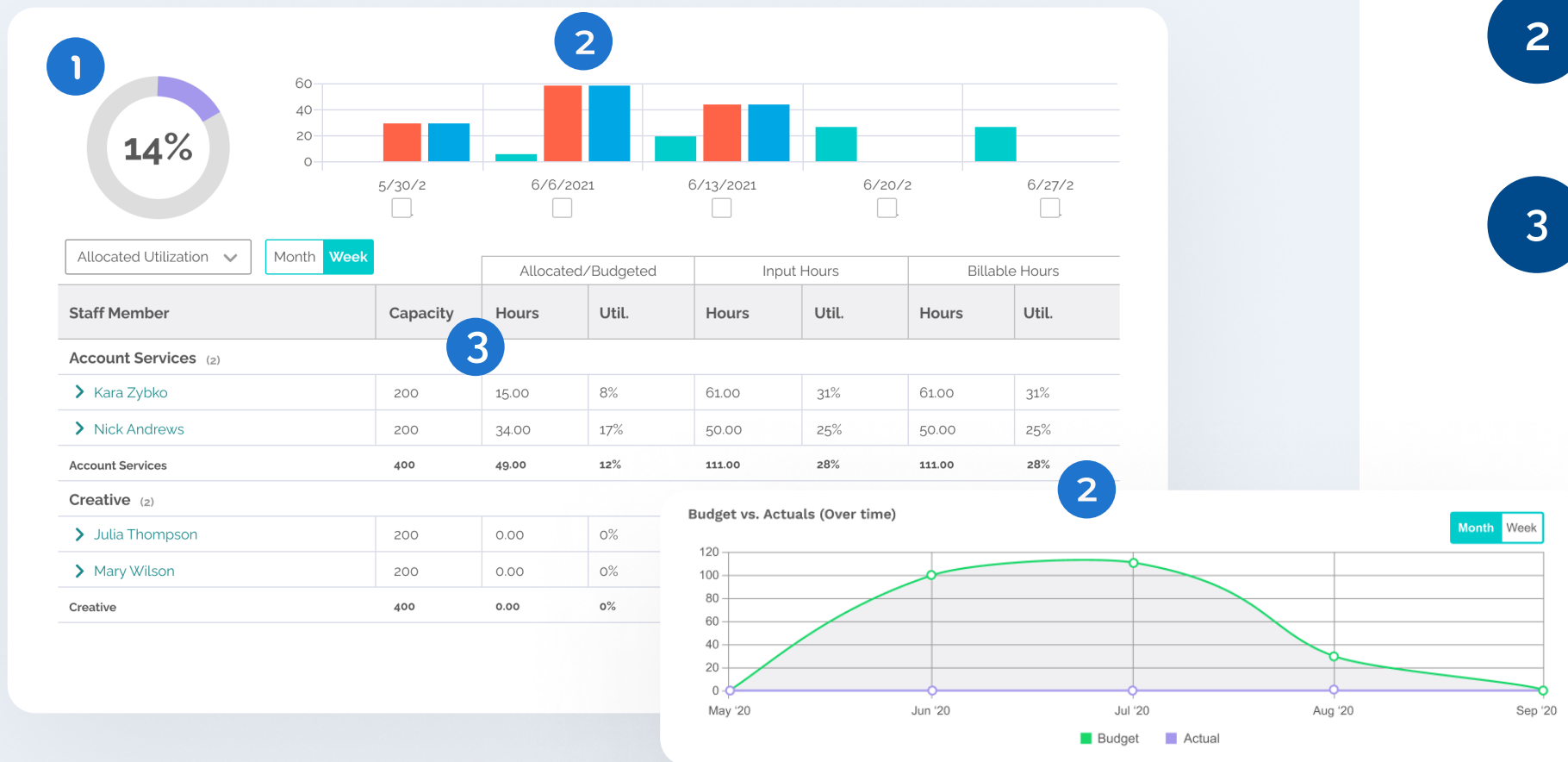
Percent of total resources utilized

2

Quick efficiency display timeline

3

Spot gaps in capacity to adjust



About **BigTime**

BigTime Software powers the greatest professional services firms on the planet to unlock their potential. Our award-winning PSA software amplifies profitability and productivity for accountants, architects, engineers, IT consultants, and contractors.

The services economy needs more than just a timesheet. They need a system that unifies team communication, project/resource management, invoicing and financials. BigTime gives your entire team the tools they need to deliver billable work on time and on budget.

To see why thousands of customers rely on BigTime's cloud-based tools to more easily manage their businesses and effectively plan for tomorrow, request your personalized demo today.

[REQUEST DEMO](#)



1-866-BIGTIME | 311 SOUTH WACKER DRIVE, SUITE 2300, CHICAGO, IL 60606

