

# Building healthier communities together.

## About

Unite California is a coordinated care network of health and social care providers. Partners in the network are connected through a shared technology platform, Unite Us, which enables them to send and receive electronic referrals, address people's social needs, and improve health across communities. Unite California is sponsored by the Community Connections Partnership, led by Kaiser Permanente, CommonSpirit Health, and Blue Shield of California. Additional network sponsors include Adventist Health Lodi Memorial and the City of Long Beach.

## Network partners can:

- Easily refer and connect your clients to local services they need.
- Improve your clients' health and well-being through strengthened collaboration with partners offering a wide array of services.
- Improve organizational capacity through accurate referrals and access to a wealth of data on local service delivery.
- Track the outcomes of all referrals and services delivered for your clients.
- Identify gaps in services to proactively address barriers to care and increase health equity in your community.



To learn more, visit [California.UniteUs.com](https://California.UniteUs.com)

# Who's Involved?

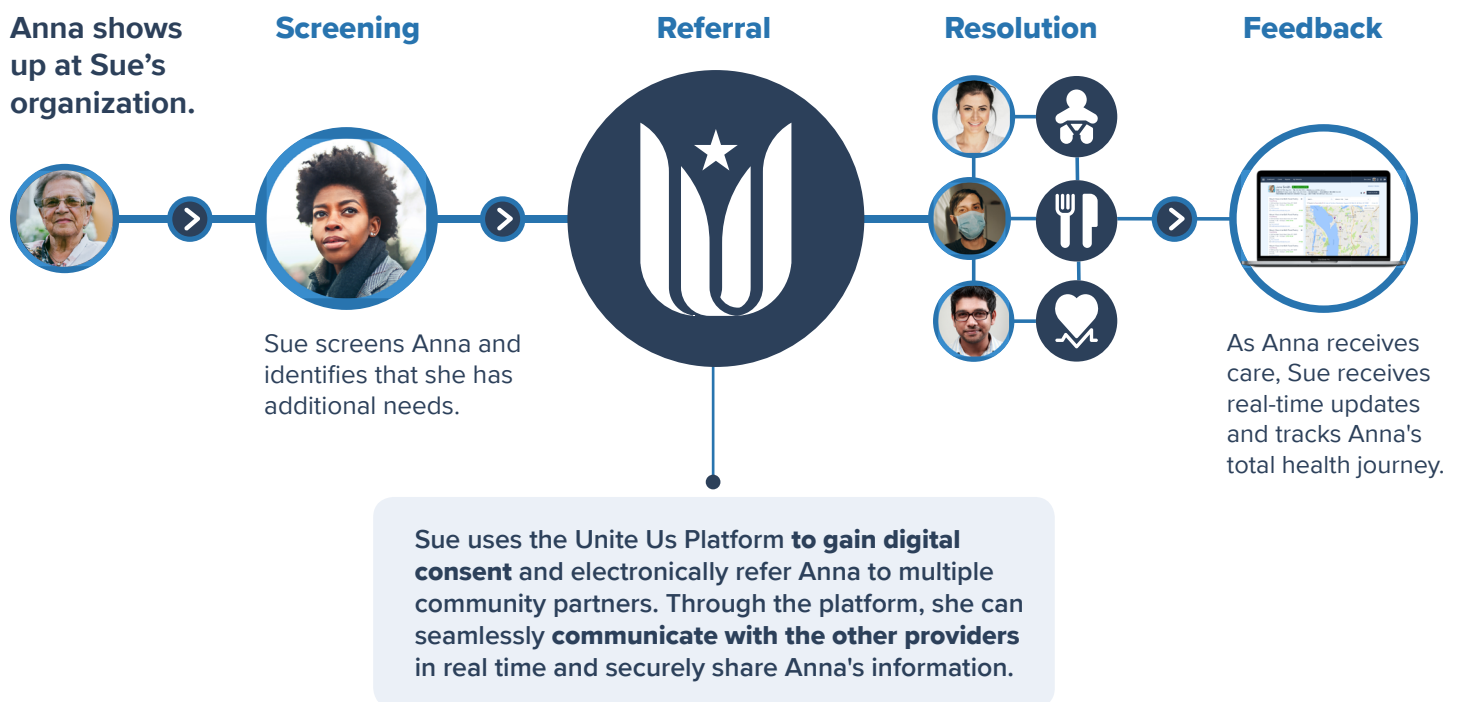
## Sponsors

---



# How does the Unite Us Platform work?

Network partners can include community-based organizations (CBOs), safety net health care providers, health systems, insurers, and other key partners looking to better support people to achieve healthy outcomes. Network partners can choose to participate in whatever way works best for them and can change how they participate in the network over time. The **HIPAA-compliant** platform allows partners to connect their clients with community resources while tracking the status and progress of their clients' referrals and the outcomes of the services provided, **creating an accountable system of care that puts the community first.**



## Connect health and social care

With Unite Us, you can **track outcomes**, **identify** service gaps and at risk populations, and most importantly, **empower members of your community** to take ownership of their own health.

# How to Join



## Attend a Community Strategy Session

Before you join Unite California, it's critical to get to know the platform and learn more about the initiative. Attend a community strategy session with your fellow community partners to learn how the network and Unite Us Platform can fit into your team's work and participate in a community-wide discussion. These meetings shape network implementation and are often planned with a small focus group. A successful strategy session leverages your community's expertise to produce a healthy, thriving network.

---



## Attend Workflow Planning Meetings

These optional meetings ensure you're set up for success once the network launches. Participate in one-on-one phone calls or in-person sessions with our team to talk through your referral workflows and determine what participation can look like at your organization.

---



## Submit Your Partner Registration Form

We will send the Partner Registration Form to your organization to collect details about programs that will receive referrals and their eligibility requirements and to identify staff members that will use the platform.

---



## Attend Software Training

We will send invitations to in-person, virtual, or self-paced software trainings. Our team will guide you through the registration and training process.

---



## Launch

Once the network launches, you can log in, use the network to coordinate care in your community, and begin tracking outcomes for your clients. Unite Us will provide ongoing software training webinars and live user support. You're now officially onboarded!

Join as a partner today at [California.UniteUs.com](https://California.UniteUs.com)