

XenoSelect™

Faster *in vitro* to *in vivo* study translation



A JSR Life Sciences Company

QUICKFACT

V1.0

A diverse, oncogenic *in vitro* screening panel of more than 150 cell lines ready for *in vivo* efficacy studies.

XenoSelect models are proven, oncogenic cell lines which have been well validated both *in vitro* and *in vivo*, enabling a swift transition from *in vitro* screen to *in vivo* efficacy study in a one stop service.

- Large panel of models ready to screen
- Curated, online, searchable database (**XenoBase®**) of:
 - Phenotypic and genotypic data
 - Growth curves
 - Standard of care treatment data
- Stringent quality control of cell lines and study results
- Fast study turnaround, analysis, and interpretation to enable immediate follow on *in vivo* studies

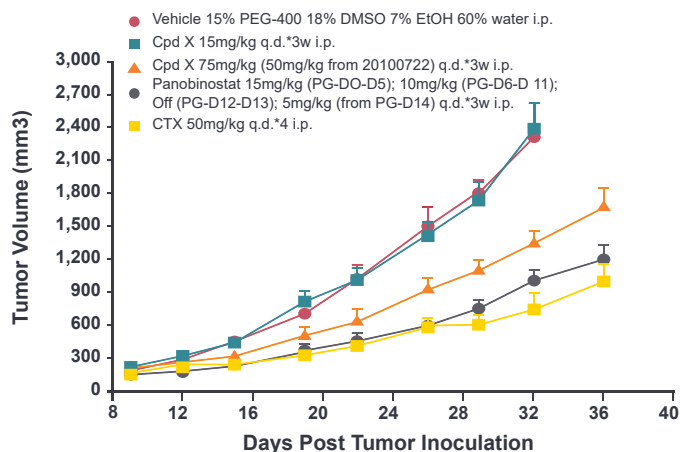
XenoSelect

157 cancer cell lines with corresponding xenograft models

Tissue of Origin	Cell Lines
Blood	48
Lung	39
Colorectum	20
Liver	13
Breast	12
Stomach	12
Ovary & Uterine	12
Pancreas	11
Skin	6
Bladder	4
Prostate	4
Kidney	3
Brain & Nerves	3
Others	15

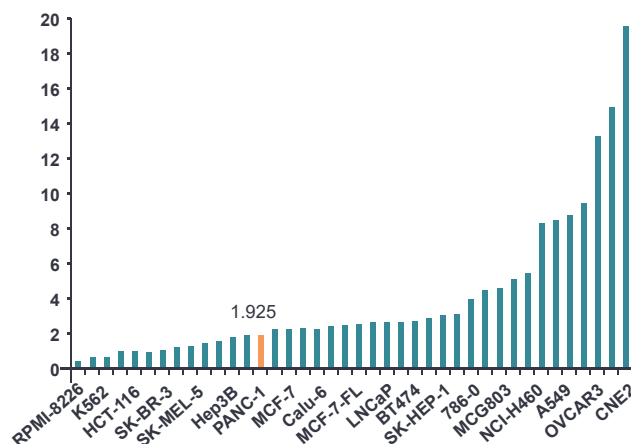
In Vivo

Antitumor Effect of Compound X, CTX, and Panobinostat in the Treatment of Hep G2 Human Liver Cancer Cell Xenograft Model



In Vitro

IC₅₀ of Compound X on XenoSelect Subpanel of 40 Cell Lines



Get in touch



Sales

US: +1 858 622 2900
UK: +44 870 242 2900

busdev@crownbio.com
www.crownbio.com



Science

consultation@crownbio.com

