

OmniPanel™

Why guess which model/disease is best for your study?

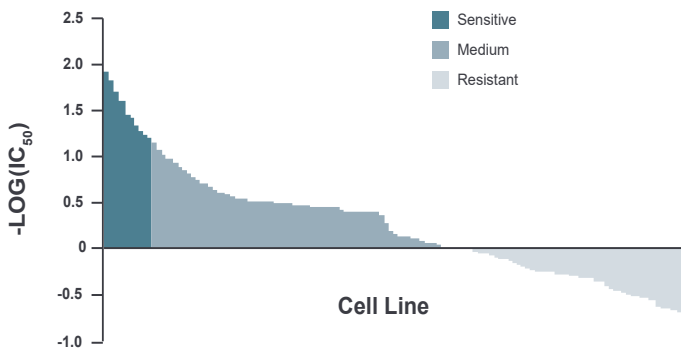
Screen over 500 known tumorigenic cell lines in 2D or 3D spheroid format

OmniPanel cell lines are annotated and well-characterized. STR verified and mycoplasma tested with data available in our searchable online database - **XenoBase**

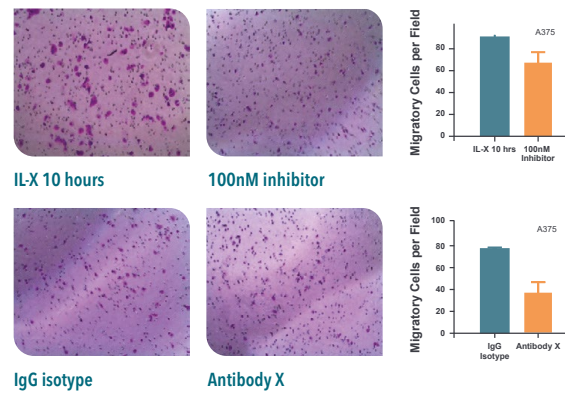
- Multiparameter screening with the Acumen eX3
- Rapid screening, analysis, and reporting
- Evaluate and quantify two-drug combination effects (synergistic, antagonistic, and additive) using the **CrownSyn** bioinformatics service
- Matched and validated in vivo efficacy models
- Functional assay services:

- High throughput cytotoxicity screening
- *In vitro* drug combination studies
- 3D clonogenic assay
- Target validation studies
- Adhesion, migration, and invasion assays
- Angiogenesis assays
- Apoptosis studies
- ADCC and CDC analyses
- Cell cycle analysis
- Pharmacodynamics/Pharmacokinetics analysis.

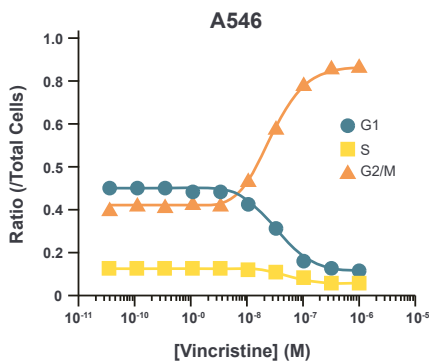
Profile Compounds across OmniPanel



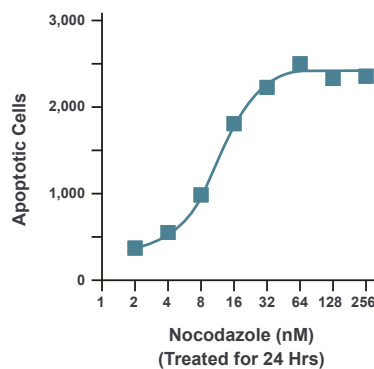
Transwell Invasion Assay



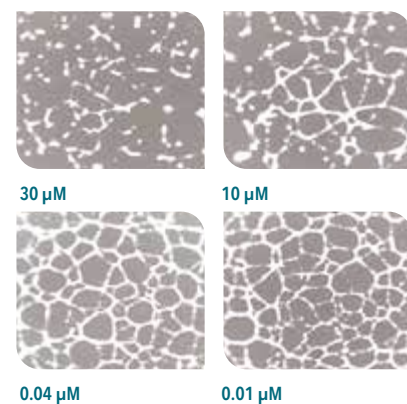
Cell Cycle Analysis



Angiogenesis



Annexin-V/PI in HeLa229



Get in touch



Sales

US: +1 858 622 2900

UK: +44 870 166 6234

busdev@crownbio.com

www.crownbio.com



Science

consultation@crownbio.com

