



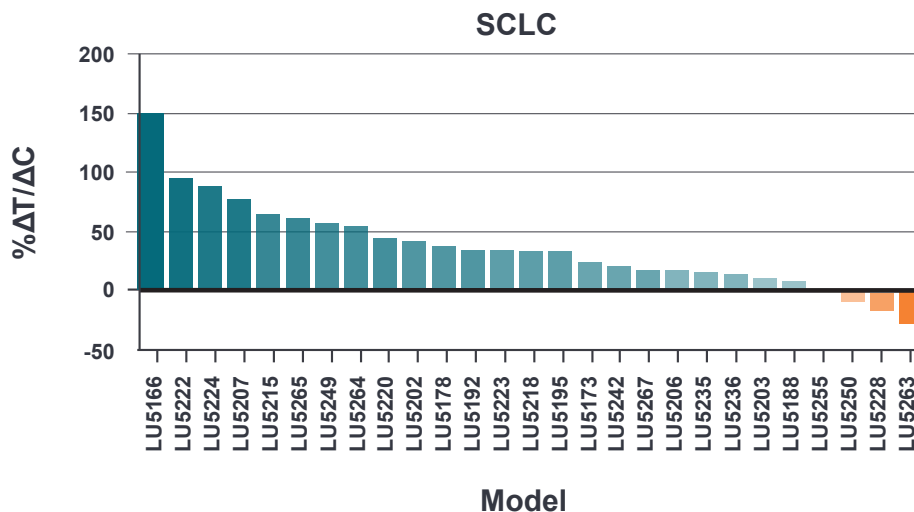
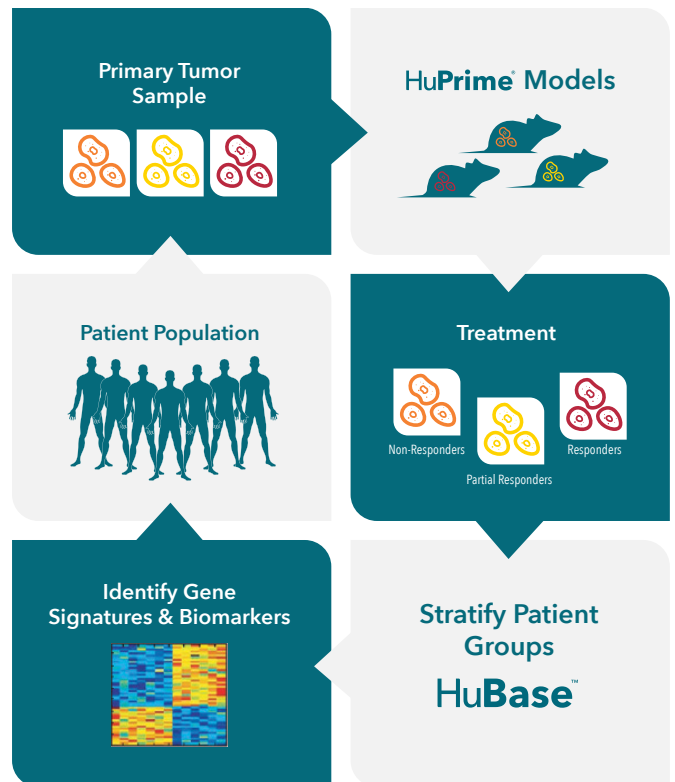
# HuTrial™

Enter the clinic with greater confidence

95% of new agents fail in the clinic with 50% of these due to lack of efficacy. How can you make better decisions before you enter clinical trials, to reduce attrition and costs?

**HuTrials** enable you to perform a surrogate clinical trial in a preclinical setting, stratifying your patient population to identify responders and non-responders to your treatment regimen, and discover and validate biomarkers of response before you enter the clinic.

- Access the world's largest commercial collection of patient-derived xenograft (PDX) models, **HuPrime**, to mimic clinical trials with a clinical readout
- **HuPrime** human surrogate mouse models are reflective of the diversity of genetics, tumor heterogeneity, and response in a patient population
- Select models from >30 cancer types using **HuBase**, our searchable online database of **HuPrime** PDX models
- Multi-center and multi-trial capacity at our sites across the globe
- Identify:
  - Responsive patient populations before you enter the clinic
  - Optimal partner drugs for combination therapies
  - Biomarkers of response for companion diagnostic development



## Get in touch



### Sales

US: +1 858 622 2900  
UK: +44 870 166 6234

busdev@crownbio.com  
www.crownbio.com



### Science

consultation@crownbio.com

