

Get the most from your industrial data

The DataHub® integrates data from a number of data sources, and provides many ways for you to use the data. There is no system integration product for industrial automation on the market that compares to the DataHub for versatility, power, speed, and ease of use.

Connect to multiple data sources

Make real-time, bidirectional connections to OPC UA and Classic clients and servers. Connect any SQL database, Modbus slave, Excel spreadsheet, custom programs, AVEVA Historian, AVEVA Insight, Azure IoT Hub, Google IoT, Amazon IoT Core, any standard MQTT client or broker, and embedded systems.

Integrate all data into a single, unified set

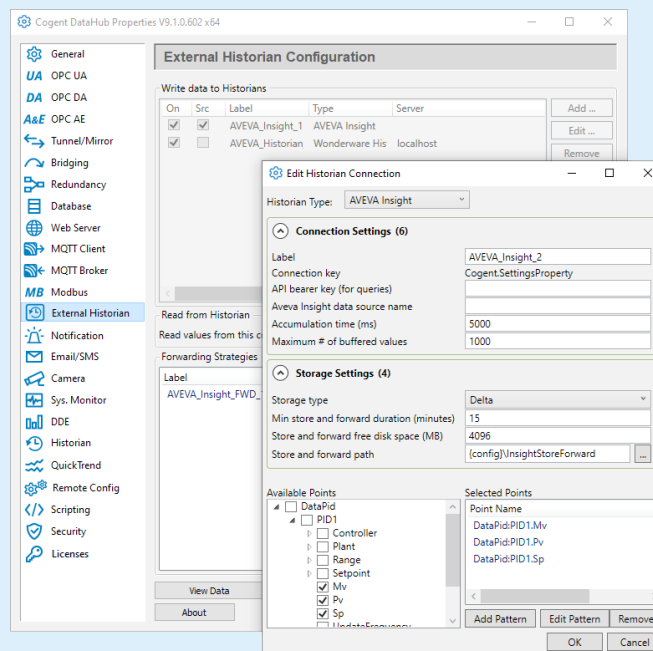
Bring data from all sources and any protocol into a single, unified data set. Any selected subset of this aggregated data can be accessed by clients using a supported protocol: OPC UA, OPC Classic, MQTT, Modbus, DDE, TCP, ODBC, HTTP, XML, and more.

Use your data in any number of ways

- Network OPC servers and clients
- Stream data to AVEVA Insight / Historian
- Log your data to any SQL database
- Generate alarms and notifications
- Securely connect to any IIoT platform
- Trigger actions based on data changes
- Run real-time analysis in Excel

Why choose the DataHub?

- Fast – handles 50,000+ data point changes per second
- Convenient – all features are fully integrated into a single user interface
- Fits in with just about any industrial SCADA system
- Saves time and money through easy configuration and robust performance
- Worldwide user base of over 1,900 customers with over 18,000 installations
- Simple licensing model streamlines system management and deployment
- Connects to SkkyHub™, best-of-breed networking for the Industrial IoT, allowing any combination of in-plant, cloud or hybrid connectivity configuration per dataset



System information

DataHub supports OPC UA (server and client), OPC UA A&C (server and client), OPC UA HDA (server), OPC Classic (DA 3, DA 2, and A&E), as well as Modbus TCP, MQTT, ODBC, DDE, TCP, HTTP and more. It runs on the following operating systems:

- Windows Server 2016
- Windows Server 2012 & R2
- Windows Server 2008 & R2
- Windows Server 2003 & R2 (DataHub v8 only)
- Windows 10 / 8.1 / 7
- Windows XP SP2 (DataHub v8 only)

About Skkyne**t**

Skkyne**t** Cloud Systems, Inc. is a global leader in real-time data communication systems, providing the award-winning SkkyHub™ service, DataHub® middleware, and Embedded Toolkit (ETK) software, which enable secure, real-time data connectivity for industrial automation, Industrial IoT, and Industrie 4.0. For more information, see <https://skkyne.com>.

Skkyne**t**®, DataHub®, SkkyHub™, the Skkyne**t** and DataHub logos are either registered trademarks or trademarks used under license by the Skkyne**t** group of companies (“Skkyne**t**”).