



How to Plan for an Ambiguous Work World

HYBRID WORK ROUNDTABLE

WorkTech **rep•cap**

 **LEVER** **deskp**ass

ESLER
COMPANIES



[According to a recent study by Slack](#)

83% of knowledge workers
*don't want to return to five days a
week* in the office

How People and Technology Leaders are Building a Sustainable Hybrid Work Model




Arleyne Bedo

https://demo.justsift.com/profile/BJ2ZG2WvUHf

Sift

Search by name, job title, team, skill or anything



Arleyne Bedo

Product Researcher

Tycho Manufacturing • Product Management • Experimental

10 years 10 months, started on Jun 1, 2010

MESSAGE

PHONE

EMAIL

TEAM

ORG CHART

Contact Information

Professional Summary

Locations

Skills

Languages

Interests

Education

Experience

Contact Information

Message:

SEND A MESSAGE

Email: abedop9@tychoengineering.com

Office Phone: 409-490-2711

Extension: 55072

Fax Number: (309)2584622

Professional Summary

My work at Tycho is a mix of UX research, market research, and ethnographic studies. My background in Psychology and Statistics first got me interested in research fundamentals; I now love applying those skills to my role in product research.

Professional Summary

My background in Psychology and Statistics first got me interested in research fundamentals; I now love applying those skills to my role in product research.

Languages

Korean

Arabic

Novice

I am just beginning to learn these languages.

Interests


Coin Collecting

Badminton

Cheese making

Rehabing baby squirrels

Team Leader



Karlis Clausewitz

Arleyne Bedo is not in any of your lists.

Agenda

- Introductions | Event Logistics
- Roundtable with our panelists
 - *Hybrid work – what's so different about it?*
 - *The main challenges for hybrid and how to plan for them*
 - *The role of technology in leveling the playing field of communication & collaboration*
- Q&A | Additional resources

Our Panelists

MODERATOR



Mary Ellen Slayter

Founder and CEO | Rep Cap

Before launching a content marketing firm, she served as director of content development at SmartBrief and as a columnist and editor at The Washington Post.



George LaRocque

Founder & Principal Analyst |
WorkTech

An HR leader and tech executive turned market analyst and advisor with 25 years in the HR tech industry.

Our Panelists



Nicole Vasquez

Co-Founder and Chief People Officer | Deskpass

A thought leader and people leader with a focus on humanizing work at Deskpass – a company revolutionizing hybrid work solutions.



Annie Lin

VP of People | Lever

A versatile people leader with expertise in HR, L&D, D&I, and culture, with over a decade of leadership experience across business ops and talent.

Our Panelists



Andrea Bice

Director of HR | Esler
Companies

A strategic HR business partner and trusted advisor to senior leaders, with a stellar track record of leading HR transformation and organizational change.



Sarah Parks

Director of Technology | Esler
Companies

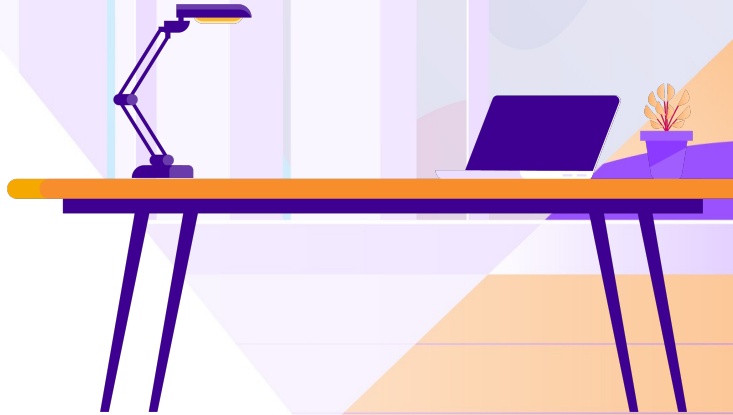
A technology leader with a unique background in HR with deep expertise in implementing and managing company-wide technology initiatives.



Poll | 1

What do you expect to learn
from this webinar?

Hybrid Work – *What's so different about it?*





Poll | 2

What is your organization's
return to office strategy?

Main challenges of hybrid work...

and how to tackle them






Poll | 3

What is your biggest concern
about managing a hybrid
workforce?

The role of technology *in overcoming these challenges*





Q & A

The background features a stylized illustration. On the left, there is a lightbulb icon inside an orange circle. Below it, a person with glasses and a purple shirt is sitting at a desk, working on a laptop. The background is divided into sections of light blue, purple, and orange. The floor is orange with some geometric patterns.

Key Takeaways

Get in touch



Mary Ellen Slayter

LinkedIn | bit.ly/maryellen-LN
Website | repcapitalmedia.com



Sarah Parks

LinkedIn | bit.ly/sarah-LN
Website | esler.com



Nicole Vasquez

LinkedIn | bit.ly/nicole-LN
Website | deskpass.com



Andrea Bice

LinkedIn | bit.ly/andrea-LN
Website | esler.com



Annie Lin

LinkedIn | bit.ly/annie-LN
Website | lever.co



George LaRocque

LinkedIn | bit.ly/george-LN
Website | larocqueinc.com

Get in touch



- Website | justsift.com
- LinkedIn | bit.ly/sift-LN
- Twitter | [@JustSift](https://twitter.com/JustSift)



LEVER

- Website | lever.co
- LinkedIn | bit.ly/lever-LN
- Twitter | [@Lever](https://twitter.com/Lever)

Resources

- Sift | How to Build a Best-in-Class Digital Workplace (bit.ly/sift-eBook)
- Sift | The Pros & Cons of Hybrid Working (bit.ly/sift-blog)
- Deskpass | The Back to Office Playbook (bit.ly/deskpass-eBook)
- Deskpass | How Hybrid Work Can Enhance Work Satisfaction and Productivity (bit.ly/deskpass-blog)
- Lever | Virtual Hiring Tips for 2021 (bit.ly/lever-eBook)



See the modern people
directory in action.

Request a demo of Sift today.

Get started

