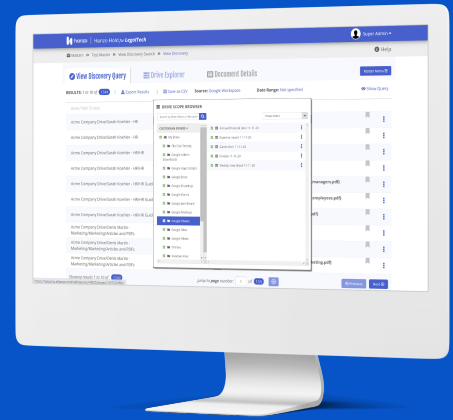


Hanzo Hold For Google Workspace

Make discovery easier and less costly with targeted data control and visibility.



Enterprise-grade Data Management That's Simple Yet Powerful

Corporations globally have adopted Google Workspace, an integrated workspace that's simple to use and powers collaboration and productivity from anywhere. Just like with our support for Slack, with Hanzo Hold for Google Workspace, organizations can easily manage legal holds via Google Vault, unifying the management of collaborative data sources for discovery. Corporations can preserve data in place and have greater visibility of who and what data is on hold. Hanzo also maps drive data to enable targeted collections so you can collect and review precisely the data you need—saving unnecessary and costly review time.

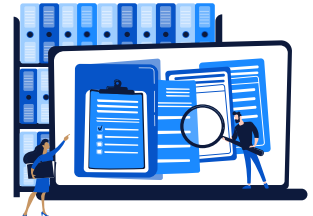
Easy & Defensible Preservation

Hanzo orchestrates custodian-based legal holds via Google Vault, preserving data in place and capturing targeted information.



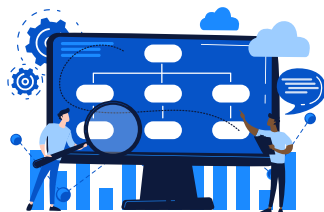
Unparalleled Visibility

Visually mapping Vault and Drive environments to custodian identity provides better understanding into who and what is on hold and where the data located.



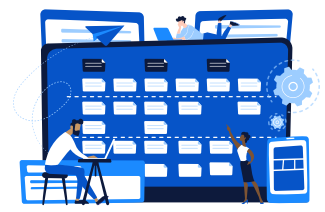
Targeted Collections

Search file metadata including names, dates, drives, and folders, to precisely scope to the Google Drive data you need to collect.



Early Case Assessment + Discovery

Powerful search makes it easy to target content for export or to identify additional collections based on key metadata or file content.



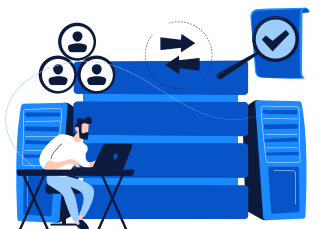
Efficient & Cost Effective

Scalable cloud solution can handle matters of any size and empowers cost-effective preservation and targeted collections.



Review-Ready Export

Pre-processed native and text files along with complete metadata integrity for external review and production.



Uncommonly Good Data Retention and eDiscovery For Google Workspace

Discovery can be complex and confusing. Hanzo Hold makes preserving Google Workspace easy and gives your legal team confidence when responding to eDiscovery requests.



Google Data Map

Your Google workspaces are mapped, helping you identify who and what is on hold. The easy-to-use interface puts you in control of the data associated with your legal hold matters.



Contextualize With Linked Content

Companies with Google Workspace often have Slack as part of their collaboration stack. With Hanzo Hold for Slack, Google Drive uploaded and linked content can be viewed and collected in context at a channel level.



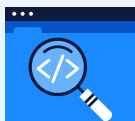
Scope + Preserve

Manage the precise preservation of Google Drive data via Vault by custodian, account name, date range and key metadata. Scope information that is subject to preservation requirements without multiplying your data risk.



Tag + Cull

Easily cull down information and tag responsive Google content for export and/or further review — significantly reducing the volume of data that you need to send out for costly review.



Search

Conduct analysis and early case assessment (ECA) of preserved data with advanced text and metadata search, quickly gaining insight into the data in your Google environment.



Export

Easily package and move data directly from Hanzo into the review platform of your choice to share with your Legal or internal investigation teams.

About Hanzo

Hanzo brings context and a greater understanding of enterprise data to corporate legal and compliance teams by providing in-house control over dynamic and collaborative data sources. This control allows organizations to reduce billions of dollars in risk, litigation, and compliance costs and elevate their corporate legal and regulatory compliance responses. Hanzo's software empowers defensible preservation, targeted collection, and efficient review of dynamic content from enterprise collaboration applications and complex websites. Hanzo is SOC 2® Type 2 certified, demonstrating its commitment to data security and serves large corporations worldwide.



www.hanzo.co