

944

CONTRACT No.

DRN. *A*

D. M. D. CO.  
JAMESTOWN, N. Y.

MATERIAL - STEEL

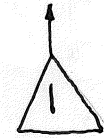
DIE NUMBER

DATE - MAY - 9 - 1940

GAUGE .045"

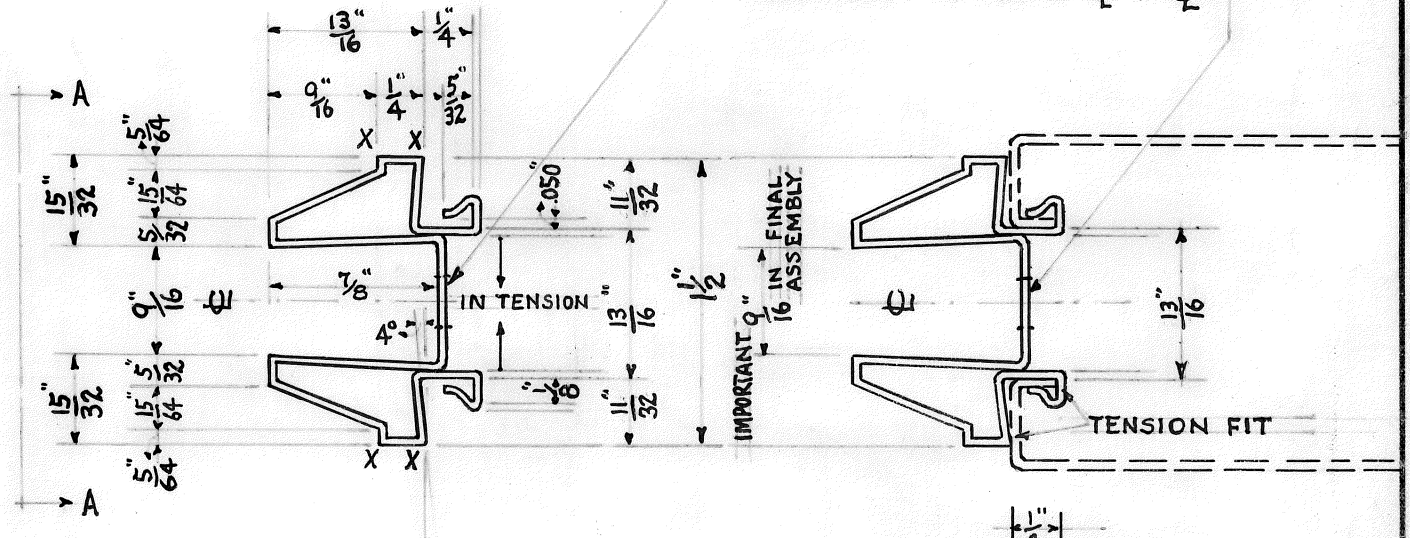
2539

DEV. WIDTH = 6.562

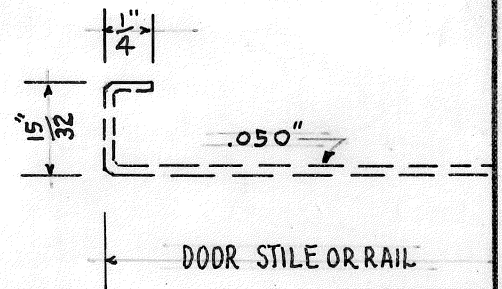


DIE # 10707 FOR "TISHKEN" AUTOMATIC PERFORATING

$\frac{1}{4}$ " DIA. HOLES ON  $\phi$  AS INDICATED  
SPACING TO BE 8"  $\phi$  TO  $\phi$ .

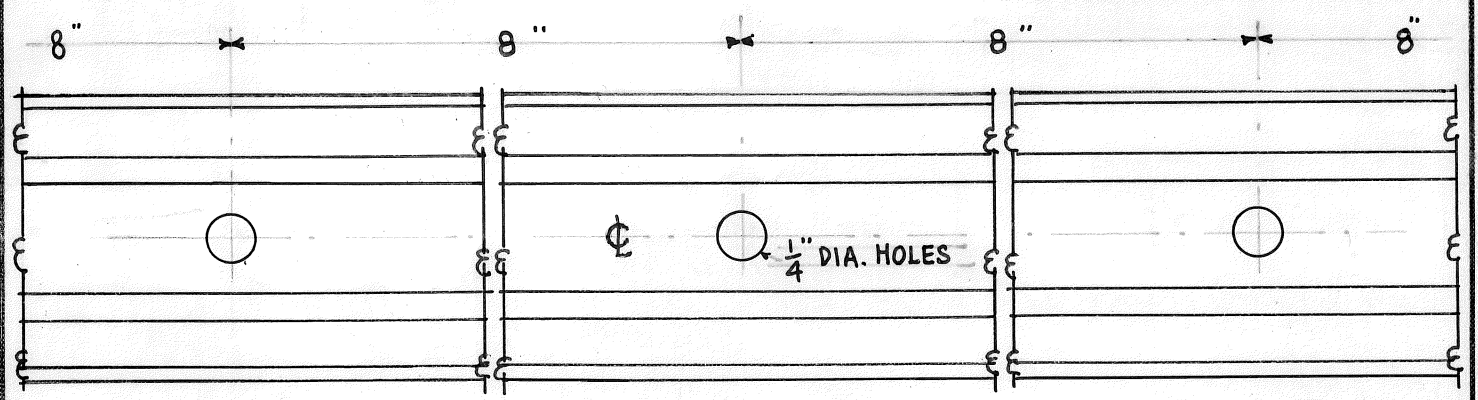


IMPORTANT NOTE:  
CORNERS IDENTIFIED BY "X" MUST  
BE MADE AS SHARP AS POSSIBLE.



DOOR STILE OR RAIL

NOTCHING DIE FOR STILE - #10709



ELEVATION "A-A" SHOWING PERFORATIONS.

REVISIONS		
1	4-26-40	WAS .050 GA.

2539