

MATERIAL HANDLING PARTS / ASSEMBLIES

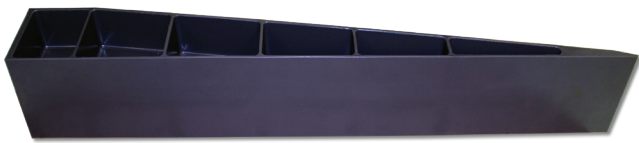
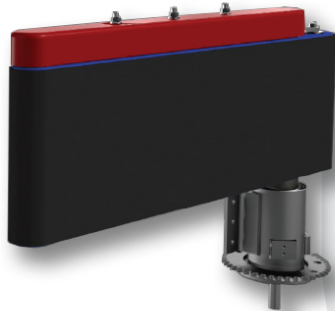
▶ During Globe's extensive on-site consultation process over the years at various parcel and distribution facilities, we've found one of the areas where our capabilities and services have benefited our clients the most is the replacement of currently used and problematic parts and assemblies with better designs using more durable materials.

- ▶ Energy Savings through Reduced Product Weight
- ▶ Significant Noise Reduction
- ▶ Vibration Dampening
- ▶ Durable, Safe Tools for Improved Operational Efficiencies

- ▶ Reduced Downtime
- ▶ Increase Throughput
- ▶ Abrasion & Wear Resistant
- ▶ Extreme Impact Resistance

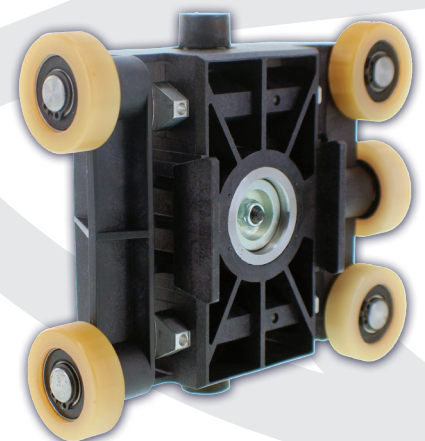
DIVERTER ARMS

- ▶ Belt Conveyor Diverters
- ▶ Paddle Diverters
- ▶ High Speed Diverters
- ▶ Conveyor Centering Guide



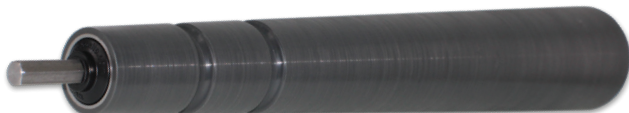
SHOE SORTER PARTS / ASSEMBLIES

- ▶ Shoe Sorter Carriage Assembly
- ▶ Ultra Durable Shoe Sorter Pads
- ▶ Designed to be Easily Replaced
- ▶ Fits a Variety of Conveyor Types



REPLACEMENT WHEELS & ROLLERS

- ▶ Extend the life of your conveyors and sortation equipment by replacing wheels that wear prematurely
- ▶ Bearings will not separate from the wheel because they are cast into the wheel, not "press-fit" like most others
- ▶ Each wheel is precision machined to assure smooth, vibration-free operation
- ▶ We make a variety of wheels for popular sorter systems
- ▶ We make durable tapered rollers for demanding applications



JAM BREAK TOOLS

- ▶ Unjam parcels and keep packages moving using our long-lasting composite-based Jam Break Tools. We offer three different models to handle heavy duty packages, lighter packages and roller conveyors as well. These products give you the reach and traction you need to quickly and safely remove packages without damaging them.

Now Available via  **BDIExpress**

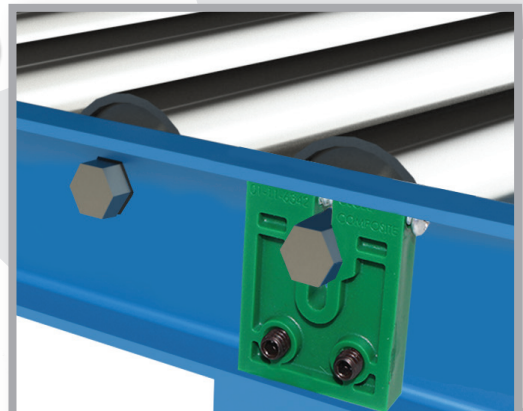
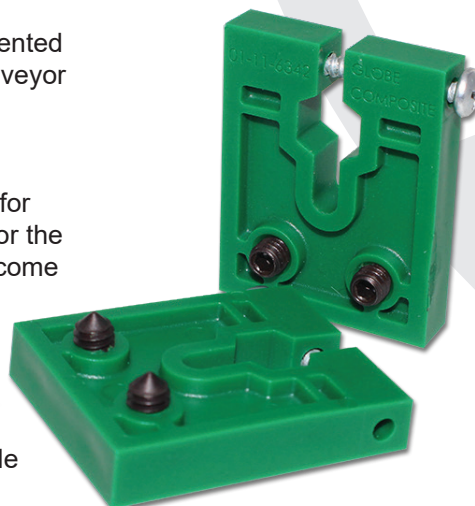


SHAFTKEEPER II®

- ▶ Shaftkeeper II® is our easy-to-install, patented part which will extend the life of your conveyor system, giving you even more years of trouble-free use.

When a roller conveyor has been in use for several years, the side frame openings for the conveyor roller hexagonal shafts can become worn and distorted.

Shaftkeeper II® securely holds the conveyor roller shaft to the side frame, preventing wear on new conveyors. Also allows for improperly sized or shaped side frames and roller shafts to be used.



Securely holds roller shaft to frame