

2021 OFFICIAL BRAZORIA COUNTY **DISASTER GUIDE**



HURRICANE



RISING WATER



CHEMICAL RELEASE



ARE YOU PREPARED?

BRAZORIA COUNTY PREPARED

Citizens of Brazoria County,

As we look back over the last few years, we can see the importance of preparedness, no matter the emergency. Although we can not predict what major disaster event may come our way, we can try our best to be prepared. I encourage everyone to review and update your family emergency plan and have an emergency supply kit ready to go. Most importantly, stay informed with reliable sources that can help you make informed decisions for you and your family. Remembering to have a plan, make a kit, and stay informed could save your life and the lives of your loved ones.

Look through this guide and keep it handy. It is one of those reliable sources of information that can help you know what to do when a disaster occurs. If you or a loved one will need transportation to safety during an emergency event, register NOW for S.T.E.A.R (State of Texas Emergency Assistance Registry) by dialing 2-1-1. You are not obligated, but you are prepared if transportation is needed.

Be Prepared and Stay Safe Brazoria County!



L.M. "Matt" Sebesta, Jr.
Brazoria County Judge



BRAZORIA COUNTY Official Communication and Information

Sign-up for the eNotification System

<https://bit.ly/3wtFZFJ>



[tinyurl.com/BrazoriaCo](https://www.facebook.com/BrazoriaCo)



[@BrazoriaCounty](https://twitter.com/BrazoriaCounty)



[@BrazoriaCounty](https://www.instagram.com/BrazoriaCounty)



[Brazoria County](https://www.youtube.com/BrazoriaCounty)



pio@brazoria-county.com



brazoriacountytx.gov



Download "Ready Brazoria County"
on the App Store or Google Play

24 Hour Emergency Event Hotline Numbers:

979-864-1064

979-388-1064

281-756-1064



Download the Ready Brazoria County App Today!

HELPING TO KEEP YOUR LOVED ONES SAFE

When it comes to an emergency situation, having a plan can help protect you and your loved ones. That is why Brazoria County has developed a mobile app that helps its citizens properly prepare and stay informed during and after a disaster. You will be able to create your family emergency plan. In addition, you will receive the latest updates and necessary information on evacuation routes, shelters, available emergency services and much more, should a disaster strike.

Find peace of mind by ensuring that you and your family are properly prepared. Download the Ready Brazoria County Preparedness App and get the tool and all the information you need in one easy-to-use app.

Key Features:

- ➔ Receive latest alerts and emergency notifications from Brazoria County
- ➔ Find out about the nearest emergency shelters and special services in your area
- ➔ Make your own preparedness plan
- ➔ A library of resources on your phone



The app is free and is available on App Store or Google Play today!



2021 DISASTER GUIDE TABLE OF CONTENTS

GETTING PREPARED

- 2 Prepare Your Home
- 2 Prepare Your Vehicle
- 3 Family Disaster Check List
- 4 Marine and Businesses Prep.
- 5 Prepare for a Flood

IF YOU HAVE YOUR OWN TRANSPORTATION

- 6 Evacuation Plans
- 7 Evacuation Zones
- 8 Evacuating Pets
- 8 Evacuating Livestock
- 9 Emergency Shelters

IF YOU NEED A RIDE OUT OF TOWN

- 10 STEAR Registry (2-1-1)
- 11 Evacuation HUBS in Brazoria County

ALL HAZARD INFORMATION

- 12 Severe Weather
- 12 Flooding
- 13 After a Hazardous Materials Incident
- 14 Downed Power Lines
- 14 Rip Currents
- 14 Heat Safety

VOLUNTEER OPPORTUNITIES

- 15 Skywarn
- 15 Volunteer Opportunities

RETURNING HOME

- 16 Returning Home

Prepare Your Home



- **Buy flood insurance.**
- There is a 30 day waiting period before newly purchased flood insurance goes into effect.
- Install commercial shutters or prepare 5/8 inch plywood panels for your windows.
- Reinforce garage doors so that they are able to withstand high winds. Garage doors are frequently the first feature in a home to fail.
- Trim all dead wood, weak, and overhanging branches from trees as they could damage your or your neighbor's property.

Before you leave

- Move outside items to safety, such as patio furniture, plants, and grills.
- Put valuable documents in waterproof containers and take them with you when you evacuate.
- Turn off electricity at the main circuit breaker or fuse box.
- Turn off gas at the appliances.
- Remove perishable items from your refrigerator and freezer.
- Make a final walk-through inspection before closing the door.
- Close all interior doors in your home.



Brazoria County eNotification System

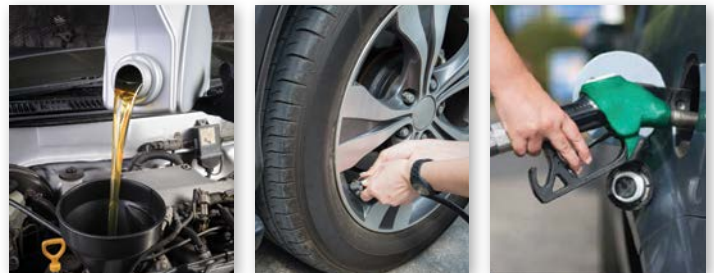
Sign-up to receive emails on upcoming events, projects, road closures, emergency communications, etc. Stay informed!

<https://bit.ly/3wtFZFJ>



Prepare Your Vehicle

- Fill up with fuel before you leave town. It's smart to keep your tank at least half full during the entire hurricane season.
- Check your vehicle's fluid levels and ensure there is adequate coolant in the radiator.
- Check your tire pressure.
- Ensure you have a jack, a lug wrench, and know where they are in the vehicle.
- Carry enough water and non-perishable food for you and your passengers in case you become stranded.
- Have a working flashlight and extra batteries.
- If you are stranded, stay with your vehicle and use emergency flashers. Tie a white cloth on the antenna or door handle and raise the hood.
- Motorists should fill their tanks before evacuating.
- TxDOT works with the private sector to assure fuel availability on designated evacuation routes only.
- TxDOT courtesy vehicles will be patrolling designated evacuation routes for those stranded.



If you're traveling with children be sure to pack items to help keep them entertained

- Reading materials, puzzle, games, coloring books, and electronics with extra chargers and batteries.
- Fun road games like Highway BINGO and I Spy. Go online to find lists and ideas.
- Low sugar snacks and sugar free drinks.
- A change of clothes.



Family Disaster Checklist

Essentials

- Cell phone and charger
- This guide
- Battery-operated radio
- Flashlight
- Extra Batteries
- Cash
- Map of the area

Baby Needs

- Formula, diapers, bottles, medication and powdered milk.

Medical Needs

- Insulin
- Prescription drugs in original containers
- Heart and high blood pressure needs
- Denture needs
- Extra eye glasses
- Contact lenses and supplies
- Doctor's phone numbers

Clothing & Bedding

- Plastic garbage bags, ties
- Sunglasses
- Rain gear
- Sturdy shoes or work boots
- Blankets or sleeping bags
- Complete change of clothing and footwear per person

Cooking Preparation

- Mess kits or paper cups, plates and plastic utensils
- Non-electric can opener, utility knife
- Barbecue for outdoor use only with charcoal and lighter, or sterno stove
- Pot or pan
- Manual can opener
- Barbecue utensils and cooking utensils

Entertainment

- Games & books

Safety

- First Aid Kit (one for your home and one for each car)
- Fire Extinguisher
- Whistle
- Compass

Food

- Minimum 7-day supply of nonperishable food that requires no refrigeration or preparation, and little or no water
- Dry cereal
- Peanut butter
- Canned fruits
- Canned vegetables
- Canned juice
- Ready-to-eat canned meats
- Ready-to-eat soups (not concentrated)
- Quick energy snacks
- Graham crackers

Important documents

- Important telephone numbers
- Record of bank account numbers
- Family records (birth, marriage, death certificates)
- Inventory of household valuables with digital pictures and video
- Copy of will, insurance policies
- Records of credit card account numbers and companies
- Copy of passport, social security cards, and immunization records
- Current Utility Bills

Pet Needs

- Food, leash, collar/ harness, carrier, non-tip food and water containers

Water

- 7 gallons per person, minimum, in a food-grade, plastic container
- Additional water for sanitation

Sanitation

- Disinfectant
- Household chlorine bleach
- Soap, liquid detergent
- Toilet paper, towelettes, paper towels
- Personal hygiene items
- Cloth towels (at least 3)
- Feminine supplies
- Plastic bucket with tight lid
- Plastic garbage bags, ties (for personal sanitation use)
- Hand Sanitizer

Supplies

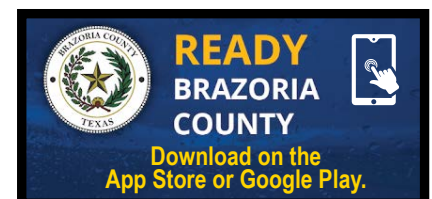
- Insect Repellent
- Sunscreen
- Aluminum Foil
- Paper, Pencil
- Plastic sheeting and tarp
- Medicine dropper
- Needles, thread
- Matches in a waterproof container
- Plastic storage containers
- Ziplock bags

Tools

- Assorted nails, wood screws
- Pliers, screwdriver, hammer
- Paper, Pencil
- Heavy rope
- Tape, duct tape and plumber's tape or strap iron
- Patch kit and can of seal-in-air for tires
- Shut off wrench to turn off household gas & water

You may include

- Family photos, jewelry and select irreplaceable personal items.
- An external Hard Drive



Protecting Your Boat Marine Prep

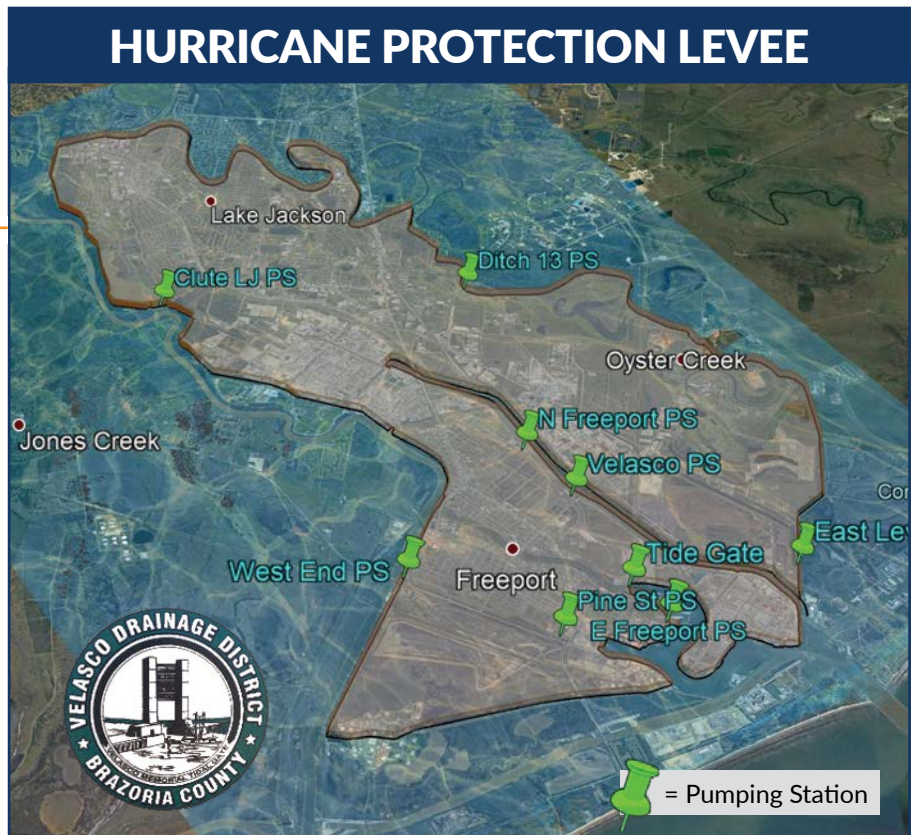
- Check your marina contract for policies and procedures for hurricanes.
- Check with the manufacturer for proper ways to secure your boat during a storm.
- Consider moving arrangements well in advance of an approaching storm.
- Trailerable boats should be removed from the water and securely stored at least 48-hours before a hurricane is expected to make landfall.
- Purchase necessary hurricane materials such as additional mooring lines, crew anchors, fenders, fender boards, chafing gear, and anchors.
- Safe storm moorings should consist of good condition ropes of sufficient diameter and length, with at least three or four substantial anchor points.
- Do not moor parallel to bank. Receding tides often capsize boats in this type of mooring.

Business & Employee Preparation

- Identify and protect vital records. Backup and store key files off site.
- Protect electronic equipment from possible water damage.
- Have extra cash and blank checks in case extra money is needed after the storm.
- Identify a safe room for employees who must remain in the building.
- Develop a 24-hour emergency contact list with phone numbers for employees to check in and receive company information.
- Establish a temporary location for business operations in case your facility is damaged.
- Give employees enough time to secure their homes and families.
- Consider paying employees before they leave to prepare their homes.

What to do if you live in a flood-prone area:

- **Buy flood insurance.**
- Determine if you live behind a levee, find out who owns the levee near you, and do your part to promote levee safety.
- Visualize the impact if your levee is over-topped or breached and your neighborhood is flooded.
- Develop an emergency action plan to follow in case of flooding.
- Take advance precautions to reduce potential flood damage.
- Support funding initiatives for levee improvement projects.



How to prepare for a flood

Be informed

- Know if you are located in a flood-prone area and your flood risk.
- Stay informed through local media, trusted social media sites, the Ready Brazoria County App, city and/or county websites.

If you have pets or livestock

- Consider precautionary evacuation of your animals. Waiting until the last minute could be fatal for them and dangerous for you.
- Move livestock to higher ground.
- Don't leave companion animals behind if you evacuate your home. Tying up animals can cause the animal to suffer unnecessarily and be vulnerable to the elements and possible drowning.
- Prepare an animal emergency kit. The kit should include food, bowl, leash, crate, bed, toys and any medication your animal may need.

Protect your home

- Clear gutters and drains. Keep gutter and drainage systems clear to carry water away from your home.
- Catalog possessions. Using a digital camcorder or camera, create a home inventory for insurance. Store digital files on a USB drive and take it with you during an evacuation event.
- Raise furniture and move expensive items to a safe location. Take irreplaceable items such as photographs and important documents with you if asked to evacuate.



- Anchor your fuel tanks. Unanchored tanks can float, rupture, and release fuel.
- Turn off your electricity at the breaker box and unplug sensitive equipment, such as computers, TV's, etc. before evacuating your home.

Be prepared to evacuate

- If Mandatory Evacuation is issued by officials, leave the area for your safety and the safety of your family. REMEMBER, take your animals with you.
- For your safety, you will not be able to re-enter an evacuated area until area is deemed safe to return by local officials.

Turn around don't drown

- Do not drive into or go near flooded streets or areas.
- Do not go around safety barriers or barricades.



Evacuation Plans

How do I know when to evacuate?

Don't wait! It is NOT safe to wait. Plan to leave early. Mandatory evacuation orders will come from your local officials. Evacuations will be based on zip codes. Please be prepared to leave immediately. See pages 19–21 for specific information pertaining to your city's communication of recommended evacuations.

Should I evacuate?

Do not wait until a mandatory evacuation is issued. Monitor conditions and leave whenever you can. Hurricanes and disasters can be extremely unpredictable and can become much more dangerous in a matter of hours.

Where should I go?

You may evacuate to any city you choose. Brazoria County residents who need shelter should go to Belton, Texas. If you do not have hotel reservations or family you can stay with, you may evacuate to the public shelters. **See map on page 10.**



What route should I take?

There are no mandatory routes you must take when evacuating from your city. In fact, there are several different routes you may take. When weather is good, take your family on an outing to check routes and become familiar with roadways and fuel locations.

The State has designated evacuation routes: SH-36, SH-288, SH-6, I-45, SH-290, HWY-59. If you choose to take an alternate route, essential services such as food, fuel, etc. are not guaranteed. Depending on the strength of the storm, contra-flow lanes might be open on SH-45, I-10, and SH-290 thirty-six (36) hours prior to the arrival of gale force winds. Plan your evacuation routes carefully (having more than one route planned), realizing that contra-flow lanes have priority over all other routes.



When evacuating you should:

- Coordinate your departure with the people who will be traveling with you.
- Notify an out-of-area person of your evacuation plans.
- Make arrangements for your pets.
- Pack your disaster supply kit into your vehicle.
- Secure your home.
- Double check your evacuation route and leave.

Should I carry food and drinks in my car?

Yes! Stopping for food or drinks during a large scale evacuation may significantly delay you in getting to your destination. Some restaurants and stores along hurricane routes may be closed and those that are open are likely to be very crowded. Additionally, once you leave the evacuation route to purchase food or drinks, it may be difficult to re-enter the flow of traffic.

What can I do to help others?

Check on friends, neighbors and assist them if you can to make sure they can evacuate. If you cannot, help them get in touch with the local emergency management office.



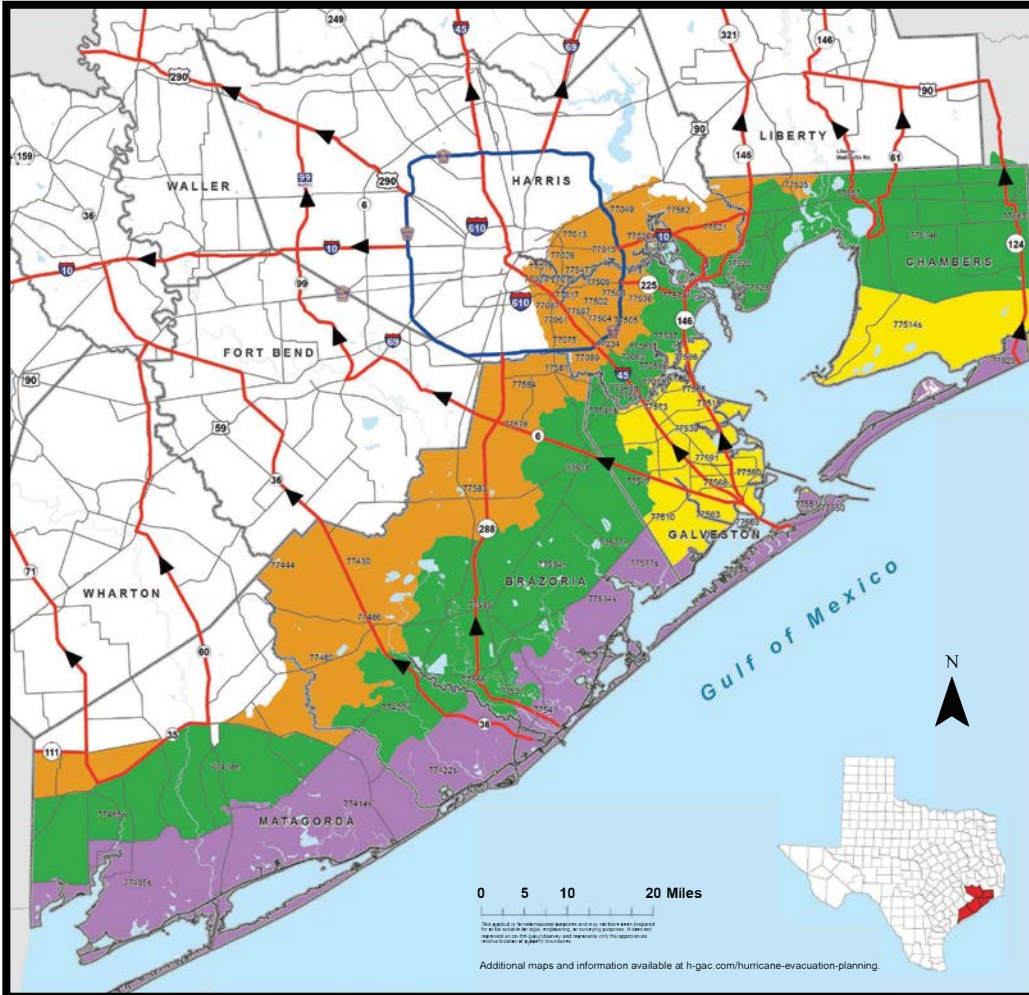
I don't want to evacuate!

Should you choose to stay there will be **NO SHELTERS** in Brazoria County. There will be **NO SERVICES** available to you (sewer, water, electricity, etc). Hospitals will close, ambulances will not run, and police and fire cannot respond until the storm passes.

IF YOU HAVE YOUR OWN TRANSPORTATION

Know your evacuation zone

Mandatory evacuations will be based on zip codes. Be prepared to leave immediately after your zip code is called.



Check COUNTY road conditions online

tinyurl.com/s4s6pdsu



Check STATE road conditions online

drivetexas.org

1-800-452-9292

Brazoria, Chambers, Galveston, Harris, and Matagorda Hurricane Evacuation Zip-Zones Coastal, A, B, C

Route Designation

- Evacuation Corridors
- Evacuation Connections
- Other Roads
- County Boundary

ZIP ZONE COASTAL				
77414s	77422s	77465s	77534s	77541
77550	77551	77554	77563	77577s
77623				
ZIP ZONE A				
77058s	77510	77514s	77518	77539
77563	77565	77568	77573	77586
77590	77591			
ZIP ZONE B				
77058n	77059	77062	77414n	77422n
77465n	77507	77511	77514n	77515
77517	77520	77523	77531	77534n
77546n	77546s	77560	77566	77571
77577n	77597	77598	77665	
ZIP ZONE C				
77011	77012	77013	77015	77017
77023	77029	77034	77049	77061
77075	77087	77089	77430	77444
77480	77486	77502	77503	77504
77505	77506	77521	77530	77535
77536	77547	77562	77578	77581
77583	77584	77587		

Some zip codes are split into north (n) and south (s) for evacuation purposes.



Revision Date: March 19, 2021
 Expiration Date: December 31, 2021
 Map Created by:
 Houston-Galveston Area Council

IF YOU HAVE YOUR OWN TRANSPORTATION

Evacuating Pets



All food and medication must be provided by owner. If you have questions, please contact your local emergency manager (pages 18–20).

- As a general rule, pets will be sheltered separately with the exception of service animals that must stay with their owners.
- If you are evacuating to a hotel, ask about pet policies that might exist. Not all facilities accept animals.
- All animals must be housed in a sturdy plastic or metal cage.
- All food/medication must be provided by owner.

Important pet supplies:

- Medications
- Food and water
- Non-tip food and water containers
- Leash/collar, harness, and carrier
- Records of vaccinations
- Hand sanitizer
- Waste disposal bags
- Training pads
- Towel or blanket



Evacuating Livestock



Where to Go?

If you have friends or family who have a place to board your livestock, that is your best option. Public shelters are temporary, lasting maybe a few days. Dripping Springs Ranch Park and Event Center, located at 1042 Event Center Drive in Dripping Springs, can accommodate cattle, horses, and sheep, swine and goats, high value livestock—horses, show animals, youth animal projects, etc.

When evacuating livestock to Dripping Springs Ranch Park and Event Center, contact the Brazoria County EOC (979) 864-1064 before leaving home to let Hayes County know you're coming. Other shelters for livestock are available throughout the state, but contact information on those sites isn't released until shortly before an evacuation. As this information is received, call the Brazoria County Emergency Management EOC at (979) 864-1064. Evacuation shelters provide only shelter and water. Feed and hay are the owner's responsibility. Evacuation shelters require all equine to have current vaccinations and Coggins test paperwork.

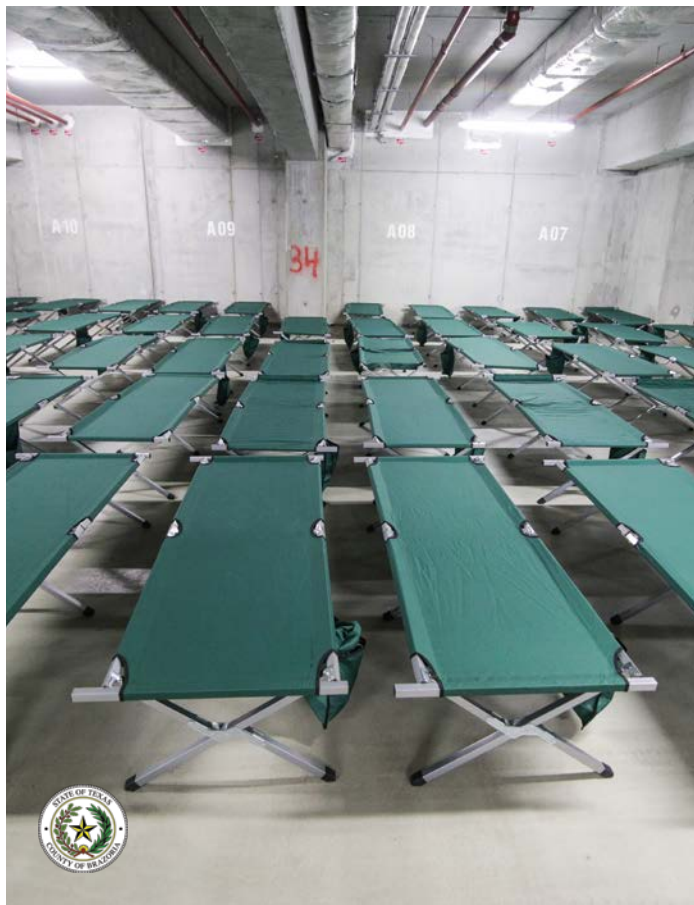
Brazoria County Livestock Guide:

***Contact the Brazoria County
AgriLife Extension Office at
979-864-1566***

What to Expect in an Emergency Shelter

When disasters occur, the county or state may provide a safe refuge in temporary emergency shelters. These shelters can be located in schools, churches, office buildings or other facilities. General population shelters are stocked with basic need essentials, such as food, water, and a warm place to sleep. Keep in mind, a shelter will not be able to provide the same level of comforts of home or a hotel. Shelters can be noisy, crowded, boring, short-staffed, and provide very little privacy. If you are able, staying with friends or relatives is a better choice. Items to Bring to an Emergency Shelter:

- Bring identification
- Important /insurance papers
- Bring blankets/sleeping bags, pillows
- Bring baby supplies – food, diapers, formula, medication, etc.
- Bring cards/games/books to pass the hours
- Flashlights with extra batteries
- Cell phone and charger
- Important phone numbers, i.e. family members, doctor, etc.
- Prescription and emergency medication in original containers
- Medical equipment, i.e. oxygen/wheelchair
- Extra clothing
- Specialty snacks and juices for dietary needs
- Hygiene supplies
- Shower Shoes
- Basic snacks
- Folding chairs
- Other comfort items as needed
- Pets **ONLY** in carriers
- Pet leashes, food bowls
- Pet health records
- No alcohol, or illegal drugs are allowed in public shelters



Don't forget your animals supplies and necessities!

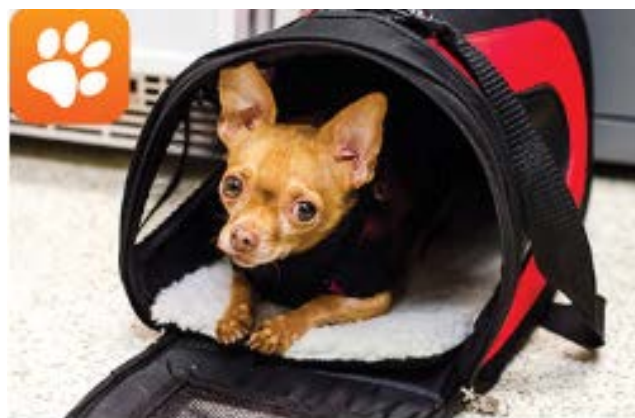


Photo provided by ASPCA

IF YOU NEED A RIDE OUT OF TOWN



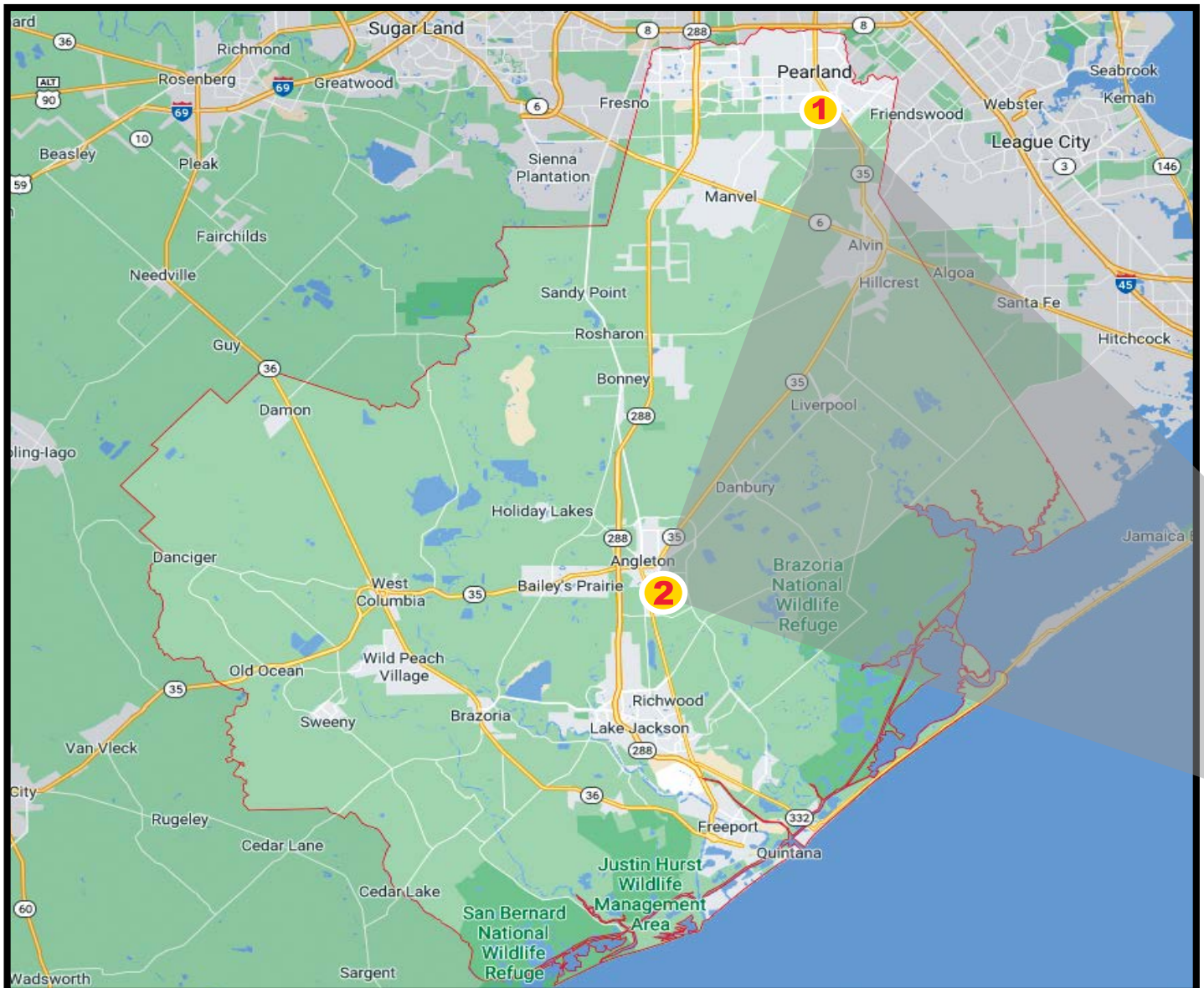
S.T.E.A.R. REGISTRY

State of Texas Emergency Assistance Registry

If you need a ride to safety, during any emergency register with STEAR today!

This service is for people who cannot drive themselves and have no other transportation during an emergency event.

Please register by dialing 2-1-1 or visit:
<http://stear.tdem.texas.gov>



Evacuation HUBS in Brazoria County



What should I bring with me?

- Medications for at least 10 days.
- Driver's license or state issued picture ID.
- Sleeping pads or air mattresses.
- Blankets or a sleeping bag for each person.
- Robe & shower shoes with toiletries.
- Books, cards, games and QUIET toys for children.
- Snacks
- Five days worth of clothing
- No more than two pieces of luggage and one carry-on bag per person.
- **NO Alcoholic beverages, or illegal drugs are allowed in HUBs or on buses.**

Will my pet ride with me?

- HUB Coordinators have final say over all pet transports.
- As a general rule, pets will be transported with the owner. However, if a situation dictates, they may be transported in a separate vehicle.

Public transportation and animal evacuations

- Only non-aggressive household pets will be permitted. No reptiles or farm animals.
- Up to two pets per household will be allowed on the bus. If you feel you **MUST** take more than two pets, please contact your city's local emergency manager **BEFORE** an evacuation is called.
- All animals **MUST** be transported and housed in a sturdy plastic or metal cage/transport device. No cardboard or partly enclosed devices will be allowed.
- Animals must remain secured in the travel device at **ALL TIMES** while on the bus and at the HUB.
- Pets must have current rabies shot records.
- Owners are responsible for supplying food and water for their animals.
- We are not liable for any losses or injuries to your animals while being evacuated.

What is a HUB?

A HUB is a meeting location for residents who need public transportation during an evacuation. Residents will be checked in and bused to an evacuation shelter.

HUB Locations

1 PEARLAND
Recreation Center
4141 Bailey Road
Pearland, TX

2 ANGLETON
Fairgrounds
901 S Downing Rd
Angleton, TX

If you need assistance getting to one of these HUBS, contact your emergency coordinator.

“See Pages 18-20”

Severe Weather

Thunderstorms

A thunderstorm is contains lightning caused by unstable atmospheric conditions. Thunderstorms may occur by themselves, in clusters, or in lines. So, it is possible for several thunderstorms to affect one location in the course of a few hours.

Severe thunderstorms can bring heavy rains, strong winds, hail, lightning, and tornadoes. To protect yourself in a severe thunderstorm, get inside a sturdy building away from windows and stay tuned to a battery-operated radio for weather information.

Know the Difference

Warning	Weather hazard is occurring, imminent or likely. Poses a threat to life/property. Take Protective Action.
Watch	Risk of weather hazard in the near future. Could pose a threat to life/property. Have a Plan of Action.
Advisory	Weather hazard is occurring, imminent, or likely. Could cause significant inconvenience. Use Caution.

Lightning

Do's and Don'ts

Do

Go Inside When You Hear Thunder or See Lightning!

Find a Sturdy House, Building, Car With A Hard-Top Roof

Stay Indoors For at Least 30 Minutes After You Last Hear Thunder



Don't

Retreat to Dugouts, Sheds, Pavilions, Picnic Shelters or Other Small Structures

Use or Touch Electronics, Outlets, or Corded Phones

Go Under or Near Tall Trees, Swim or Be Near Water, Be Near Metal Objects or Windows



weather.gov/lightning

Flooding

Floods are the most common natural disaster in the United States. Failing to evacuate flooded areas or entering flood waters can lead to injury or death. If you are under a flood warning:

- Find safe shelter right away
- Do not walk, swim or drive through flood waters—Turn Around, Don't Drown!
- Six inches of moving water can knock you down, and one foot of moving water can sweep your vehicle away
- Stay off bridges over fast-moving water

Depending on the type of flooding:

- Evacuate if told to do so
- Move to higher ground or a higher floor
- Stay where you are



Visit www.ready.gov/floods for more information.

After a Hazardous Materials Incident

Hazardous materials can include flammable and combustible substances, poisons, and radioactive or explosive materials. Emergencies can happen at any time where you live, work or play. You are at risk when hazardous materials are released in harmful amounts.

If you are within an area where hazardous materials are released, move to a safe location immediately, preferably upwind from the release, and notify emergency personnel.

During a hazardous material emergency

- Act quickly and move to a safe area upwind if possible
- Notify emergency personnel about the hazardous material
- Follow specific instructions from local authorities or emergency personnel

If you are within the release area and asked to shelter in place, follow specific instructions from local authorities and emergency personnel. You might be

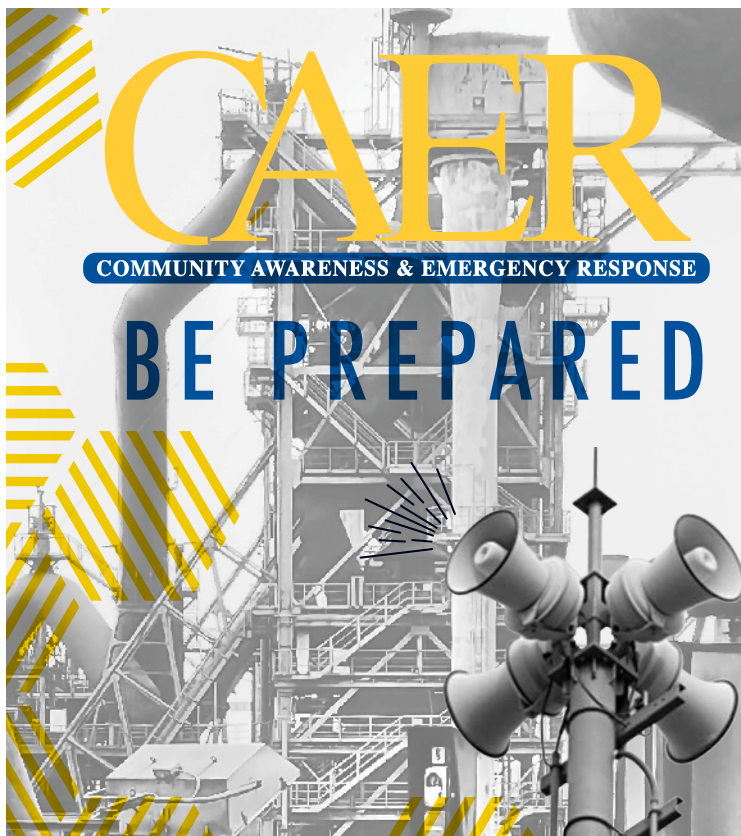


instructed to do the following:

- Go inside your home, vehicle or building
- Close all windows and doors
- Turn off furnace, cooking appliances and air conditioners

Remember:

- Act quickly
- Notify emergency personnel
- Follow all specific safety instructions



FAST FACTS

Brazosport CAER was the first industrial alert program of its kind in the nation.

The CAER ALERT SYSTEM consists of 15 strategically placed sirens in the Brazosport area that are tested each Monday at 12:10 pm for 45 seconds.

CAER sirens can be heard for a one-mile radius. They stand 50-feet high and are radio controlled.

CAER operates a 24-hour telephone alert system called CodeRED Mobile Alert. This system is geo-aware and sends alerts to registered phones in affected areas in the event of an industrial emergency. Download the app or go to brazosportcaer.com to register.

The community can call 979-238-CAER (2237) with questions.



www.BRAZOSPORTCAER.com
979.238.CAER (2237)

Downed Power Lines

Always assume that a fallen power line is live, and follow these guidelines:

- Call 9-1-1 immediately to report a fallen power line
- Avoid touching the downed line with your hand or an object, such as a stick, broom or pole
- Avoid driving over a fallen power line
- Keep children and pets away from fallen electric lines



- Avoid touching anything, such as a car, object or equipment, or anyone who is in contact with a fallen power line

RIP CURRENTS
Know your options

Rip currents are powerful currents of water moving away from shore. They can sweep even the strongest swimmer away from shore. If at all possible, swim near a lifeguard.

IF CAUGHT IN A RIP CURRENT

- ◆ Relax, rip currents don't pull you under.
- ◆ Don't swim against the current.
- ◆ Swim out of the current, then to shore.
- ◆ If you can't escape, float or tread water.
- ◆ If you need help, yell or wave for assistance.

SAFETY

- ◆ Know how to swim.
- ◆ Never swim alone.
- ◆ If in doubt, don't go out.
- ◆ Swim near a lifeguard.

More information about rip currents can be found at the following websites:
weather.gov/safety/ripcurrent/
usla.org



Practice HEAT SAFETY Wherever You Are

Heat related deaths are preventable. Protect yourself and others from the impacts of heat waves.

Job Sites
Stay hydrated and take breaks in the shade as often as possible.

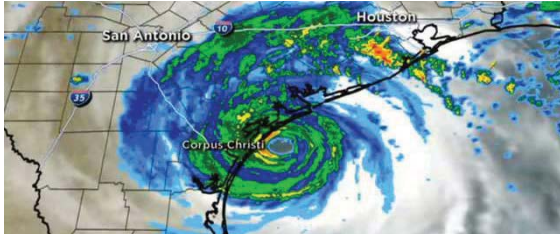
Indoors
Check up on the elderly, sick and those without AC.

Vehicles
Never leave kids or pets unattended - LOOK before you LOCK

Outdoors
Limit strenuous outdoor activities, find shade, and stay hydrated.

VOLUNTEER OPPORTUNITIES

AMATEUR RADIO



When your family's lives may be at risk...
What communication system do YOU want to have?

Amateur Radio Emergency Service

Make friends and enjoy the challenge!

- Get your Ham Radio License
- Practice with on-the-air "nets" or networks
- Participate in public events
- Volunteer and help others!
- Communication for disaster preparedness
- Getting the message through for your friends and your family

Website: www.brazoriacountyares.org
Contact: info@brazoriacountyares.org



HOW CAN I HELP?

BRAZORIA COUNTY CITIZEN CORPS NEEDS YOU!

In large emergencies, first responders can be quickly overwhelmed. Citizens on scene may need to take action to help save lives.

Citizen Corps will train you to prepare yourself, your family, and your neighbors for disasters.

The Brazoria County Citizen Corps has several key missions:

- Initial Neighborhood Response
- Staff Evacuation Hubs for an evacuation
- Help staff Emergency Management Call Center
- Staff shelters during disasters
- And MUCH MORE!

ALL TRAINING IS FREE!

Positions for everyone! Great for groups and organizations! Sign up today!



See our calendar at:
www.homelandpreparedness.org
or contact Homeland Preparedness
Project at:
info@homelandpreparedness.org
Or call 281-844-3653.

If you are interested in volunteering and/or supporting Salvation Army, Freeport Corps give them a call at (979) 233-5420, or drop by at 1618 N. Avenue J, Freeport, TX



Storm Spotter Program

The National Weather Service issues forecasts and warnings for the protection of life and property. Severe weather reports from weather spotters are critical for the issuance of accurate and timely warnings and thus contribute to public safety. Each year the NWS offers numerous weather spotter training sessions. Spotters are trained at how to report hazards such as hail, damaging winds, funnel clouds, tornadoes and flooding and how to identify cloud formations that indicate severe thunderstorms. The training is free, runs about two hours and is great for anyone who is interested in weather and wants to provide information directly to the National Weather Service. For more information on this program and to register for a course in your area visit www.weather.gov/SKYWARN.





Safety Tips for Your Return

Just as you had a plan to evacuate, you will want to be prepared to return home after officials give the all clear.

- Find out if it is safe to enter your community or neighborhood. Follow advice of local authorities.
- Check city and/or county websites.
- Reliable social media sites. Ex. Brazoria County FB and/or Twitter [tinyurl.com/BrazoriaCo](https://twitter.com/BrazoriaCo).
- Have cash with you. ATM's may not work and stores may not be able to accept credit or debit cards.
- Bring supplies such as flashlights, batteries, bottled water and nonperishable foods in case utilities are out.
- Create back-up communication plans with family and friends in case you are unable to call from affected area.
- Plan for delays when traveling. Bring extra food, water, pillows, blankets and other items. Keep the fuel tank of your vehicle as full as possible.
- Carry a road map to help you route.
- Understand that recovery takes time. Focus on the positive and have patience.
- If possible, leave children and pets with a relative or friend. If not, keep them away from hazards and floodwater.
- Beware of rodents, snakes, insects and other animals that may be on your property or in your home.

Items to bring when returning home

- Government-issued photo ID and proof of address
- Important phone numbers
- Bottled water and non-perishable foods
- First aid kits
- Cleanser/hand cleaning gel for personal use
- Hygiene products and toilet paper
- Insect repellent and sunscreen
- Long sleeved shirts, long pants, sturdy waterproof boots and works gloves
- Flashlight, portable radio and extra batteries
- Cameras for photos of damage for insurance claims
- Tarp(s) to cover roof damage and control leaks

WELL WATER TESTING AFTER A FLOOD

Water wells that received flood water may be contaminated with bacteria, which can make you sick. Sources of bacteria may include a septic system and fecal matter from wildlife and domestic animals. Additionally, chemical contaminants can enter a well making the water unsafe to drink.

Well water can be tested at the Brazoria County Water Lab located at 409 East Orange, Angleton, Texas 77515. Water sample must be collected in a container from the lab.

Generator Safety

When power has not been restored many people turn to generators for temporary power. Before using a portable generator know the risks to insure safe and proper use.

- Never attach a generator directly to the electrical system of a structure (home, RV trailer, etc.) unless a qualified electrician has properly installed the generator with a transfer switch.
- Always plug electrical appliances directly into the generator using the manufacturer's supplied cords or extension cords that are grounded (3-pronged).
- Inspect the cords to make sure they are fully intact and not damaged.
- Do not overload a generator.
- Make sure a generator is properly grounded.
- Keep a generator dry.

What to do after a flood

Returning home after a flood can be dangerous and difficult. Use caution when entering a disaster area, and be ready to deal with the conditions at hand.

- Return home only when authorities say it is safe.
- Be aware of areas where floodwaters have receded and watch out for debris, snakes, fire ants, alligators, etc. Flood waters often erode roads and walkways.
- Do not wade through flood waters.
- Do not attempt to drive through areas that are still flooded.
- Avoid standing water as it may be electrically charged from underground or downed power lines.
- Photograph damage to your property for insurance purposes.



www.ready.gov/floods

Separating Your Debris

Debris should be placed curbside, without blocking the roadway or storm drains.

NO PICKUP ZONE
Any debris placed from the sidewalk toward your property will not be picked up.

DEBRIS SEPARATION
Separate debris into the six categories shown below.

DO NOT STACK OR LEAN
Placing debris near or on trees, poles, or other structures makes removal difficult. This includes fire hydrants and meters.

UNSURE WHERE TO PLACE DEBRIS?
If you don't have a sidewalk, ditch, or utility line in front of your house, place debris at the edge of your property before the curb.

Normal Household Trash
Normal household trash and bagged debris of any kind will not be picked up with disaster debris. You should continue to follow your normal garbage removal schedule.

VEGETATIVE DEBRIS

- Leaves (do not put in bags)
- Logs
- Plants
- Tree branches

CONSTRUCTION & DEMOLITION DEBRIS

- Building materials
- Carpet
- Drywall
- Furniture
- Lumber
- Mattresses
- Plumbing

APPLIANCES & WHITE GOODS


- Air conditioners
- Dishwashers
- Freezers
- Refrigerators
- Stoves
- Washers, dryers
- Water heaters

ELECTRONICS

- Computers
- Radios
- Stereos
- Televisions
- Other devices with a cord

HOUSEHOLD HAZARDOUS WASTE

- Cleaning supplies
- Batteries
- Lawn chemicals
- Oils
- Oil-based paints and stains
- Pesticides



For more information: brazoriacountytx.gov



COMMUNICATION INFORMATION

If your city is not listed, use the County numbers.



[tinyurl.com/BrazoriaCo](https://www.tinyurl.com/BrazoriaCo)



@BrazoriaCounty



@BrazoriaCounty



Brazoria County



brazoriacountytx.gov



Search for "Ready Brazoria County" on the App Store or Google Play

Brazoria County



Emergency Management
pio@brazoria-county.com
24 Hour Hotline 979-864-1064
979-388-1064
281-756-1064
www.brazoriacountytx.gov

Angleton



Emergency Manager 979-849-2383
City Hall 979-849-4364
City Manager's Office 979-849-4364
Mayor's Office 979-849-4364
Fire 979-849-1265
www.angleton.tx.us

CAER



979-238-CAER (2237)
www.brazosportcaer.com

Bailey's Prairie

Emergency Manager 979-849-0134
Mayor 979-849-0134
Village Hall 979-849-0134
www.baileysprairie.org

United Way of Brazoria County



979-849-9402
www.uwbc.org

Bonney

Emergency Manager/Mayor 281-595-2269
City Hall 281-595-2269
www.bonneytexas.gov

Salvation Army



1-979-233-5420

Brazoria



Emergency Manager 979-798-2489
City Hall 979-798-2489
City Manager 979-798-2489
24 hr. Emergency Info. Line 979-798-9131
www.cityofbrazoria.org

Alvin

Emergency Manager 281-388-4363
City Hall 281-388-4200
Public Works 281-388-4325
City Manager's Office 281-388-4230
Mayor's Office 281-388-4275
Cable Access Channel Channel 16
RADIO KACC 89.7 FM
www.alvin-tx.gov

Brookside Village

Emergency Management 281-485-3048
Police Chief 281-485-4844
Mayor 281-485-3048
City Hall 281-485-3048
www.brooksidevillage-tx.org

Clute



Emergency Management 979-265-9653
 Police Department 24 Hr Info 979-265-6194
 Clute City Hall 979-265-2541
 City Manager. 979-265-2541
www.ci.clute.tx.us

Danbury

Emergency Manager 979-264-9482
 Mayor 979-264-9482
 City Secretary 979-922-1551 x5
 City Hall/Police Dept. 979-922-1551
 Utility Dept. 979-549-3129
 Fire Department 979-922-1176
 Police Dispatch 979-964-2392

Freeport



Emergency Manager 979-233-2111
 Information Message 979-233-KNOW
 City Hall. 979-233-3526
 Police 979-239-1211
www.freeport.tx.us

Hillcrest



Emergency Management 832-602-9958
 Monday - Friday 8 AM - 5 PM. 281-756-0577
 City Office Not Open Following An Emergency
 Mayor 281-748-7149
 City Marshal 832-221-5961

Holiday Lakes



Mon Wed Thurs & Fri 1 - 5 PM, Tues 1 - 7 PM
 Mayor 979.849.1136
 Police Chief. 979-849-3163
 City Secretary 979-849-1136
www.holidaylakestexas.com

Iowa Colony



Emergency Manager 281-369-3444
 City Hall. 281-369-2471
 Mayor 281-369-2471
 City Secretary 281-369-2471
 Police Chief. 281-369-3444
www.cityofiowacolony.com

Jones Creek



Marshal/Emergency Mgr. 979-292-6393
 Mayor 979-233-2700
 Fire Chief 979-201-3594
 City Admin. 979-233-2700
 Marshal's Dept 979-233-3091
 City Hall 979-233-1826
www.villageofjonescreektexas.com

Lake Jackson



Emergency Manager 979-415-2500
 City Hall 979-415-2400
 Police Department 979-415-2700
 Cable Access Channel Channel 16
www.lakejackson-tx.gov

Liverpool



Emergency Manager 281-581-2342
 Mayor 281-581-2342
 City Secretary 281-581-2342
 Police Chief. 281-581-2233
www.cityofliverpooltexas.com

Manvel



Mayor 281-489-0630
 City Manager/EMC 281-489-0630
 Police Chief 281-489-1212
 Fire Marshal/Deputy EMC 281-489-0630
 Fire Chief 281-692-0279
 EMS Director. 281-489-6144
www.cityofmanvel.com

Oyster Creek



Emergency Manager 979-233-8481
 Police Department 979-233-8481
 City Administrator 979-233-0243
 Mayor/City Hall 979-233-0243
 Fire Department 979-233-8481
www.cityofyoystercreek.org



Sign-up for the eNotification System
<https://bit.ly/3wtFZFJ>



Pearland



Emergency Manager 281-997-4648
 City Hall 281-652-1600
 Mayor's Office 281-652-1654
 City Manager 281-652-1663
 Police Department 281-997-4100
 Cable Access Channel Channel 16/99 UVerse
www.pearlandtx.gov

Quintana

Mon. - Fri. 8 AM- 4:30 PM 979-233-0848
 Mayor 979-233-4609
 Emergency Manager 979-373-7255
 Water Emergency 979-233-4281
www.quintanatx.org

Richwood



Mayor 979-265-2082
 City Manager 979-265-2082
 Emergency Manager 979-265-8157
 City Hall 979-265-2082
www.richwoodtx.gov

Surfside

Police Chief 979-233-1531 ext 109
 Emergency Coordinator 979-239-1151
 City Hall 979-233-1531
 Fire Department 979-233-5926
www.surfsidetx.org

Sweeny



Emergency Manager 979-482-4617
 City Manager/Asst. EMC 979-548-3321
 EOC (Only open during Emergency Situations)
 979-548-4541
 Information Line 979-548-3330
 After Hours 979-548-3111
www.sweenytx.gov

West Columbia



Emergency Manager 979-345-5121
 City Mgr./Emergency Mgr. 979-345-3123
 City Hall 979-345-3123
 EOC 979-345-1900
 Police Department 979-345-5121
 CEMS Director 979-345-2390
 Fire Chief 979-345-3416
www.westcolumbiatx.org

Other Useful Numbers

School Districts and Colleges

Alvin ISD 281-388-1130
www.alvinisd.net
 Angleton ISD 979-864-8000
www.angletonisd.net
 Brazosport ISD 979-730-7000
www.brazosportisd.net
 Columbia-Brazoria ISD 979-799-1700
www.cbisd.com
 Damon ISD 979-742-3457
www.damonisd.net
 Danbury ISD 979-922-1218
www.danburyisd.org
 Pearland ISD 281-485-3203
www.pearlandisd.org
 Sweeny ISD 979-491-8000
www.sweenyisd.org
 Alvin Community College 281-756-3500
www.alvincollege.edu
 Brazosport College 979-230-3000
www.brazosport.edu
 U of H - Pearland Campus 281-212-1700
www.uhcl.edu/pearland

Hospitals

UTMB Health Angleton Campus 979-849-7721
 132 E. Hospital Drive Angleton, TX 77515
 CHI St. Luke's Brazosport Medical Ctr . . 979-297-4411
 100 Medical Drive Lake Jackson, TX 77566
 Sweeny Community Hospital 979-548-3311
 305 N. McKinney St Sweeny, TX 77480
 Memorial Hermann Pearland 713-413-5000
 16100 South Freeway Pearland, TX 77584
 Pearland Medical Center 713-770-7000
 11100 Shadow Creek Parkway Pearland, TX 77584



NOTES

ATLANTIC HURRICANE NAMES FOR 2021

Ana	Grace	Mindy	Teresa
Bill	Henri	Nicholas	Victor
Claudette	Ida	Odette	Wanda
Danny	Julian	Peter	
Elsa	Kate	Rose	
Fred	Larry	Sam	



NON-PROFIT ORGANIZATION
U.S. POSTAGE PAID
ANGLETON, TX
PERMIT NO. 38

*****ECRWSEDDM****

Local Postal Customer

BRAZORIA COUNTY



HURRICANE PREPAREDNESS VIDEOS



COMING IN JUNE



The 2021 Hurricane and Disaster Preparedness EXPO is **CANCELED** due to Novel Coronavirus

The EXPO is scheduled to return in 2022