



**PORT  
FREEPORT is  
GROWING**

**Bigger, Deeper, Wider**

# About Port Freeport

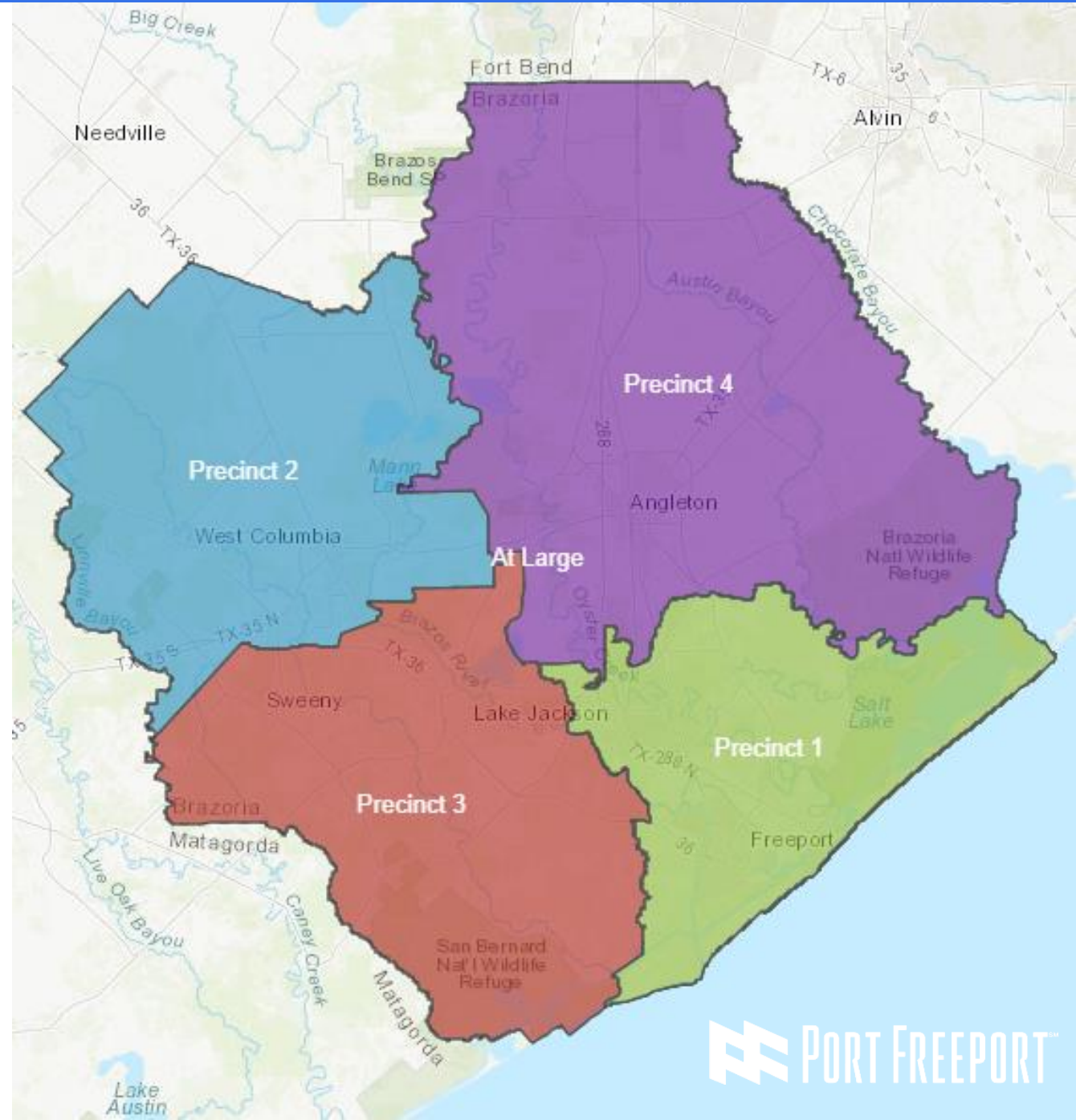
- Government entity created by voters in 1925
- Local sponsor for the Freeport Harbor Channel and engages with the U.S. Army Corps of Engineers
- Significant responsibilities include investment in infrastructure and cargo handling improvements and the associated financing





# About Port Freeport

- The Port Freeport Commission oversees growth and innovation
- Six Commissioners elected to six-year terms by Navigation District voters
- Commissioners serve in staggered terms, with two Commissioners elected/re-elected every two years



# Port Freeport Commissioners



**John Hoss**  
Chairman



**Rudy Santos**  
Vice Chairman



**Dan Croft**  
Secretary



**Rob Giesecke**  
Asst. Secretary



**Ravi Singhania**  
Commissioner



**Shane Pirtle**  
Commissioner



# Port Freeport U.S. Rankings

- 6<sup>th</sup> in Chemicals
- 15<sup>th</sup> in Foreign Waterborne Tonnage
- 26<sup>th</sup> in Containers

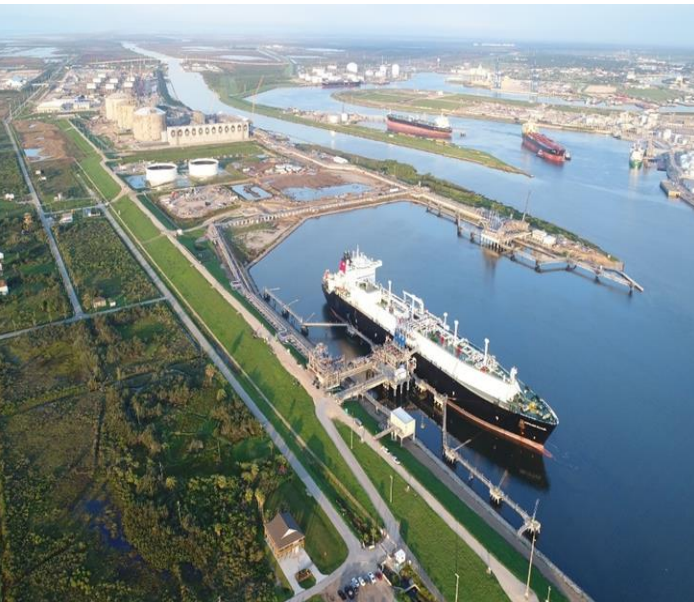
Source: Port Freeport Analysis of U.S. Census Bureau 2020





# Port-wide Vessels and Tonnage

- 1,136 vessel calls in 2020
  - Up 10.3% from 2019
- Approximately 30.1 million tons of cargo transported annually
- Vessel calls forecasted to increase with completion of improvement projects



# Port Freeport Supports Business

Public dock facilities  
managed by the Port





# Port Freeport Supports Business

International shipping lines  
calling the public facilities



# Port Freeport Supports Industry





# Phillips 66

- **Liquified Petroleum Gas export facility capable of exporting 200,000 barrels per day**
- **Commenced operations in November 2016**
- **220 vessels per year**





# Freeport LNG Update

- Liquifaction Trains 1, 2, and 3 all in commercial operations
- 2.2 BCF gas production capacity per day
- Up to 6 vessels per month per Train
- 2 Berths



# Port Freeport is Growing Exponentially

## Statewide Economic Impact

Total Jobs

2012 EIS\*



2016 EIS\*



2019 EIS\*



Total Income



Total Economic Impact



\* Texas A&M Transportation Institution (TTI) Study

# Port Freeport Nationwide Economic Impact

Total Jobs



2019 EIS\*

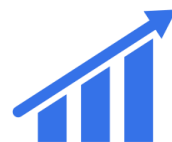
279,780

Total Federal Tax Revenues



\$5.4 Billion

Total Economic Impact



\$149 Billion

\* Texas A&M Transportation Institution (TTI) Study



# Strategic Initiatives Supporting Port's Vision

- Freeport Harbor Channel deepening and widening
- Buildout of the Port's Container Handling Facilities
- Development of rail-served warehousing and distribution facilities
- Supporting development of an efficient transportation corridor from Freeport to Texas markets and the heart of the United States



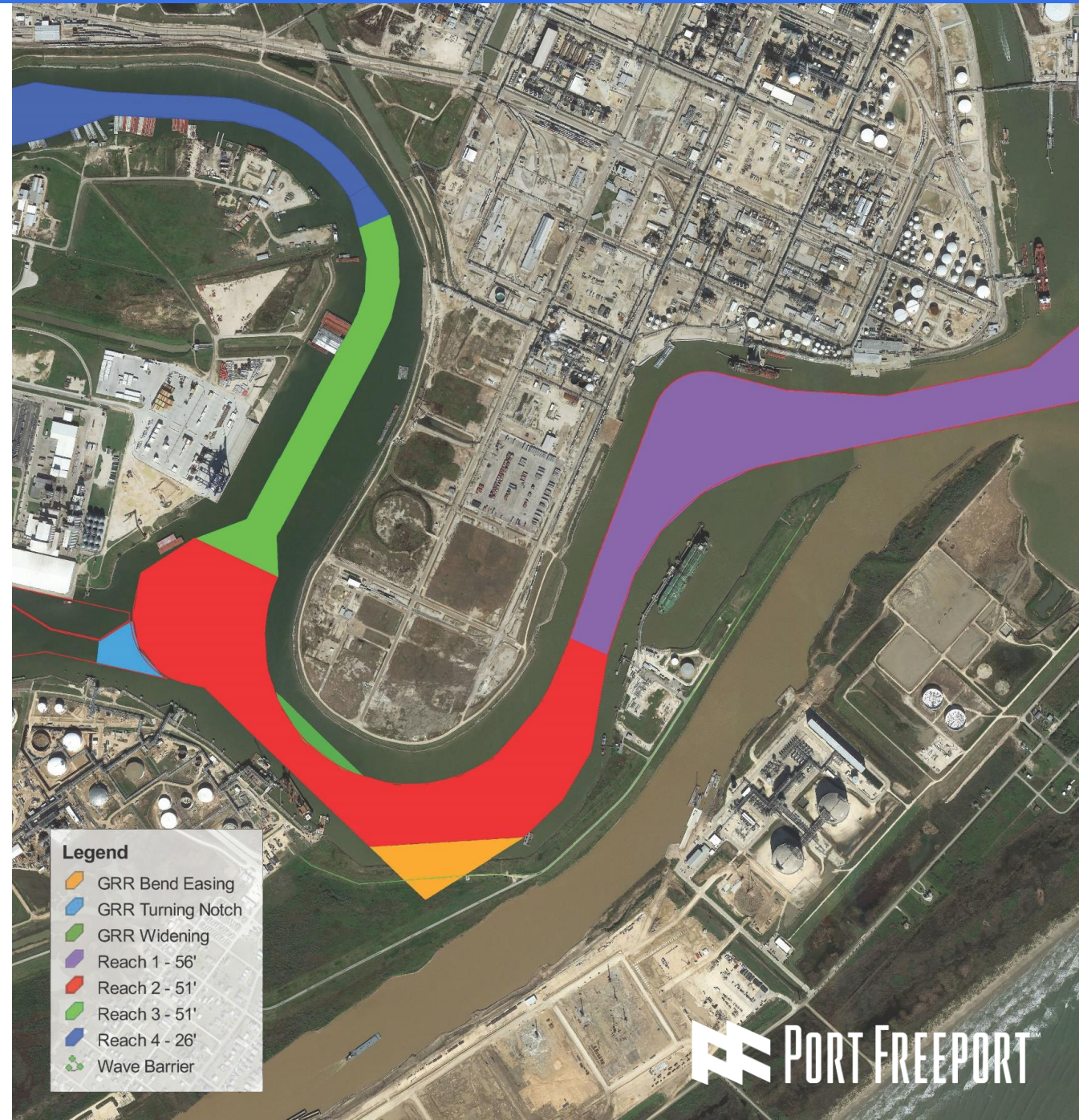


# Freeport Harbor Channel Improvement Project

## Deepens the channel

- Current depth – 46 feet MLLW
- Project depth – 51 to 56 feet MLLW

Port Freeport will be the  
Deepest Port in Texas



# Freeport Harbor Channel Improvement Project

Federal cost-shared  
project authorized by  
Congress in 2014

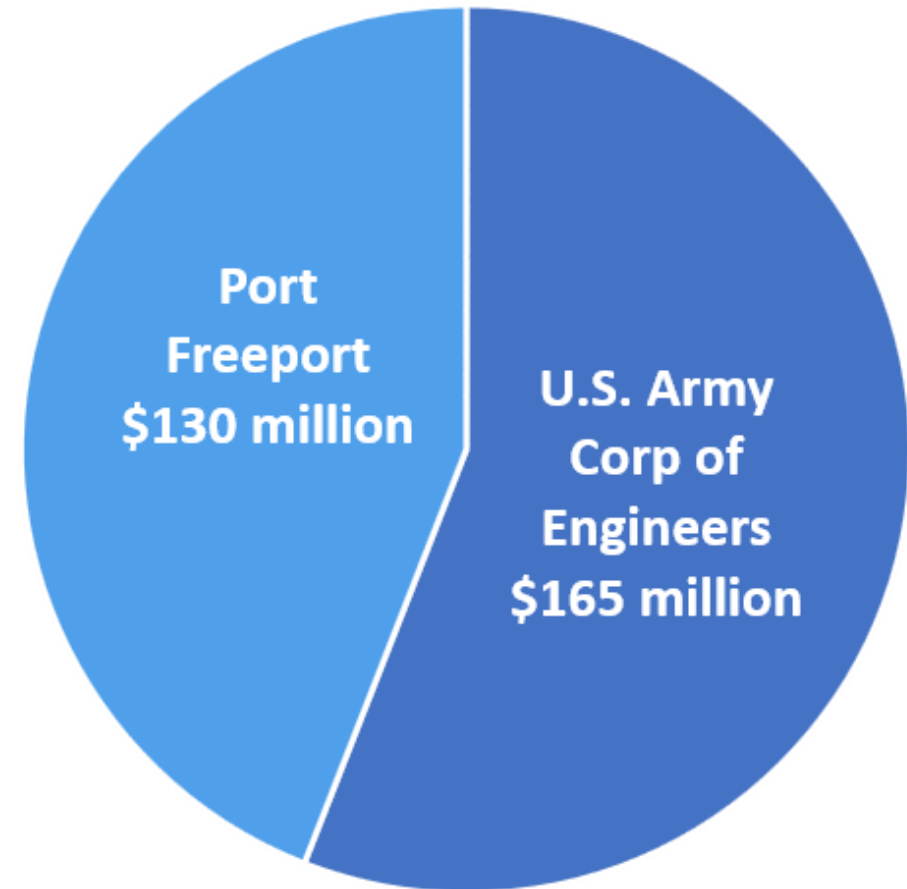
## USACE FY2020 Work Plan

- New start designation
- \$19 million federal funding

## USACE FY2021 Work Plan

- \$24.9 million federal funding

Total Cost to Construct  
\$295 Million





# Bond Package Approved by Voters May 2018

## Port Freeport – Proposition A



FOR



AGAINST

"THE ISSUANCE OF \$130,000,000 OF BONDS FOR THE PURPOSE OF IMPROVING, CONSTRUCTING, OR DEVELOPING THE FREEPORT HARBOR CHANNEL IMPROVEMENT PROJECT, AND THE LEVYING OF THE TAX IN PAYMENT THEREOF"

**\$35 million issued in June 2019**

**\$39 million issued in January 2021**



# Port Freeport's 2016-2018 2019 Tax Rate - \$0.0401

Maintenance and Operations (M&O)\* – 3 cents



Debt Service\*\* – 1 cent



*\*M&O – Annual operating expenses*  
*\*\*Debt Service – Annual principal and interest for voter-approved bonds.*

# Proposed Tax Rate with Bond Package - \$0.0401

Maintenance and Operations (M&O)\* – 1 cent



Debt Service\*\* – 3 cents



# We Broke Ground!

- 130+ special guests and members of the community attended our Groundbreaking Ceremony on April 8, 2021
- This event commemorated a historic milestone: the commencement of dredging on the Freeport Harbor Channel Improvement Project





# Freeport Harbor Channel Improvement Project Groundbreaking Ceremony

## April 8, 2021





# Freeport Harbor Channel Improvement Project Groundbreaking Ceremony

## April 8, 2021



# Freeport Harbor Channel Improvement Project Groundbreaking Ceremony

## April 8, 2021



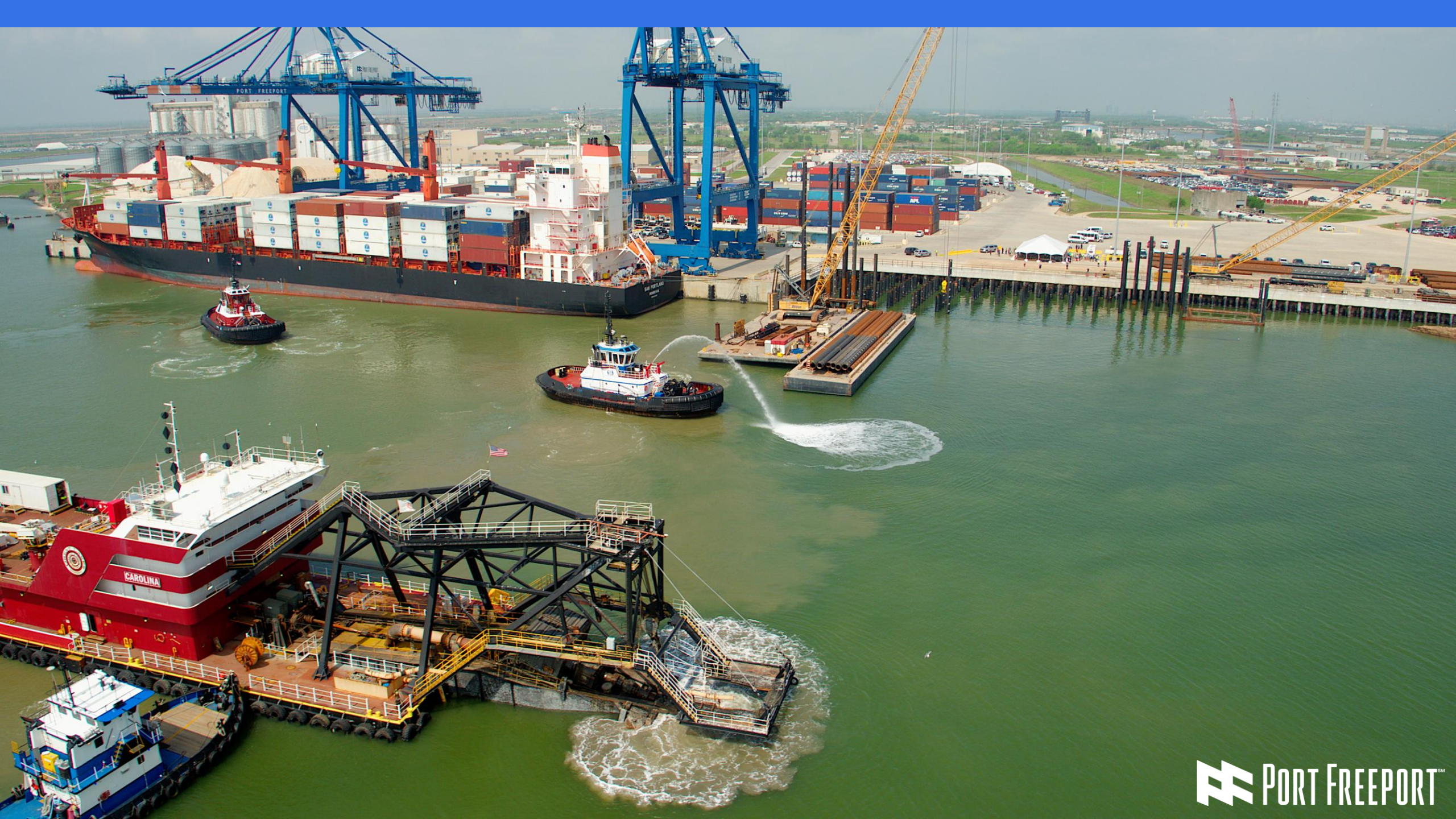


# Freeport Harbor Channel Improvement Project Groundbreaking Ceremony

## April 8, 2021









# Dredge Placement Area – January 2021





# Dredge Placement Area – April 2021





# Dredge Placement Area – April 2021







### Reach 3



Estimate: \$19 M USACE

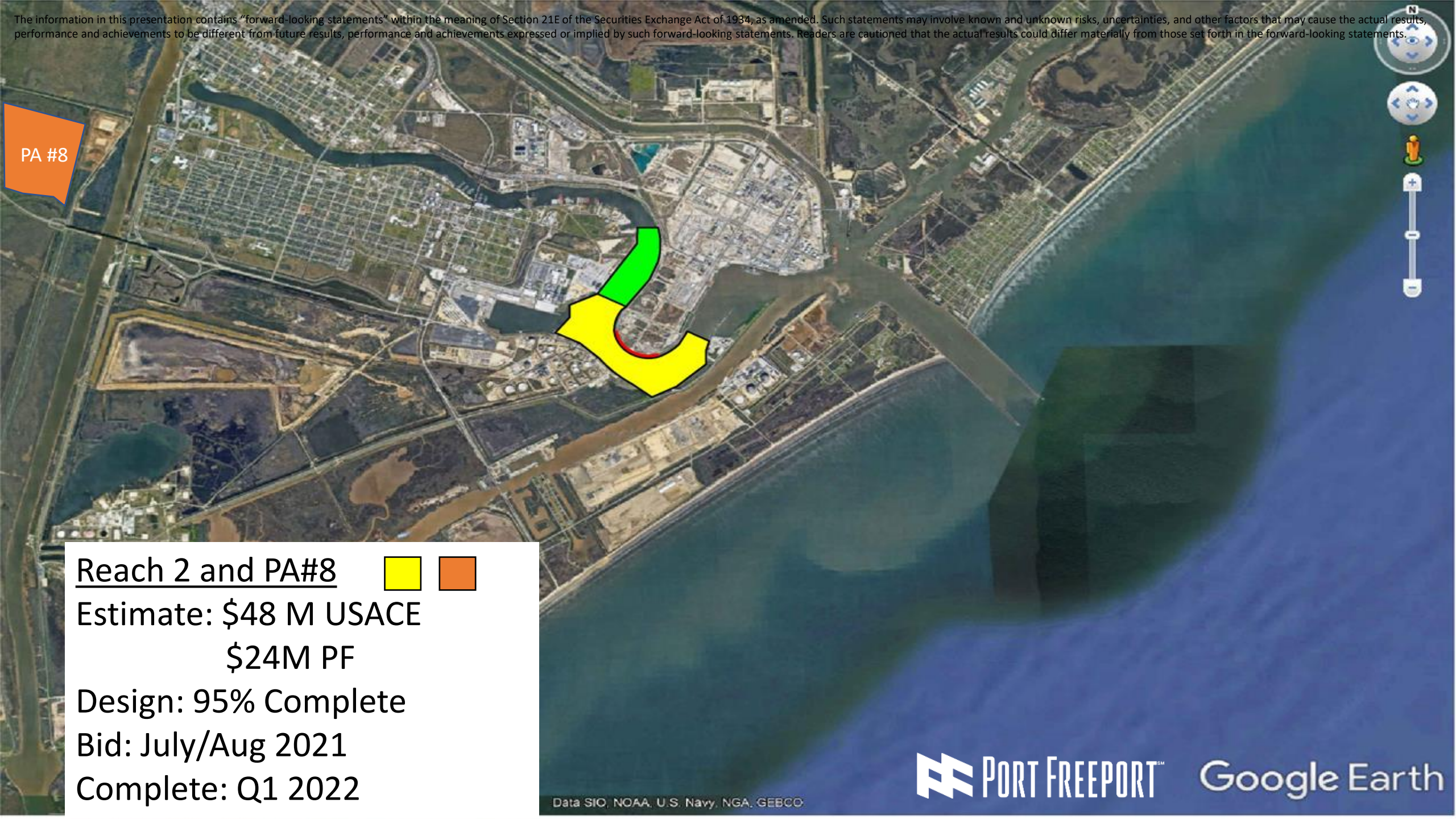
\$ 6 M PF

Bid Award: Sept 2020

Dredging Began: April 2021

Complete: Summer 2021





PA #8

Reach 2 and PA#8



Estimate: \$48 M USACE

\$24M PF

Design: 95% Complete

Bid: July/Aug 2021

Complete: Q1 2022

Data SIO, NOAA, U.S. Navy, NGA, GEBCO

 PORT FREEPORT<sup>SM</sup>

Google Earth





# Levee Stability Wall Pile Installation Completed May 2021



Reach 1 & 4 PSA (WIK)



Estimate: \$7 M

Started: July 2020

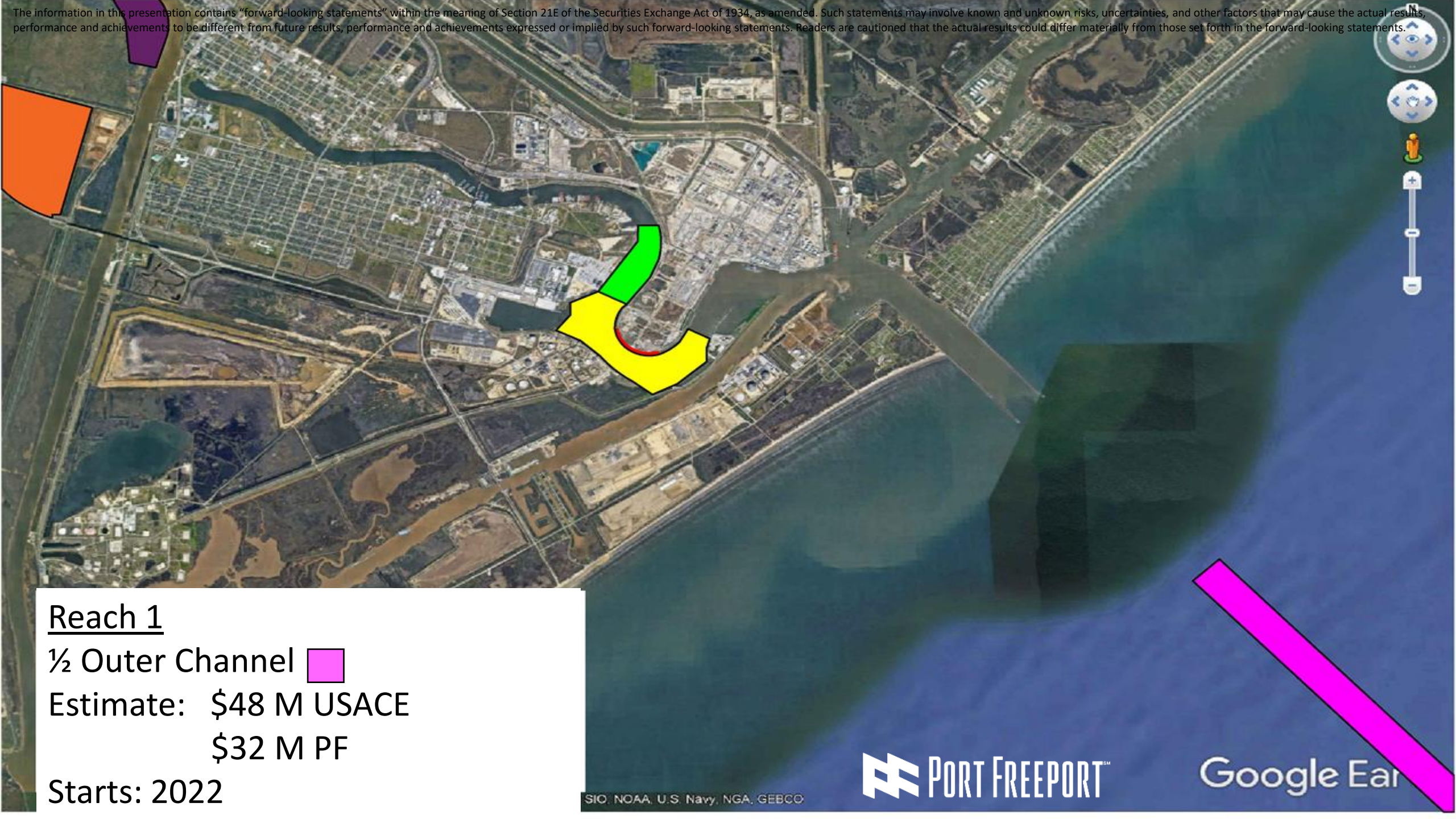
Complete: Dec 2021

Data SIO, NOAA, U.S. Navy, NGA, GEBCO

 PORT FREEPORT™

Google Earth





The information in this presentation contains "forward-looking statements" within the meaning of Section 21E of the Securities Exchange Act of 1934, as amended. Such statements may involve known and unknown risks, uncertainties, and other factors that may cause the actual results, performance and achievements to be different from future results, performance and achievements expressed or implied by such forward-looking statements. Readers are cautioned that the actual results could differ materially from those set forth in the forward-looking statements.

## Reach 1

½ Outer Channel 

Estimate: \$48 M USACE  
\$32 M PF

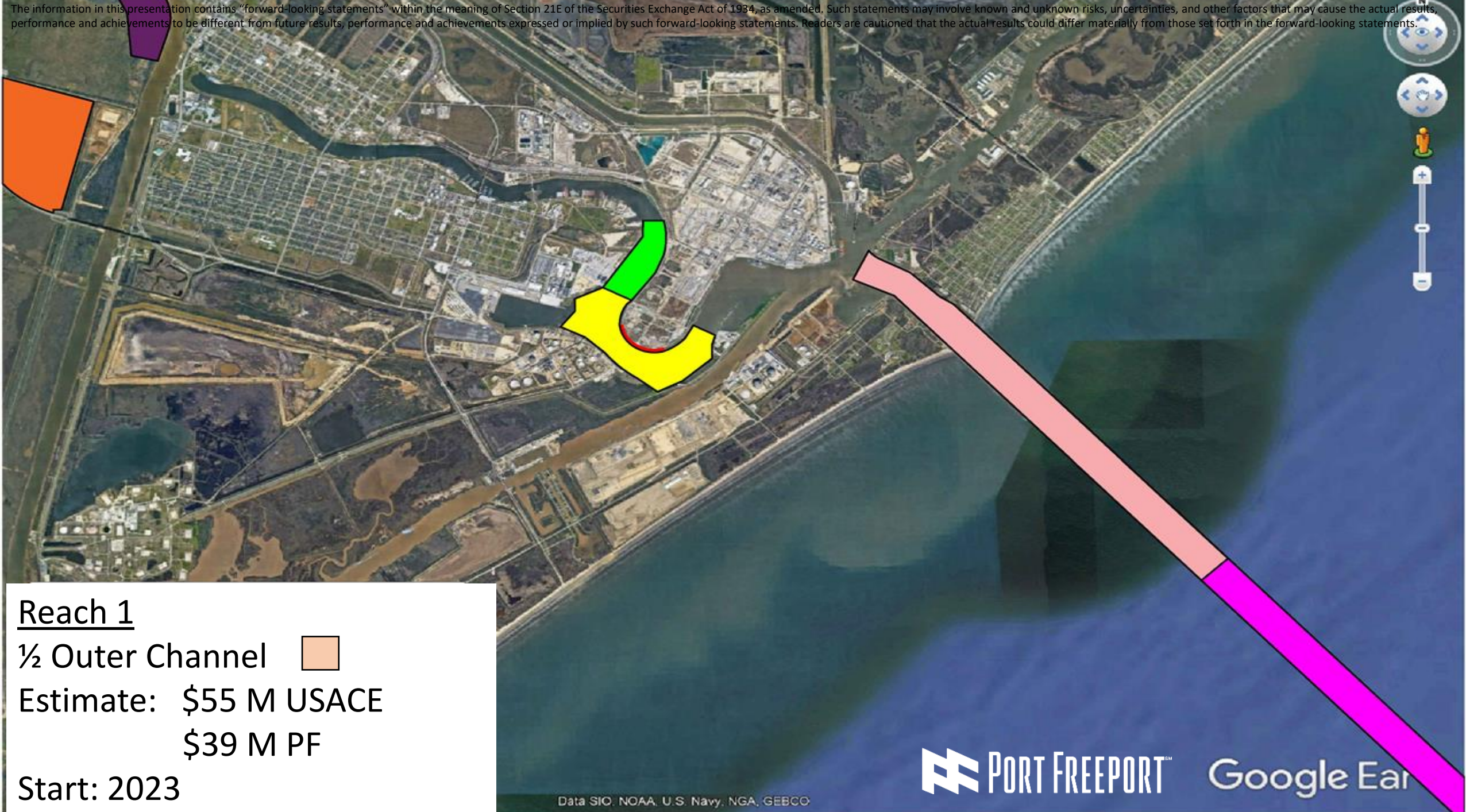
Starts: 2022

SIO, NOAA, U.S. Navy, NGA, GEBCO



Google Earth





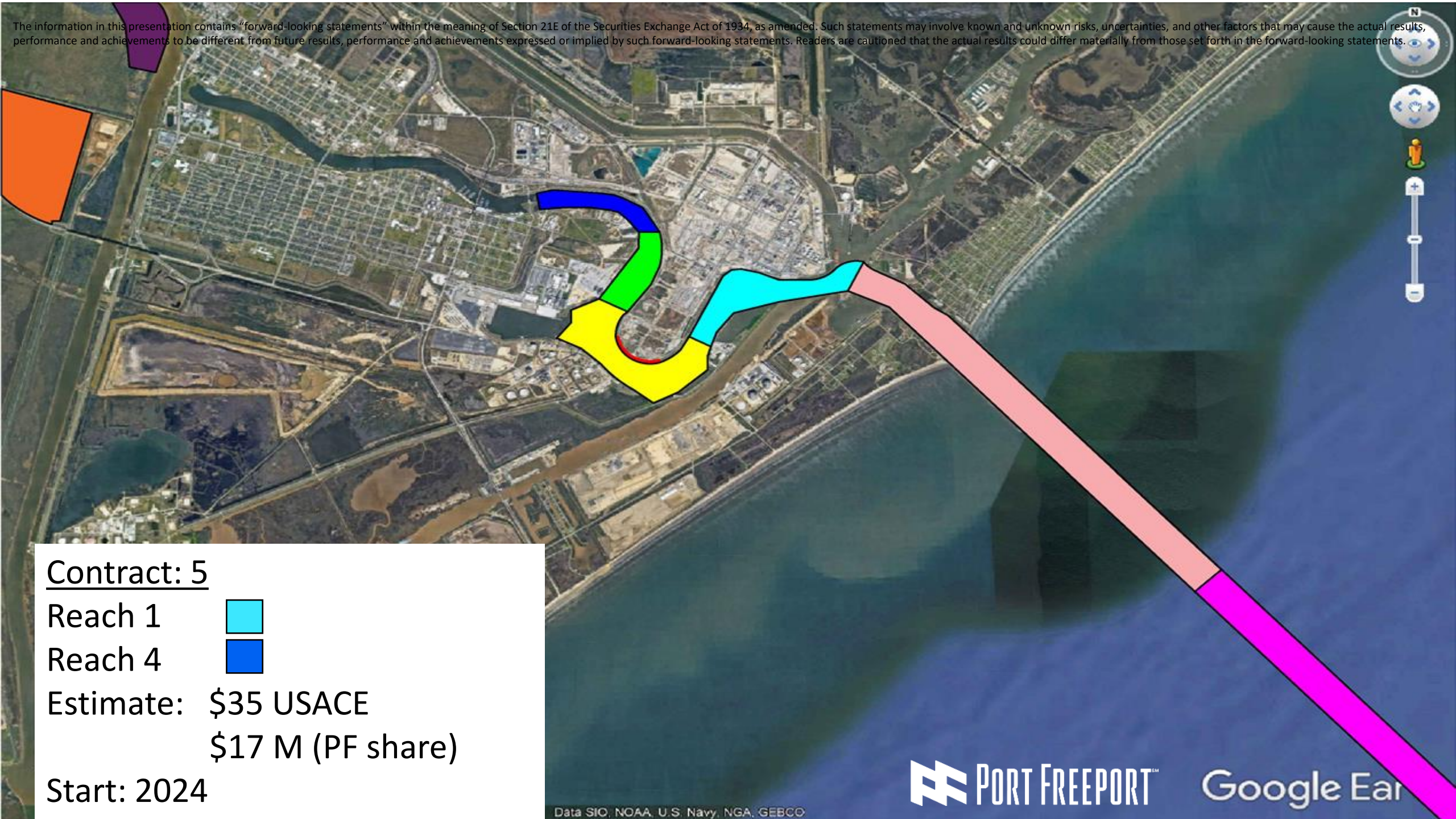
## Reach 1

1/2 Outer Channel

Estimate: \$55 M USACE  
\$39 M PF


Start: 2023





The information in this presentation contains "forward-looking statements" within the meaning of Section 21E of the Securities Exchange Act of 1934, as amended. Such statements may involve known and unknown risks, uncertainties, and other factors that may cause the actual results, performance and achievements to be different from future results, performance and achievements expressed or implied by such forward-looking statements. Readers are cautioned that the actual results could differ materially from those set forth in the forward-looking statements.

Contract: 5

Reach 1 

Reach 4 

Estimate: \$35 USACE  
\$17 M (PF share)

Start: 2024



# Velasco Terminal Expansion



**Full Buildout Lift Capacity: 1,500,000 Lifts**

## Phase 1 (Current)

- ✓ 26 Paved Acres
- ✓ 2 STS ZPMC Post-Panamax Gantry Cranes
- ✓ 800' berth with 47' operational depth

## Phase 2

- ✓ Permit Application Received from USACE - September 2018
  - 930' Berth Extension and Dredging – 51' operational depth
  - December 2019 Contract Awarded
  - September 2022 Completion
- 6 acres Backland Stabilization
  - Completed May 2020
- STS Post-Panamax Gantry Cranes Installation – 2022



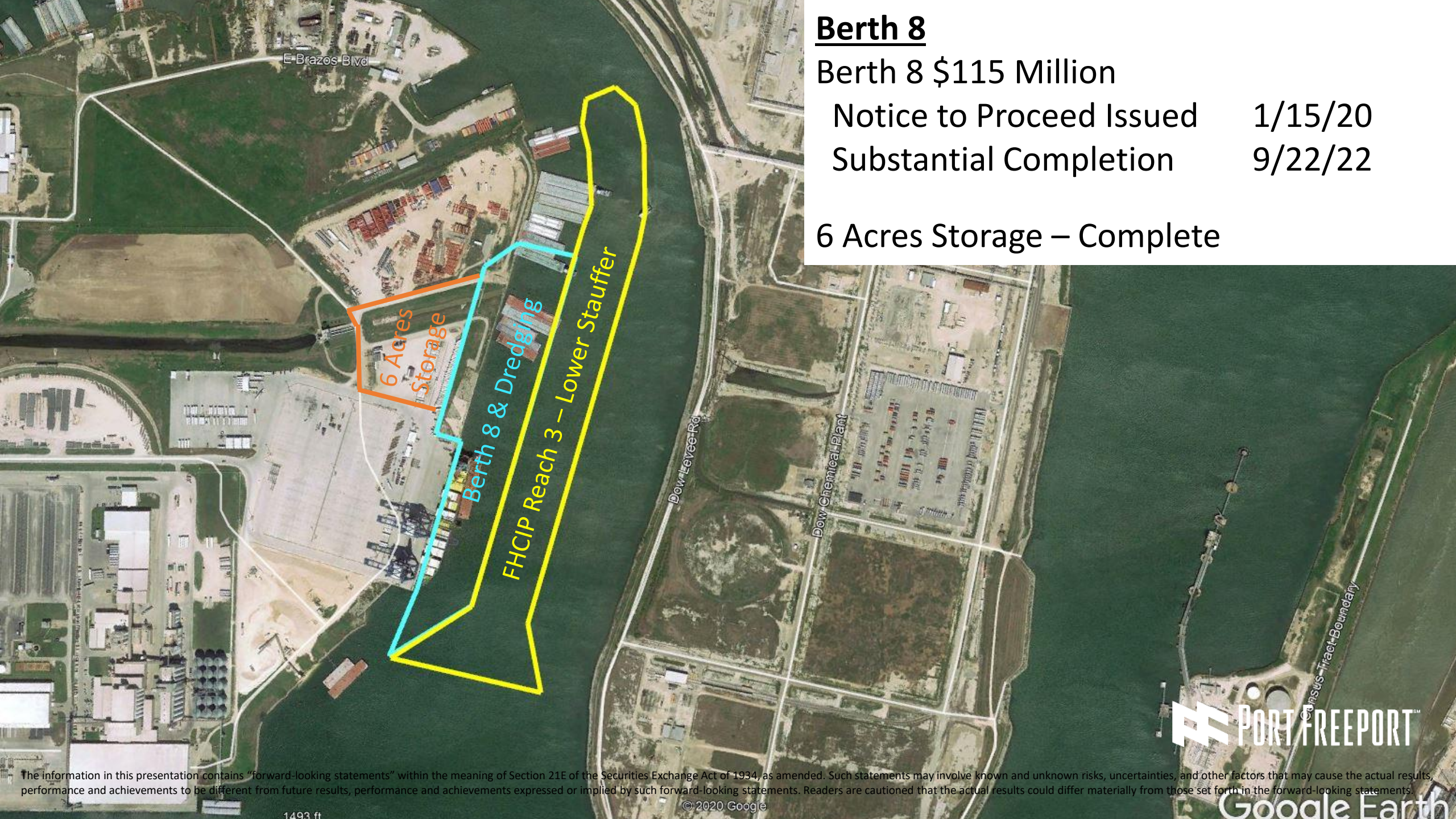
## Berth 8

Berth 8 \$115 Million

Notice to Proceed Issued 1/15/20

Substantial Completion 9/22/22

6 Acres Storage – Complete



The information in this presentation contains "forward-looking statements" within the meaning of Section 21E of the Securities Exchange Act of 1934, as amended. Such statements may involve known and unknown risks, uncertainties, and other factors that may cause the actual results, performance and achievements to be different from future results, performance and achievements expressed or implied by such forward-looking statements. Readers are cautioned that the actual results could differ materially from those set forth in the forward-looking statements.


© 2020 Google





Berth 8 Progress – July 2021





Berth 8  
927 ft. Length  
51 ft. Draft

This is an aerial photograph of a port construction site. A large, semi-transparent rectangular box is overlaid on the image, indicating the location and dimensions of Berth 8. The box is oriented diagonally, following the shoreline. To the left of the box, there is a paved area with several shipping containers and a small white vehicle. To the right of the box, there is a body of water with a large yellow crane on a barge. In the background, there are more port facilities, including cranes and buildings. The text 'Berth 8', '927 ft. Length', and '51 ft. Draft' is displayed in a white box with a black border, pointing to the highlighted area.



# Parcel 14 OEM Storage & Processing



Approximately 20 acres  
4,000 Vehicle Unit Spaces



# Parcel 14 OEM Storage & Processing

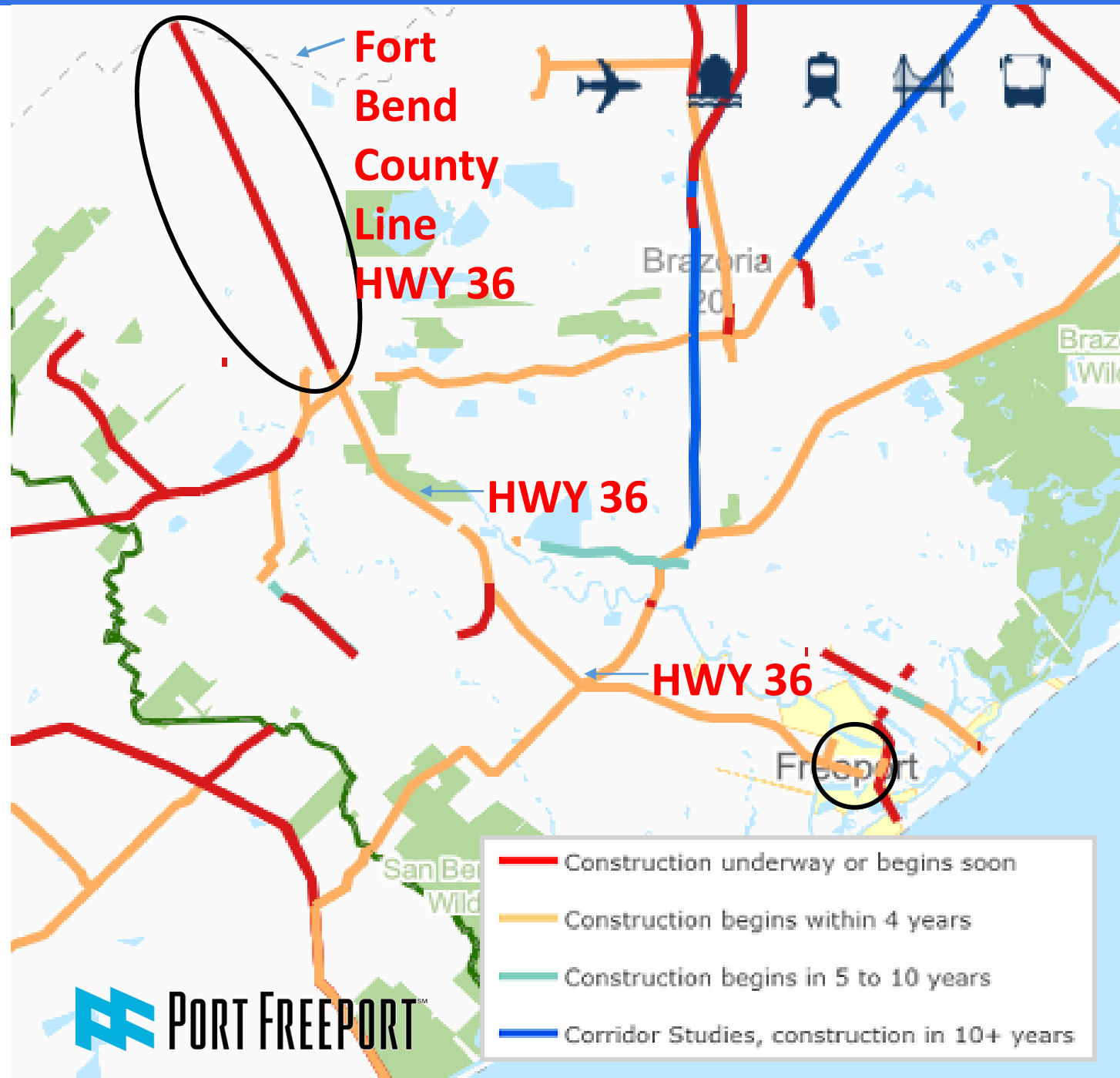


Approximately 20 acres  
4,000 Vehicle Unit Spaces  
Total Spaces at Port: 10,000



# HWY 36 Expansion

- Map depicts construction from Port Freeport to Fort Bend County line
- Port Freeport received TxDOT Port Access Improvement Program grant funds for its “first mile/last mile” project
- Texas Ports are only as successful as our inland infrastructure







**PORT FREEPORT<sup>SM</sup>**

**[www.portfreeport.com](http://www.portfreeport.com)**

**[www.portfreeportbondelection.com](http://www.portfreeportbondelection.com)**

**(979) 233-2667**

